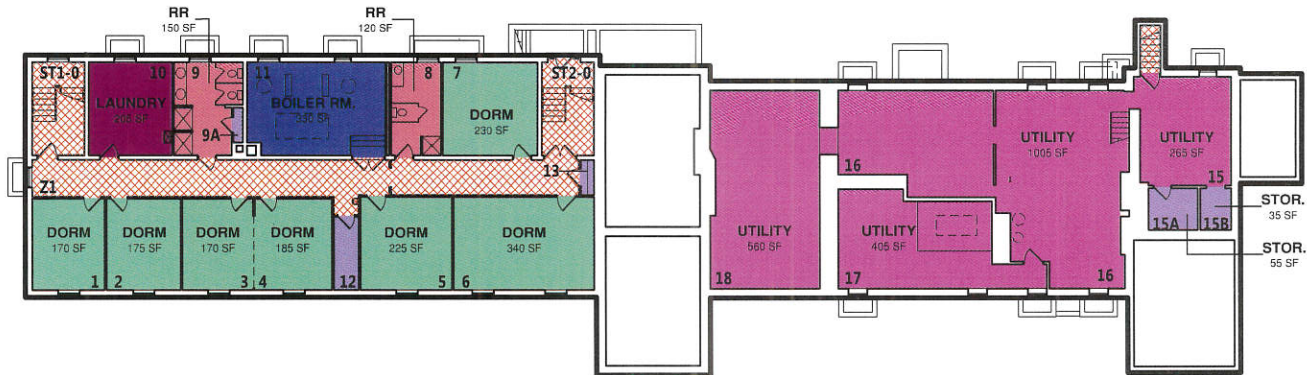


LEGEND

- STUDENT ROOM NO TLT/BATH
- CENTRAL STORAGE
- PUBLIC RESTROOM W/ SHOWERS
- LAUNDRY FACILITY
- CENTRAL UTILITY ROOM
- UTILITY/MECHANICAL SPACE
- PUBLIC CORRIDOR
- STAIRWAY



EXISTING BLDG. AREA	
LEVEL	AREA
000 BASEMENT	8,023 SF
100 LEVEL	9,242 SF
200 LEVEL	7,210 SF
24,475 SF	
PROGRAM AREA (BY FLOOR)	
LEVEL	AREA
100 LEVEL	20 SF
20 SF	
ASSIGNABLE	
000 BASEMENT	1655 SF
100 LEVEL	5690 SF
200 LEVEL	4050 SF
11395 SF	
UNASSIGNABLE	
000 BASEMENT	3855 SF
100 LEVEL	2070 SF
200 LEVEL	1915 SF
7840 SF	
19255 SF	



NORTH

Scale: 1" = 30'-0"

Date: SEPTEMBER 17, 2013

EASTERN UNIVERSITY ST. DAVIDS, PA



DALEY+JALBOOT
Architects LLP

GUFFIN HALL

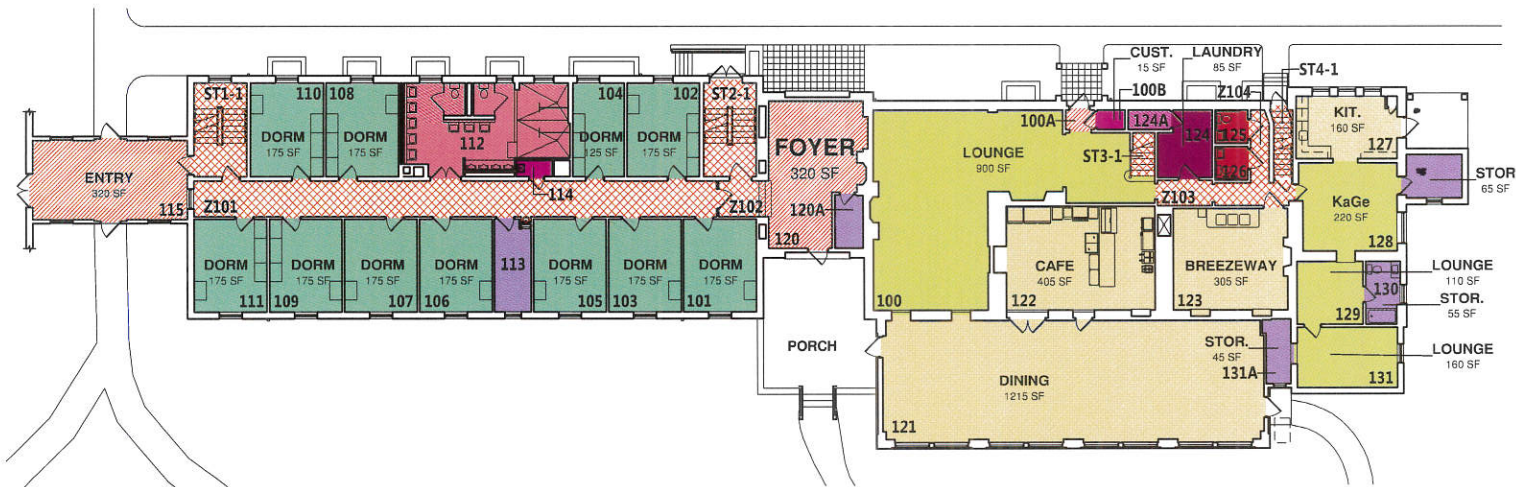
100 LEVEL - USE BY ROOM TYPE

LEGEND

- LOUNGE
- FOOD FACILITIES
- STUDENT ROOM NO TLT/BATH
- CENTRAL STORAGE
- PUBLIC RESTROOM
- PUBLIC RESTROOM W/ SHOWERS
- LAUNDRY FACILITY
- CUSTODIAL ROOM
- UTILITY/MECHANICAL SPACE
- LOBBY
- PUBLIC CORRIDOR
- STAIRWAY

EXISTING BLDG. AREA	
LEVEL	AREA
000 BASEMENT	8,023 SF
100 LEVEL	9,242 SF
200 LEVEL	7,210 SF
	24,475 SF

PROGRAM AREA (BY FLOOR)	
LEVEL	AREA
100 LEVEL	20 SF
	20 SF
ASSIGNABLE	
000 BASEMENT	1655 SF
100 LEVEL	5690 SF
200 LEVEL	4050 SF
	11395 SF
UNASSIGNABLE	
000 BASEMENT	3855 SF
100 LEVEL	2070 SF
200 LEVEL	1915 SF
	7840 SF
	19255 SF



NORTH

Scale: 1" = 30'-0"

Date: AUGUST 8, 2013

EASTERN UNIVERSITY ST. DAVIDS, PA



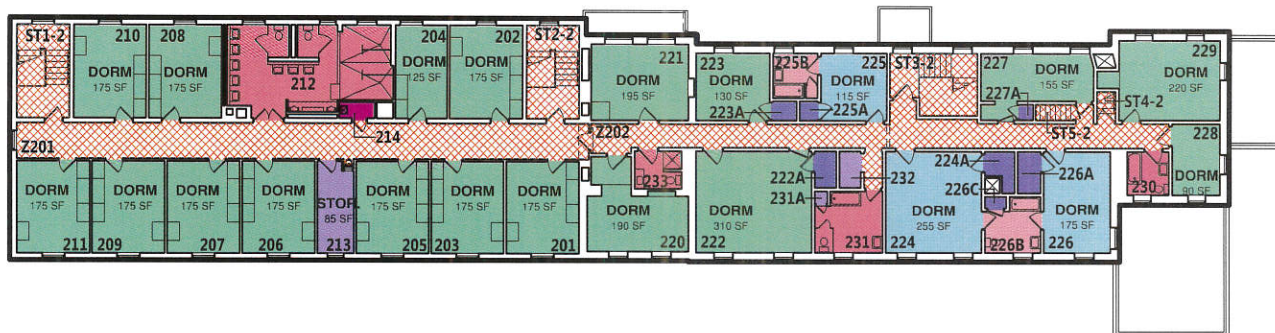
DALEY+JALBOOT
Architects LLP

LEGEND

- STUDENT ROOM NO TLT/BATH
- STUDENT ROOM BATH
- CUSTODIAL ROOM
- STUDENT ROOM WITH TLT/BATH
- CENTRAL STORAGE
- PUBLIC CORRIDOR
- STUDENT ROOM STORAGE
- PUBLIC RESTROOM W/ SHOWERS
- STAIRWAY

EXISTING BLDG. AREA	
LEVEL	AREA
000 BASEMENT	8,023 SF
100 LEVEL	9,242 SF
200 LEVEL	7,210 SF
	24,475 SF

PROGRAM AREA (BY FLOOR)	
LEVEL	AREA
100 LEVEL	20 SF
	20 SF
ASSIGNABLE	
000 BASEMENT	1655 SF
100 LEVEL	5690 SF
200 LEVEL	4050 SF
	11395 SF
UNASSIGNABLE	
000 BASEMENT	3855 SF
100 LEVEL	2070 SF
200 LEVEL	1915 SF
	7840 SF
	19255 SF



NORTH

Scale: 1" = 30'-0"

Date: AUGUST 8, 2013

EASTERN UNIVERSITY ST. DAVIDS, PA



DALEY+JALBOOT
Architects LLP