

GALLUP HALL

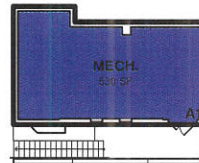
BASEMENT - USE BY ROOM TYPE

| EXISTING BLDG. AREA | | |
|---------------------|--------------|-----------|
| BLDG. | LEVEL | AREA |
| A | 000 BASEMENT | 628 SF |
| | 100 LEVEL | 2,280 SF |
| | 200 LEVEL | 2,399 SF |
| | 300 LEVEL | 2,399 SF |
| | | 7,706 SF |
| B | 100 LEVEL | 1,978 SF |
| | 200 LEVEL | 2,399 SF |
| | 300 LEVEL | 2,399 SF |
| | | 6,776 SF |
| C | 100 LEVEL | 1,978 SF |
| | 200 LEVEL | 2,399 SF |
| | 300 LEVEL | 2,399 SF |
| | | 6,776 SF |
| D | 100 LEVEL | 1,953 SF |
| | 200 LEVEL | 2,399 SF |
| | 300 LEVEL | 2,399 SF |
| | | 6,751 SF |
| | | 28,009 SF |

| TOTAL PROGRAM AREA (BY FLOOR) | |
|-------------------------------|---------|
| LEVEL | AREA |
| ASSIGNABLE | |
| 100 LEVEL | 5790 SF |
| 200 LEVEL | 6405 SF |
| 300 LEVEL | 6785 SF |
| 18980 SF | |
| UNASSIGNABLE | |
| 000 BASEMENT | 530 SF |
| 100 LEVEL | 1130 SF |
| 200 LEVEL | 1785 SF |
| 300 LEVEL | 1555 SF |
| 4995 SF | |
| 23975 SF | |

LEGEND

 CENTRAL UTILITY ROOM



BLDG. 'A'



NORTH

Scale: 1/32" = 1'-0"

Date: OCTOBER 29, 2013

EASTERN UNIVERSITY ST. DAVIDS, PA



DALEY · JALBOOT
Architects LLP

GALLUP HALL

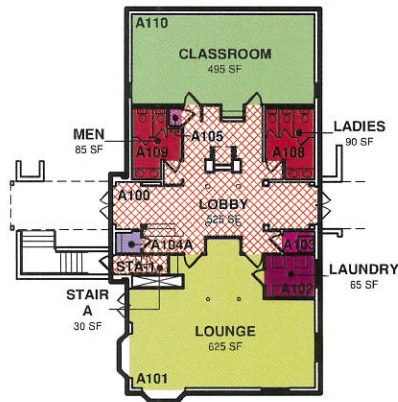
100 LEVEL - USE BY ROOM TYPE

| EXISTING BLDG. AREA | | |
|---------------------|--------------|-----------|
| BLDG. | LEVEL | AREA |
| A | 000 BASEMENT | 628 SF |
| A | 100 LEVEL | 2,280 SF |
| A | 200 LEVEL | 2,399 SF |
| A | 300 LEVEL | 2,399 SF |
| | | 7,706 SF |
| B | 100 LEVEL | 1,978 SF |
| B | 200 LEVEL | 2,399 SF |
| B | 300 LEVEL | 2,399 SF |
| | | 6,776 SF |
| C | 100 LEVEL | 1,978 SF |
| C | 200 LEVEL | 2,399 SF |
| C | 300 LEVEL | 2,399 SF |
| | | 6,776 SF |
| D | 100 LEVEL | 1,953 SF |
| D | 200 LEVEL | 2,399 SF |
| D | 300 LEVEL | 2,399 SF |
| | | 6,751 SF |
| | | 28,009 SF |

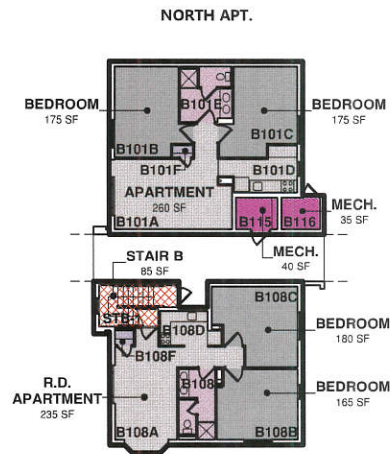
| TOTAL PROGRAM AREA (BY FLOOR) | |
|-------------------------------|---------|
| LEVEL | AREA |
| ASSIGNABLE | |
| 100 LEVEL | 5790 SF |
| 200 LEVEL | 6405 SF |
| 300 LEVEL | 6785 SF |
| 18980 SF | |
| UNASSIGNABLE | |
| 000 BASEMENT | 530 SF |
| 100 LEVEL | 1130 SF |
| 200 LEVEL | 1785 SF |
| 300 LEVEL | 1555 SF |
| 4995 SF | |
| 23975 SF | |

LEGEND

- CLASSROOM
- APARTMENT BEDROOM
- PUBLIC RESTROOM
- PUBLIC CORRIDOR
- LOUNGE
- APARTMENT BATH
- LAUNDRY FACILITY
- STAIRWAY
- CENTRAL STORAGE
- APARTMENT STORAGE/MECH
- CUSTODIAL ROOM
- UTILITY/MECHANICAL SPACE
- APARTMENT COMMON ROOM

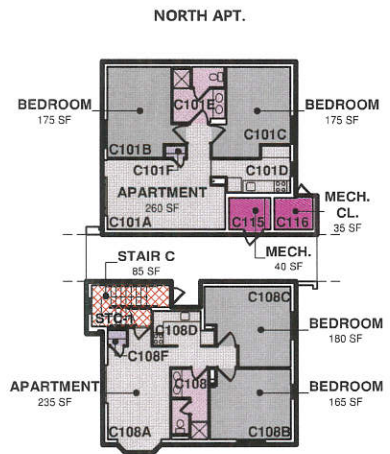


BLDG. A



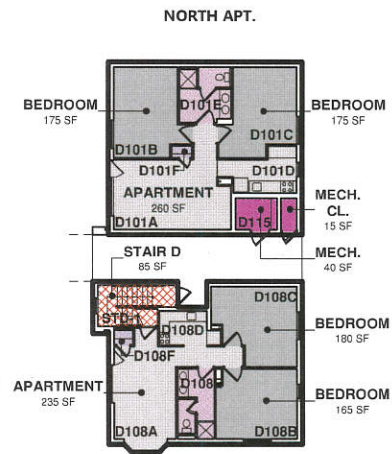
SOUTH APT.

BLDG. B



SOUTH APT.

BLDG. C



SOUTH APT.

BLDG. D



NORTH

Scale: 1/32" = 1'-0"

Date: OCTOBER 28, 2013

EASTERN UNIVERSITY ST. DAVIDS, PA



DALEY JALBOOT
Architects LLP

GALLUP HALL

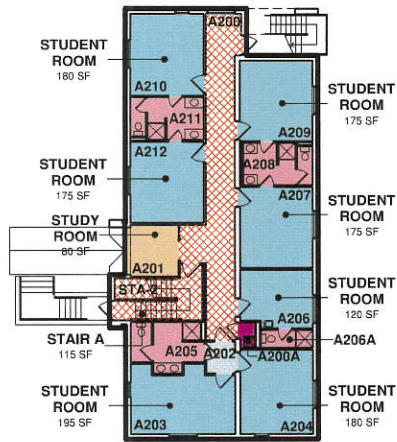
200 LEVEL - USE BY ROOM TYPE

| EXISTING BLDG. AREA | | |
|---------------------|--------------|-----------|
| BLDG. | LEVEL | AREA |
| A | 000 BASEMENT | 628 SF |
| A | 100 LEVEL | 2,280 SF |
| A | 200 LEVEL | 2,399 SF |
| A | 300 LEVEL | 2,399 SF |
| | | 7,706 SF |
| B | 100 LEVEL | 1,978 SF |
| B | 200 LEVEL | 2,399 SF |
| B | 300 LEVEL | 2,399 SF |
| | | 6,776 SF |
| C | 100 LEVEL | 1,978 SF |
| C | 200 LEVEL | 2,399 SF |
| C | 300 LEVEL | 2,399 SF |
| | | 6,776 SF |
| D | 100 LEVEL | 1,953 SF |
| D | 200 LEVEL | 2,399 SF |
| D | 300 LEVEL | 2,399 SF |
| | | 6,751 SF |
| | | 28,009 SF |

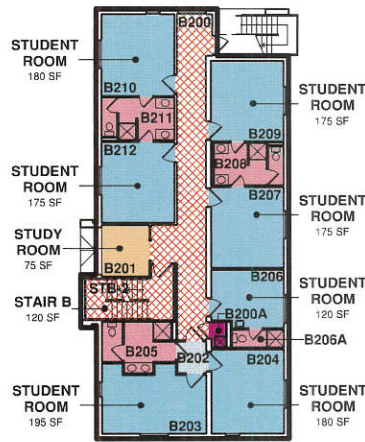
| TOTAL PROGRAM AREA (BY FLOOR) | |
|-------------------------------|---------|
| LEVEL | AREA |
| ASSIGNABLE | |
| 100 LEVEL | 5790 SF |
| 200 LEVEL | 6405 SF |
| 300 LEVEL | 6785 SF |
| 18980 SF | |
| UNASSIGNABLE | |
| 000 BASEMENT | 530 SF |
| 100 LEVEL | 1130 SF |
| 200 LEVEL | 1785 SF |
| 300 LEVEL | 1555 SF |
| 4995 SF | |
| 23975 SF | |

LEGEND

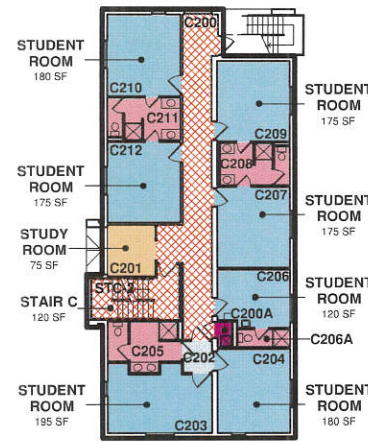
- STUDY ROOM
- STUDENT ROOM BATH
- CUSTODIAL ROOM
- STUDENT ROOM WITH BATH
- STUDENT ROOM SHARED SPACE
- PUBLIC CORRIDOR
- STAIRWAY



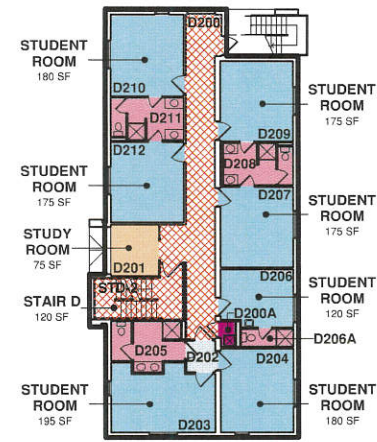
BLDG. A



BLDG. B



BLDG. C



BLDG. D



NORTH

Scale: 1/32" = 1'-0"

Date: OCTOBER 28, 2013

EASTERN UNIVERSITY ST. DAVIDS, PA



DALEY · JALBOOT
Architects LLP

GALLUP HALL

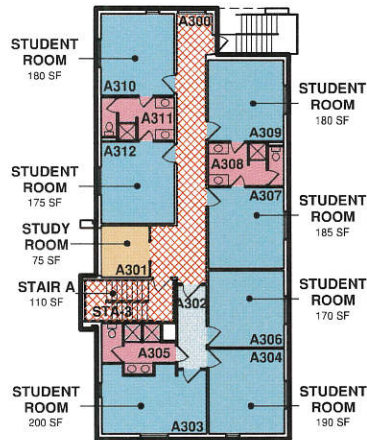
300 LEVEL - USE BY ROOM TYPE

| EXISTING BLDG. AREA | | |
|---------------------|--------------|-----------|
| BLDG. | LEVEL | AREA |
| A | 000 BASEMENT | 628 SF |
| A | 100 LEVEL | 2,280 SF |
| A | 200 LEVEL | 2,399 SF |
| A | 300 LEVEL | 2,399 SF |
| | | 7,706 SF |
| B | 100 LEVEL | 1,978 SF |
| B | 200 LEVEL | 2,399 SF |
| B | 300 LEVEL | 2,399 SF |
| | | 6,776 SF |
| C | 100 LEVEL | 1,978 SF |
| C | 200 LEVEL | 2,399 SF |
| C | 300 LEVEL | 2,399 SF |
| | | 6,776 SF |
| D | 100 LEVEL | 1,953 SF |
| D | 200 LEVEL | 2,399 SF |
| D | 300 LEVEL | 2,399 SF |
| | | 6,751 SF |
| | | 28,009 SF |

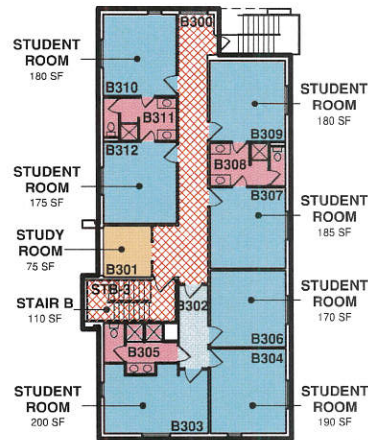
| TOTAL PROGRAM AREA (BY FLOOR) | |
|-------------------------------|---------|
| LEVEL | AREA |
| ASSIGNABLE | |
| 100 LEVEL | 5790 SF |
| 200 LEVEL | 6405 SF |
| 300 LEVEL | 6785 SF |
| 18980 SF | |
| UNASSIGNABLE | |
| 000 BASEMENT | 530 SF |
| 100 LEVEL | 1130 SF |
| 200 LEVEL | 1785 SF |
| 300 LEVEL | 1555 SF |
| 4995 SF | |
| 23975 SF | |

LEGEND

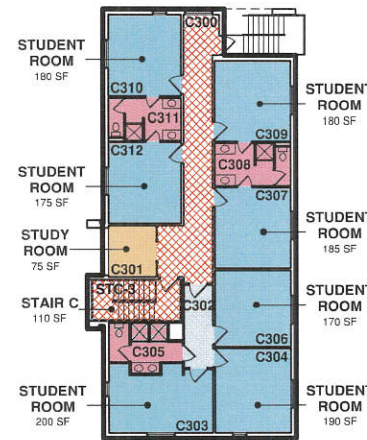
- STUDY ROOM
- STUDENT ROOM BATH
- PUBLIC CORRIDOR
- STUDENT ROOM WITH BATH
- STUDENT ROOM SHARED SPACE
- STAIRWAY



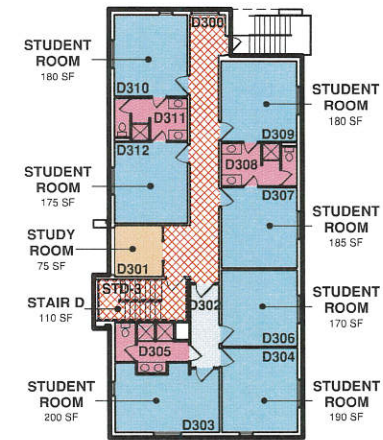
BLDG. A



BLDG. B



BLDG. C



BLDG. D



NORTH

Scale: 1/32" = 1'-0"

Date: OCTOBER 29, 2013

EASTERN UNIVERSITY ST. DAVIDS, PA



DALEY JALBOOT
Architects LLP