

EASTERN UNIVERSITY

LOEB SCHOOL OF EDUCATION

Inside this issue:

From the Founding Dean.....	1
Inclement Weather.....	1
Student Teaching.....	2
Registration/Advisement.....	2
Christian Churches Together.....	3
School Health Services.....	3
Professional News.....	4-6
5-Year Program.....	7
Curriculum Lab.....	7
PRAXIS PPST.....	7
E-Net.....	8-9
Important Dates.....	10

WHAT'S NEW?

SPRING

From the Founding Dean...

I can't believe that January is half over already! Hope your classes are going well. The Loeb School of Education is getting closer to having final programs of study for the new PDE certificates: Early Childhood (Pre K-4), Middle level (4-8), and Special Education (N-8) and (7-12). The programs should be completed by the end of February and ready to be approved by the appropriate university committees and submitted to PDE. They will begin to be implemented next year for incoming first year traditional undergraduate students. All students who will be applying for certification after Jan. 1, 2013 must be taking the new certificate programs. There will be no more Elementary Education certifications issued by PDE after that date. All Special Education candidates must be certified in either Early Childhood, Middle level or Secondary Education as well. We will keep you informed as the programs move forward.



Helen W. Loeb
Founding Dean

INCLEMENT WEATHER REMINDER

Every year at this time the potential exists for an unscheduled weather related school closure. School closing information is available as a Quick Link on the homepage of the EU website, www.eastern.edu. News radio KYW 1060 AM is EU's official snow closing station. There are various snow closure identification numbers. EU St. Davids campus day classes is #496; EU St. Davids campus night classes is #2496; CCGPS at all other Delaware County locations is #1207; CCGPS-Philadelphia is #1045. EU/CCGPS in Central PA should look for radio announcements listed alphabetically on WARM 103 FM.

Please understand that closure decisions are usually made by region. For up-to-date information about a specific location, students are encouraged to call the CCGPS Message/Bulletin Board at 1-800-732-7669, ext. 2834. Members from the CCGPS Scheduling/Facilities and Student Services teams will notify instructors and group representatives both when a closure is announced and when classes are re-scheduled. Students are then informed of make-up arrangements through the instructor and group reps. These inclement weather procedures are covered in the Student Services section of the CCGPS Catalog.

STUDENT TEACHING

**If you want to student teach in SPRING 2010,
contact Melanie Tabakin (mtabakin@eastern.edu)
immediately to receive an application and further instructions!
The deadline to apply is April 15, 2009.**

Student teaching is required for Pennsylvania teaching (Instructional I) certification. Students may fulfill this requirement either at the undergraduate or the graduate level by concurrently enrolling and successfully completing course requirements in Student Teaching (EDU610 for graduates and EDU410 for undergraduates) and Practicum (EDU620 for graduates and EDU420 for undergraduates). Student Teaching and Practicum, combined, make up a full-semester load (15 credits for undergraduates & 9 credits for graduates) and are expected to devote a full-length semester (14 weeks) to this professional hands-on experience.

Before being allowed to do student teaching, students should fulfill the following requirements:

1. Be accepted into the Certification Track (undergraduate) and the Certification Program (graduate).
2. Complete all certification course requirements.
3. Maintain the GPA of 3.0.
4. Successfully complete PRAXIS I and II tests.
5. Make a formal application for student teaching **at least one FULL semester prior to the professional semester** of student teaching. The application should include the following:
 - A completed application form for student teaching (download the form for undergraduates or for graduates) Listing three faculty members whom we will contact for recommendations.
 - For Special Education:** documentation of classroom observation and interaction with exceptionalities they will be certified to teach.
 - Approval of the Dean of Students (undergraduates)
 - Evidence of a satisfactory health record, including TB clearance
 - Evaluation form and written summary of the Field Experience (undergraduates)
 - Student's university transcript with the cumulative GPA of 3.0
 - Copies of the F. B. I., State Police and Child Abuse clearances (forms are in the Curriculum Lab)
 - Evidence of passing PRAXIS I and II in the your certification area(s)
 - Autobiography and Philosophy of Education (instructions are available in the Curriculum Lab)

**Interested in fulfilling a portion of student teaching overseas?
Contact Dr. David Greenhalgh at dgreenha@eastern.edu.**

REGISTRATION AND ADVISEMENT FOR SUMMER I, II, and FALL

Advisement will be the week prior to the summer/fall semester online registration opening. (Registration for traditional undergraduate students will open late March; registration for graduate students will open a week later.) You may sign up in the Curriculum Lab to meet with your advisor when the schedule is posted.

SCHOOL HEALTH PROGRAM UPDATES

School Nurse Certification Masters of Education in School Health School Health Supervisor Certification

Eastern University offers a 12-credit School Nurse Certification delivered in an online hybrid format, involving a combination of on-site sessions and distance learning. If you are currently practicing as a Certified School Nurse and want to obtain a master's degree or Act 48 credit you may want to consider the School Health Supervisor Certification program. This program is offered to Certified School Nurses in Pennsylvania who wish to pursue certification in educational leadership from the Department of Education. The certification as a Supervisor in School Health Services is offered as an 18-credit program that prepares the student for the Supervisory Praxis exam.

The 12 credits for the School Nurse Certification or the 18 credits in the Supervisor Certification program can be credited towards the 30 credit Masters in Education in School Health. The Master of Education in School Health is beginning to offer classes in the online forum. Three new online courses are now offered in the Master of Education in School Health: Curriculum Development in Health Education, World Health Issues, and Community and Environmental Health.

For information regarding any of these programs please contact Susan Seltzer, Director of School Health Programs at Eastern University: 610-341-1717 or sseltzer@eastern.edu.

CHRISTIAN CHURCHES TOGETHER

Helen Loeb and Harry Gutelius Present at CCT

The annual meeting of the Christian Churches Together (CCT) in the USA was held at The Conference Center of the Maritime Institute in Baltimore, MD from January 13-16. Present at the meeting were clergy of all Christian faiths from coast to coast, and the topic around which the gathering was held is reducing poverty in America. Specifically, the goal of CCT is for America to experience a 50% reduction of people living in poverty within 10 years.

One of the leaders of this organization is Ron Sider, a distinguished teacher and author at the Palmer Seminary. When CCT decided it need one or two educators to lead the sessions on the role education can play in reducing poverty, Dr. Sider suggested Eastern's Dean, Helen Loeb, and its Associate Dean, Harry Gutelius.

Helen and Harry presented a power point presentation and then led their group of clergy in extended discussions. The result was the creation of both a set of general principles as well as a set of specific recommendations based on those principles. These items were taken from the education track that met to the general body of CCT for approval on Wednesday, January 14.

The next day, January 15, all the members from CCT went to Washington DC to present the organization's poverty reduction plan to members of the Senate, to members of the Obama transition team, and to a meeting of the press corps. A significant portion of that plan was the education points that had been adopted the night before.

The Loeb School of Education is very proud of the fact that leadership from our school was able to play a significant role in such a worthwhile endeavor, one that combined improvement of education in our country with Christian values and principles. It is our prayer that the work done by CCT in January as well as its endeavors in the months and years ahead will bear fruit toward its attempt to help reduce poverty in America.

RECRUITMENT EVENTS FOR THE PHILADELPHIA SCHOOL DISTRICT

The events below are held at 440 N. Broad Street, Philadelphia, PA 19130

Roll Out the Red Carpet

Thursday, March 5, 2009
9AM to 2PM

All juniors, seniors and graduate students interested in learning more about teaching opportunities and seeing inside Philadelphia School District classrooms are encouraged to RSVP on the PSD website: phila.k12.pa.us (under Roll Out the Red Carpet, recruitment events – 2009).

Breakfast and lunch are provided, as well as transportation to schools from the school district administrative offices.

Site Selection Job Fairs

Come meet the principals in person!
March 21, April 18, June 20, July 11
10AM – 1PM

Greater Philadelphia Teacher Job Fair 2009

February 25th
PRE-REGISTER and buy tickets until February 9!

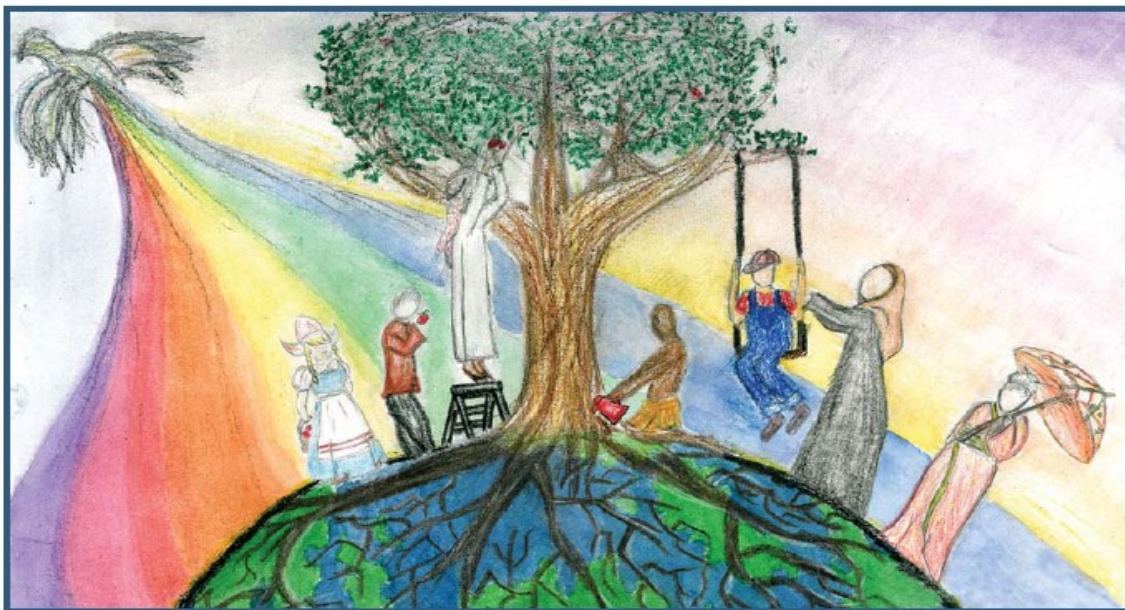
Only those who have pre-registered for the fair will gain admittance at 9AM. The cost before February 9 is \$5 per name badge. On the day of the fair, onsite registration will be \$10 for everyone who did not pre-register. Those purchasing badges on that day will be admitted at 10AM. See Jim Osborne in the Curriculum Lab if you would like to purchase a badge and get registration information.

Philadelphia Futures

Philadelphia Futures, a 20 year-old nonprofit mentoring organization, is in serious need of mentors, particularly males, for promising, economically disadvantaged urban high school students whose goal is to get a college education. Mentors are trained and supported by staff, matched with high school freshmen, and asked to expose students to new social, cultural and educational experiences. Mentors must be college graduates, see their students monthly, contact them weekly by phone or email, and provide emotional support and encouragement through their first year of college. In addition to one-on-one mentoring, Philadelphia Futures provides students with financial incentives, year-round after school classes to enhance academic skills, college guidance and cultural opportunities. To apply, complete the application on their website – www.philadelphiafutures.org or call 215-790-1666.

PROFESSIONAL NEWS (continued)

The Pennsylvania Department of Education, Penn State Harrisburg and the Center for Schools and Communities announce



Multiple Cultures, Multiple Voices: Expanding and Strengthening Practice, Policy and Partnerships

Mark your calendars now for the 2009 ESL Conference

June 14-16, 2009 • Hilton Harrisburg • Harrisburg, Pennsylvania

What will I learn?

This conference will offer research-based tools, strategies and resources to strengthen and support the academic and career success of English Language Learners (ELLs) through: educational preparation and instruction; laws, policies and regulations; workforce development; and community, advocacy and family partnerships.

- Learn about current trends, best practice strategies and cutting-edge research from regional, state, and national presenters that increase student performance and build accountability.
- Explore implications and effects of related laws, public policies and regulations guiding the education of our English Language Learners.
- Access materials, tools and resources that strengthen educational practice and professional development.
- Build effective networking connections and partnerships with educators, presenters, and researchers.

Who should attend?

EDUCATION

Educators (Content and ESL teachers), Guidance Counselors, Title III Program Managers, Intermediate Unit ESL Directors, Superintendents, Administrators, Pupil Personnel, School Board Members, Higher Education Researchers, Faculty and Administrators

GOVERNMENT

State Legislators, Local Government Officials and Policymakers, Workforce Development Administrators and Providers

COMMUNITY

ESL Parents and ESL Students, Community-Based Service Providers, Advocates and Faith-Based Leaders, Employers and the Media

Where do I find conference information?

To learn more about this exciting conference please visit the Center for Schools and Communities ESL Web Portal at www.eslportalpa.info or contact the Center for Schools and Communities at 717-763-1661.





ENGLISH LANGUAGE LEARNERS



Date Saver: DCIU ELL Program Presents:



Virginia Rojas **“Strategies for Success for English Language Learners”**

What are best practices for simultaneously increasing the English language proficiency and academic achievement of English learners?

How can ESL and mainstream teachers work together to make this happen?

Participants interactively answer these and other provocative questions. Specific outcomes include:

- an understanding of programs options and curricula models;
- how to use specific strategies to build background knowledge, scaffold meaning, extend language development, and affirm cultural identity; and
- how to use time-honored ESL strategies to develop language proficiency, literacy strategies (i.e. vocabulary, reading and writing) to increase academic language literacy skills, and instructional frameworks (i.e. assessment, differentiation, cooperative learning and co-teaching) to increase academic achievement.

WHERE: DCIU Morton, Room 171

WHEN: February 6, 2009

TIME: 8:30-3:30

Target Audience: ESL and Elementary Classroom Teachers,
Secondary Content Area Teachers, Guidance Counselors,
School Psychologists, and Administrators.

*Lunch will be provided.

*Act 48 hours will be awarded.

Session is **free** to participating DCIU Title III Consortium Districts: **Chichester, Interboro, Garnet Valley, Penn Delco, Ridley, Rose Tree Media, Southeast Delco, Springfield and Wallingford-Swarthmore School Districts**. All others: \$100.00—includes lunch and materials.

FINISHING UP YOUR BACHELOR'S DEGREE AND INTERESTED IN STUDENT TEACHING AT THE GRADUATE LEVEL?

Check out the BA-M. Ed. combined Five-Year program!

This 30-credit program is designed for Eastern undergraduate students

- who are enrolled in a teaching certification BA/BS program and wish to complete student teaching as graduate students while completing the M. Ed. in Multicultural Education program in their fifth year; or
- who are enrolled in a non-certification BA/BS program and wish to complete the M. Ed. in Multicultural Education program with ESL concentration in their fifth year.

You **MUST** submit a graduate application (go to www.eastern.edu) and complete the application process for admission to the graduate program. To be admitted into the program, you must pass PPST I tests in reading, writing, and mathematics and PPST II test(s) in your certification area, **and** complete undergraduate coursework in your major. EDU417 and Statistics are prerequisites to the program. If you have not completed EDU417 as undergraduates, you must complete EDU517 at the graduate level.

If you want more info about the Five-Year Program or other graduate programs at Eastern University, stop by the Eagle Learning Center (main campus) to talk with someone in Enrollment Management or email gpsadm@eastern.edu, or call 610-341-5862.

PRAXIS PPST UPDATE

PPST MATH AND WRITING REVIEWS 2009 SCHEDULE

REVIEW DATES

Math - Saturday, February 21, 2009 - 9 AM to 3 PM
Writing - Saturday, February 28, 2009 - 10 AM to 2 PM

Math - Saturday, April 4, 2009 - 9 AM to 3 PM
Writing - Saturday, April 18, 2009 - 10 AM to 2 PM

All reviews are held in the Curriculum Lab.
 Contact Jim Osborne at x5941 or josborne@eastern.edu
 if you are interested in attending a review or if you need more information.

CURRICULUM LAB

Plato software is available to practice and review for Praxis I Reading, Writing and Math. The Curriculum Lab has many resources available for study and review for Praxis I, and some materials available for study and review for Praxis II. There are also many resources (children's books, lesson plan materials, etc.) to check out. Inquire in the Curriculum Lab with any questions!

CURRICULUM LAB HOURS

**Monday through Thursday
9AM to 9PM
(closed 10-11AM on Wednesday)
Friday 9AM to 2PM
Saturday 10AM to 2PM**

DON'T BE LEFT OUT OF THE LOOP!

Make sure you have your **login name** and **password** to access your Eastern e-mail and student records.

From your E-Net account, you will be able to find a listing of your courses, grades, and program of study that you need to complete for your certification or degree. Your Eastern e-mail account will be the one that we utilize for communication with you; **check it regularly**. If you do not plan on checking your Eastern e-mail regularly, be sure to activate the forward feature.

HOW TO ACCESS EASTERN EMAIL

1. Go to Eastern University's homepage: www.eastern.edu.
2. Click on "E-Net" in the left side navigation column.
3. Click on "Webmail" on the E-Net Services page.
4. Refer to your Eastern University login/password letter and type in your username and password (the same used to access BlackBoard).

HOW TO FORWARD EASTERN EMAIL TO YOUR EMAIL ACCOUNT OF CHOICE

1. Access your Eastern email account using the directions listed above in steps 1-4.
2. Once you have entered your username and password, your inbox will appear.
3. Click on the "Vacation/Forwarding/Mail Filtering Rules" found in the top menu.
4. Click in the box labeled "Redirect All Mail To:" to check the box.
5. We recommend that you **not** click on the "Keep a Copy" option because your EU email inbox will get full and will not accept new emails at that time, preventing you from receiving important communication.

HAVE YOU LOST, FORGOTTEN, OR NEVER RECEIVED YOUR LOGIN NAME AND PASSWORD?

If you are a traditional undergraduate or graduate student, go to EU's homepage, go to Quick Links, click on Registrar, and about three-fourths of the way down, it will say **"Request for E-Net Name & Password."** Send this form electronically to get your information.

If you are an accelerated undergraduate student in the ACED program, please contact Student Services at 610-341-1397, 800-732-7669 ext. 1397, or gpsserve@eastern.edu, and this information will be sent to you.

TECHNICAL TIPS

Firewalls: Some email providers, particularly those of employers, have firewalls, which restrict forwarding capabilities. Please check with your provider to see if this is allowed. Most "personal" email providers (i.e. Gmail, Yahoo, Comcast, etc.) allow you to forward EU email to those accounts.

Deleting Messages: If you choose not to forward your EU email, be sure to **"Delete"** unnecessary emails and click **"Empty Trash"** to prevent your EU email account from getting full, which will block important emails from reaching you.

HOW TO USE E-NET SERVICES

1. Go to www.eastern.edu then click on “E-Net” in the left side navigation column and next click on “Faculty and Student Services” on the E-Net Services page. (The direct link to this page is: <https://genesis.eastern.edu/>)
2. Click on “Student Services.”
3. Enter your user name (login name) and password. You will then be taken to the Student Services menu.
4. At the bottom of the page you will find where you can change “Current Option Settings,” for the “Session,” “Year,” and “Program” so you can access current and past information by clicking on the “Set Options.”
5. When you click “Set Options,” you will need to select your Program (“Undergraduate” or “Graduate”). Session of interest (Semester-based programs: “Fall,” “Spring,” “Summer I,” or “Summer II.” Term-based programs: You will find your Term Code on your schedule, i.e. “September-January”) and year the session began.
6. To navigate through the Student Services menu, simply click on the button and the web page will open.

WHAT INFORMATION IS ON THE STUDENT SERVICES MENU?

Biographical – This provides you with the records that the school uses that contain your name, address, phone numbers, e-mail, academic advisor, major, anticipated date of graduation, test scores, housing information, along with a variety of other information about you.

Student Schedule – Use this tool to view your current schedule. Or you can also view your schedule from a previous semester/term or next semester/term, if already registered. To change semesters or terms, follow the instructions in 4 and 5 above.

Grades – This service allows you periods that are outlined in the Student Registration Material that is either campus mailed or sent to your home address. This option allows you to register in “real time.”

Academic Record – Use this tool to view all your grades and classes on one convenient screen.

Degree Audit – (Does not apply to FMBA, FHA, and FNP programs) This option is available to help students in the advising process by showing what courses are still needed for graduation. *Check this feature often!*

Course Catalog – Check here for the most updated course offerings and availability. You will need to set the “Current Option Settings” to the appropriate semester/term. Click on the department and course to see the current schedule and enrollment information.

Registration – (Semester-based programs only) This option is only available during registration periods that are outlined in the Student Registration Material that is either campus mailed or sent to your home address. This option allows you to register in “real time.”

GPA Projection – Use this tool to see how your grade point average would be affected by projecting grades for current courses. You will need to “Set Options” for your current semester or term.

Immunization Record – (Applies only to some students in full-time semester-based programs) View the immunization record that the health center has for you.

IMPORTANT DATES to REMEMBER...

2009

SPRING

January 12: Classes begin/last day to register
 January 19: Martin Luther King Holiday observed—no classes
 January 20: Last day to make schedule changes (Drop/Add)
 February 9-13: Spiritual Emphasis week
 February 28-March 8: Mid-semester vacation
 March 18: Mid-semester warnings issued to undergraduates
 Late March: Registration for Summer and Fall 2009 begins online
 (Seek advisement from your advisor the week prior to open registration)
 April 10-13: Easter Break
 April 15: Deadline to apply for Student Teaching for SPRING 2010
 April 27: Classes end
 April 28: Study Day
 April 29-May 5: Final examinations
 May 8: Baccalaureate
 May 9: Commencement ceremonies

SUMMER I (Optional Session)

- Classes Begin -- Wednesday May 13
- Memorial Day Holiday -- Monday May 25
- Classes End/Final Examinations -- Tuesday, Wednesday June 23, 24

SUMMER II (Optional Session)

- Classes Begin -- Monday June 29
- Independence Day Holiday --Friday, July 3
- Classes End/Final Examinations -- Wednesday, Thursday August 5, 6

NOTE: Accelerated programs offered in the Campolo College of Graduate and Professional Studies follow rolling calendars individualized for each cohort of students.



Would you like to contribute news for the fall newsletter?
 Please send your information to mtabakin@eastern.edu
 by September 1, 2009. Thank you!