

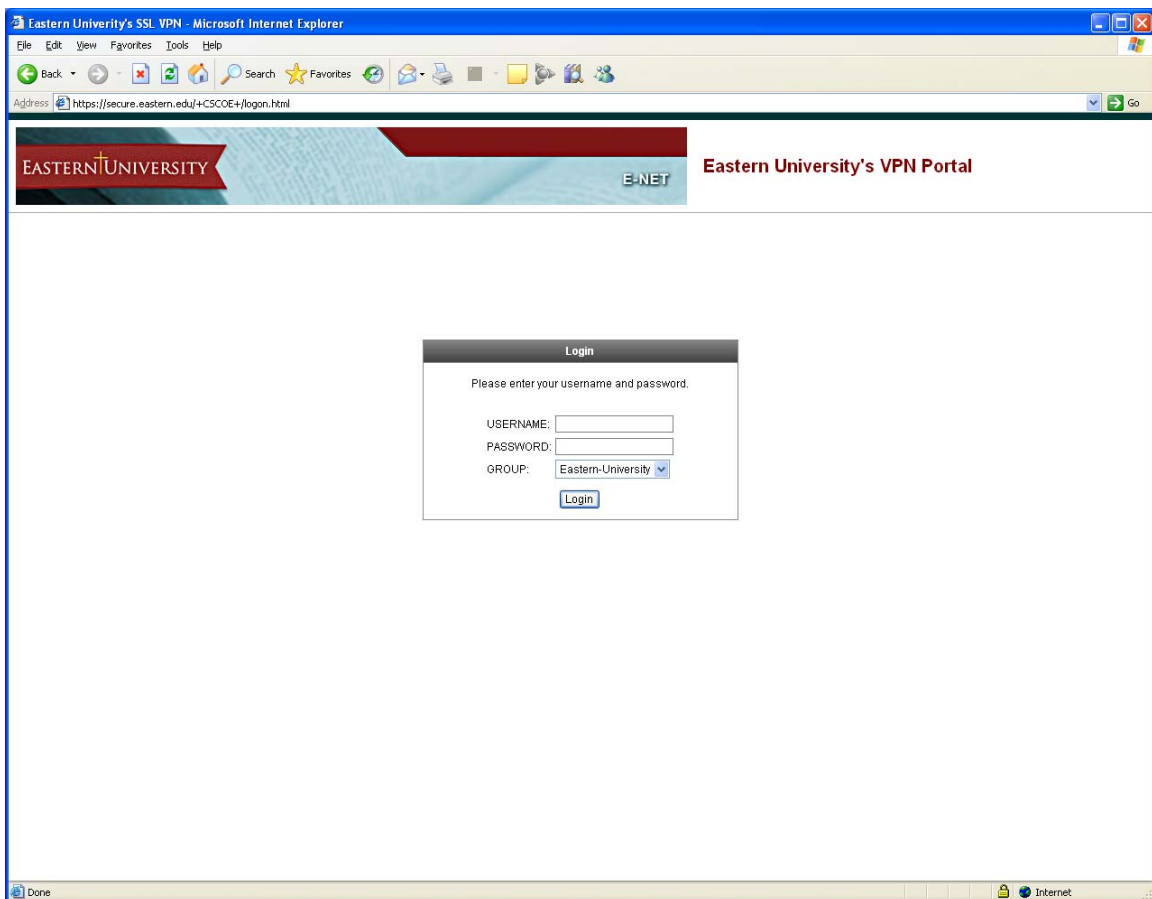
# Directions For Using Eastern WebVPN

## Why should I use the WebVPN SSL Client?

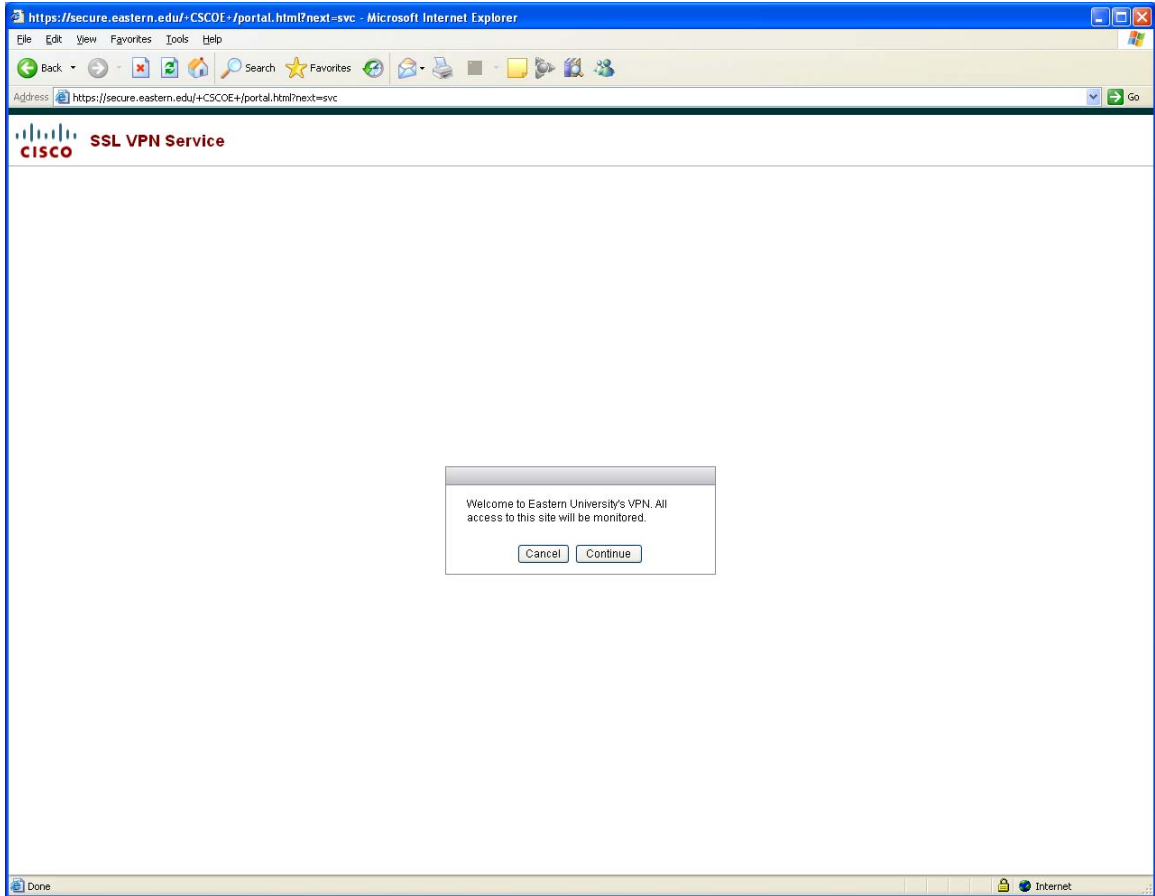
- Allows users to use the CARS system and send and receive email from anywhere.
- The Cisco SSL VPN Client provides end users running Microsoft Windows XP or Windows 2000 with the benefits of a Cisco bisects VPN client without the administrative overhead required to install and configure a client.
- The SSL WebVPN acts as a “split tunnel” which allows you to use the internet while logged into the WebVPN.
- When the client connects, the VPN ASA Firewall uses ActiveX on Windows Explorer or Java 1.4, or later on Netscape, Mozilla, or Firefox, to push the image.

## Directions for Internet Explorer

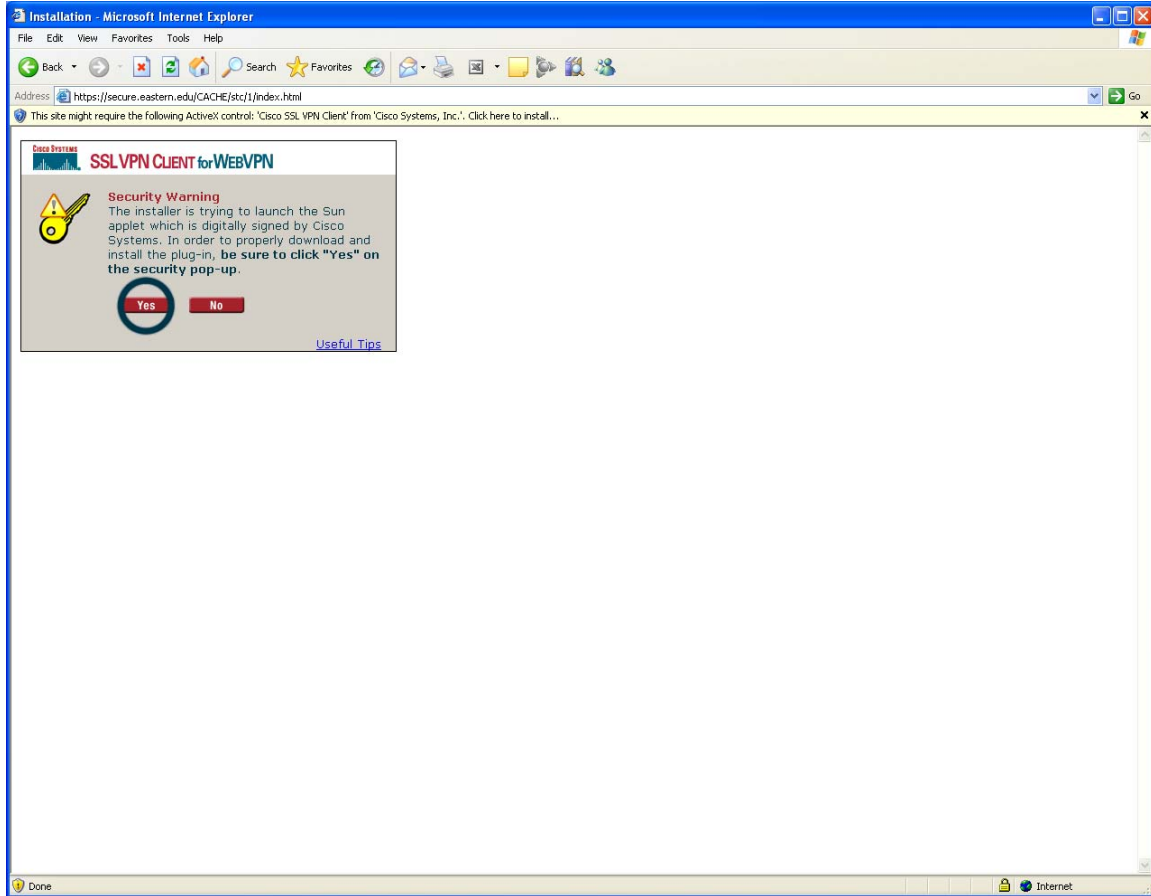
1. Please go to <https://secure.eastern.edu>. Log in using your Eastern username and password. \* Be sure to select **Eastern-University** in the “Group” drop down.



## 2. Click **Continue**.



3. Click on the pale yellow ActiveX bar at the top of the IE Window.



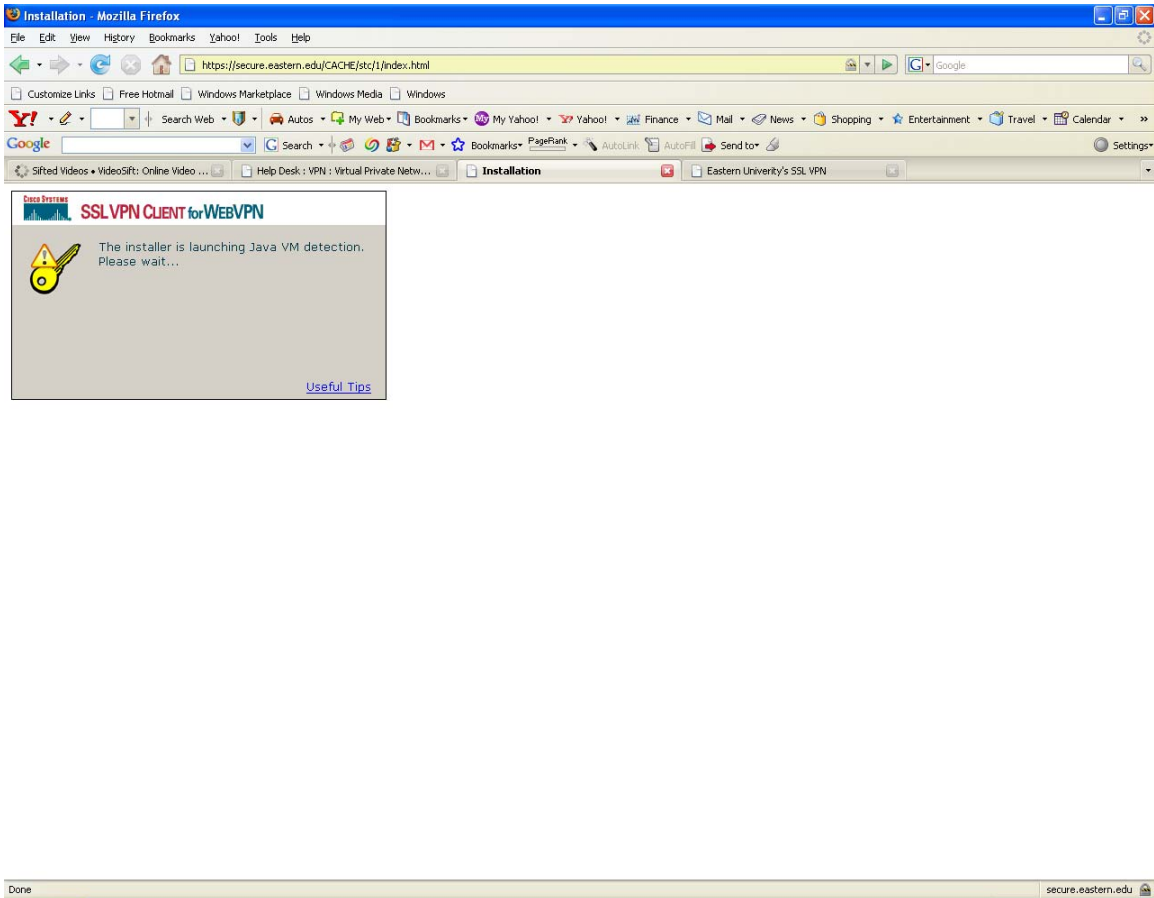
4. Click "Install" when prompted.



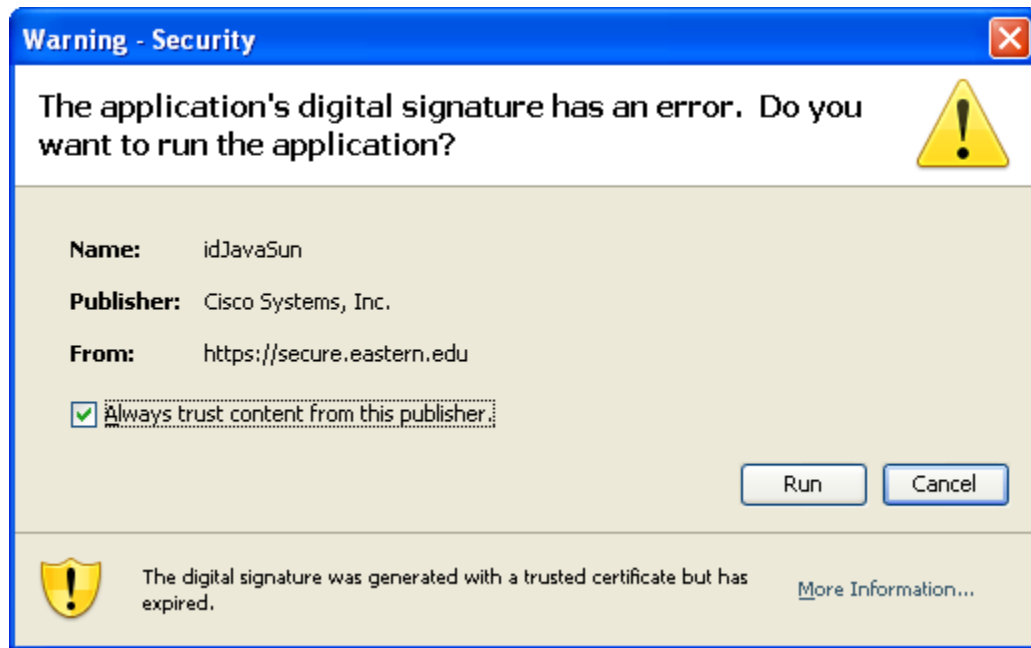
5. A key will appear in the Task Tray in the bottom right-hand corner of your screen.
6. **To disconnect**, right-click key icon and select “Disconnect”.

## Directions for FireFox 2.0.0.12

1. Please go to <https://secure.eastern.edu>. Log in using your Eastern username and password. \*Be sure to select **Eastern-University** in the “Group” drop down.
2. Make sure Java is enabled for Firefox.
  - a. For more information available here  
[http://websearch.about.com/od/firefox/ss/firefoxoptions\\_9.htm](http://websearch.about.com/od/firefox/ss/firefoxoptions_9.htm)



3. Ensure the “Always trust content from this publisher” box and click run.



4. A key will appear in the Task Tray in the bottom right-hand corner of your screen.
5. **To disconnect**, right-click key icon and select “Disconnect”.