



**EASTERN**  
UNIVERSITY

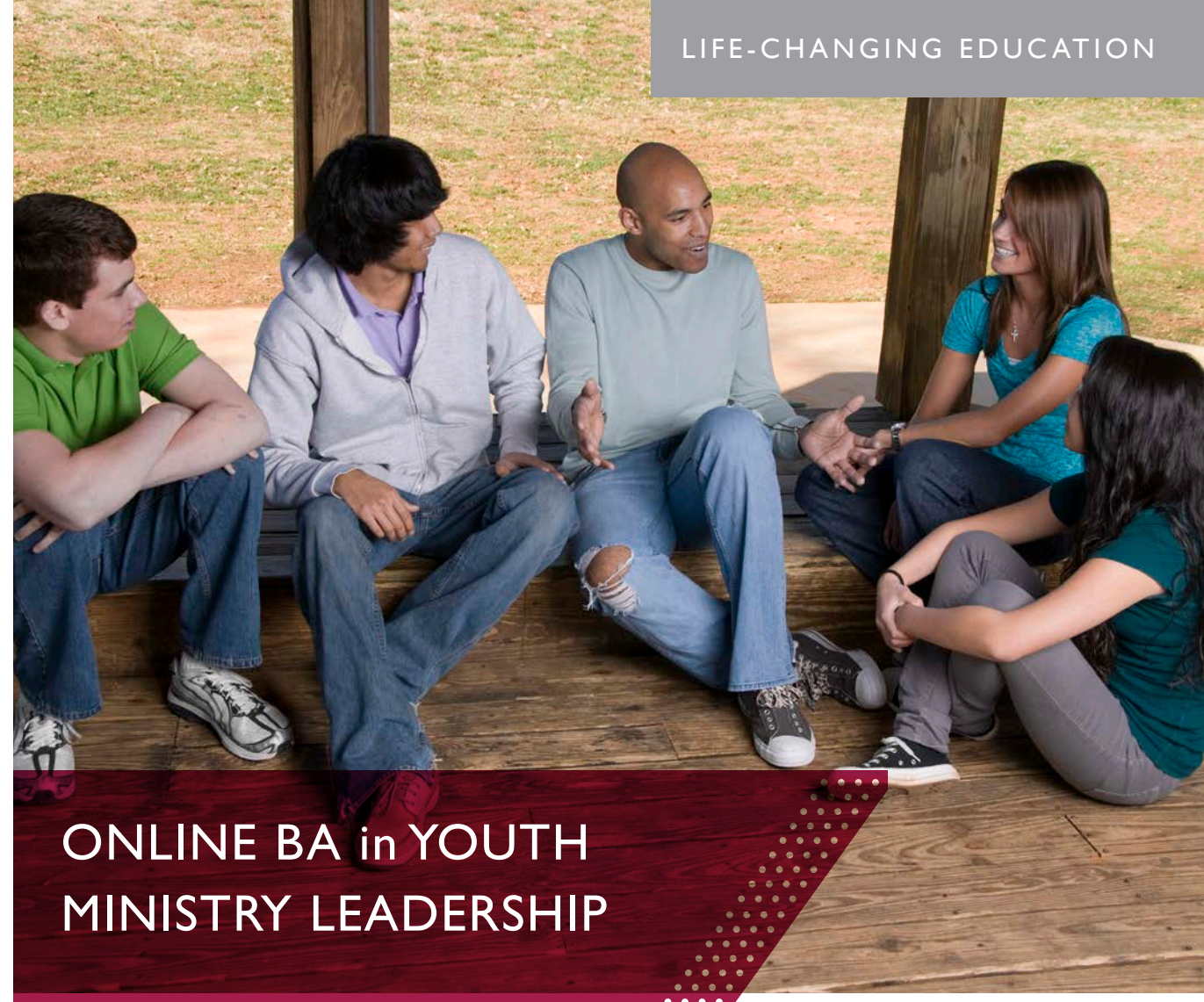
1300 Eagle Road | St. Davids, PA | 9087-3696

**GET STARTED TODAY!**

[www.eastern.edu](http://www.eastern.edu) | 610-341-1594

**IT'S TIME**

Version 1.0 6/8/11



LIFE-CHANGING EDUCATION

**ONLINE BA in YOUTH  
MINISTRY LEADERSHIP**



**CAMPOLO COLLEGE OF GRADUATE AND PROFESSIONAL STUDIES**



# WELCOME

Eastern University's Campolo College of Graduate and Professional Studies (CCGPS) serves nearly 1,400 students attending classes with 300 faculty throughout Southeastern and Central Pennsylvania and on five continents around the world.

Our nearly thirty programs range from associate degrees to Ph.D. We offer a variety of convenient delivery models, including adult accelerated, full semester, academic session, residency and online formats. Over 7,000 CCGPS alumni are transforming communities around the globe by integrating faith, reason, and justice with the passion and skills developed, honed, and nourished while they studied here.

The Campolo College of Graduate and Professional Studies is named for Dr. Tony Campolo, an internationally renowned prophetic voice whose lifelong association with and advocacy for Eastern University have provided a paradigm through which we attempt to accomplish our mission. I invite you to explore Eastern University and consider how we might help you to deepen, broaden, and lengthen your personal vocational journey.

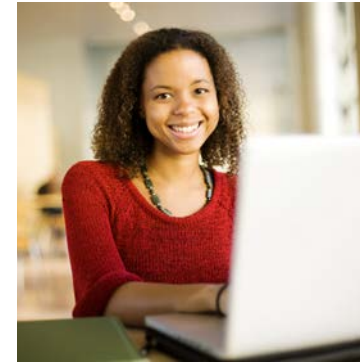
I look forward to seeing you at the  
Campolo College of  
Graduate and Professional Studies!



Debra Heath-Thornton, Ed.D.  
DEAN, CAMPOLO COLLEGE OF  
GRADUATE & PROFESSIONAL STUDIES



## REALIZE YOUR ASPIRATIONS



Eastern University is a comprehensive Christian university that integrates faith, reason, and justice for its students in undergraduate, graduate, seminary, and non-traditional adult programs. This learning community consists of over 4,000 students who share a passion to make a difference in their lives, their communities, and the world.

The Eastern University Department of Youth Ministry is committed to training and equipping men and women who will take the whole gospel to this broad and significant people group.

### REAL DIFFERENCES FOR REAL PEOPLE

- Small, student-focused classes
- Expert faculty
- Christian emphasis
- Multicultural learning perspective
- Ideal scheduling & locations for working adults





*“Eastern University gave me an environment where school became part of my life instead of taking it over. As a working single parent, that’s important. It’s been the perfect path for my degree.”*

CCGPS Graduate Student

CHOICE.  
FLEXIBILITY.  
ACCESS.  
SUCCESS.

# ADMISSION & DEGREE REQUIREMENTS

Eastern University’s Campolo College of Graduate and Professional Studies (CCGPS) offers undergraduate academic programs specifically designed for adult students seeking an opportunity to earn an undergraduate degree.

## ADMISSION REQUIREMENTS

- ❑ Must be a high school graduate and have received a diploma or GED
- ❑ 21 years of age or older (or independent student or graduate of an accredited two-year college)
- ❑ Minimum cumulative GPA of 2.0
- ❑ Minimum of 60 transfer credits

## CONTACT INFORMATION

Jill Hay  
Enrollment Counselor  
jhayl@eastern.edu  
610-322-1226

## ADMISSION CHECKLIST

- ❑ Completed and signed application for admission.
- ❑ A non-refundable \$25.00 application fee payable to Eastern University
- ❑ Current Resume or CV indicating work and education history and professional affiliations
- ❑ Contact information (name, title, telephone number; email address) for two professional recommendations.
- ❑ Official High School transcript/GED certificate.
- ❑ Official Post-secondary transcript(s) from each college or post-secondary institution attended.
- ❑ Graduates of an educational system outside the United States whose language of instruction was not English must submit an official score report with a minimum acceptable score from the Test of English as a Foreign Language (TOEFL) or International English Language Testing System (IELTS). Minimum acceptable scores for TOEFL are 79 for the Internet-based test, 213 for the computer-based test, and 550 for the paper-based test. The minimum acceptable IELTS score is 6.5.

## ADMISSION REQUIREMENTS:

- ❑ Completed and signed original documents are required for all application forms. Faxed transcripts are considered unofficial documents and are not acceptable for admission to the University. Completed applications with all necessary documentation are reviewed on a regular basis.
- ❑ Applicants are responsible for supplying all necessary documentation to Eastern University. The University will not inform an applicant when documentation arrives. It is the individual applicant’s responsibility to monitor the status of his/her application file and ensure the completion of his/her file.
- ❑ Once the application, application fee, official transcript(s), resume, recommendors’ contact information, essay, DOLE form and any additional credentials required have been received, the applicant’s records will be evaluated and he/she will receive notice of admission status by mail.
- ❑ Applicants interested in applying in Financial Aid should contact the Student Aid Office at 610-341-5842, [www.eastern.edu/centers/finaid](http://www.eastern.edu/centers/finaid)
- ❑ From time to time, personal interviews may be requested by a program director and/or admissions director prior to an admission decision being rendered.
- ❑ Applications, documentation and application fee are valid for two years upon receipt by the University.





# ONLINE BACHELOR OF ARTS IN YOUTH MINISTRY LEADERSHIP

There are roughly 1.2 billion people on this planet between the ages of 13 and 20, a population that represents a strategic window of opportunity for the Kingdom of God. The Eastern University Youth Ministries major exists to equip, guide and nurture students who are exploring ways to seize this strategic opportunity through holistic, relevant youth ministry.

Designed for working professionals and delivered at one of Eastern's Greater Philadelphia area campuses, the blended online delivery model combines the rich learning environment of a classroom approach with the convenience of online distance learning. Majority of the courses in this program will be offered 100%

online. Four of the courses will require students to come to the Greater Philadelphia area to participate in residencies. Students will be required to come to campus for 2 weeks each May to take 2 course intensives. Course time will be spent in the classroom as well as traveling to various ministry sites to interact with

youth ministry professionals in the field. The Youth Ministries Faculty are all experienced practitioners who bring to the classroom in-the-trenches expertise combined with cutting-edge youth ministry scholarship.

## ACADEMIC COURSE SUMMARY Total Credits within the Degree: 58

### Courses Offered 100% Online

- YMIN 101 Introduction to Youth Ministry (3)
- YMIN 102 Gospel & Adolescent Culture (3)
- YMIN 202W Youth Ministry and Evangelistic Strategy (3)
- YMIN 205 Youth Ministry and the Small Group Process (3)
- YMIN 305 Youth Ministry Administration (3)
- YMIN 404 Senior Seminar (2)
- PSY 206 Adolescent Psychology (3)

### Field Placement Courses

- YMIN 315 Field Placement I (2)
- YMIN 415 Field Placement II (2)

### Courses Offered in May Residencies

- YMIN 207 Youth Ministry Programming Skills (3)
- YMIN 406 Youth Ministry Skills Clinic (2)
- YMIN 402 Discipling Youth (2)

Choose ONE of the following courses:

- YMIN 203 Youth Ministry in the Wilderness (3)
- YMIN 303 Ministry in the Urban Setting (3)

### Bible and Theology Requirements (100% Online)

- BIB 101 Nature and Meaning of the Old Testament (3)
- BIB 102 Nature and Meaning of the New Testament (3)
- THEO 210 Foundations of Christian Spirituality (3)
- THEO 240 Theological Thinking (3)

Four courses in Bible or Theology above the 200 level are required.

[www.eastern.edu/online\\_courses/youth\\_ministries/](http://www.eastern.edu/online_courses/youth_ministries/)

