

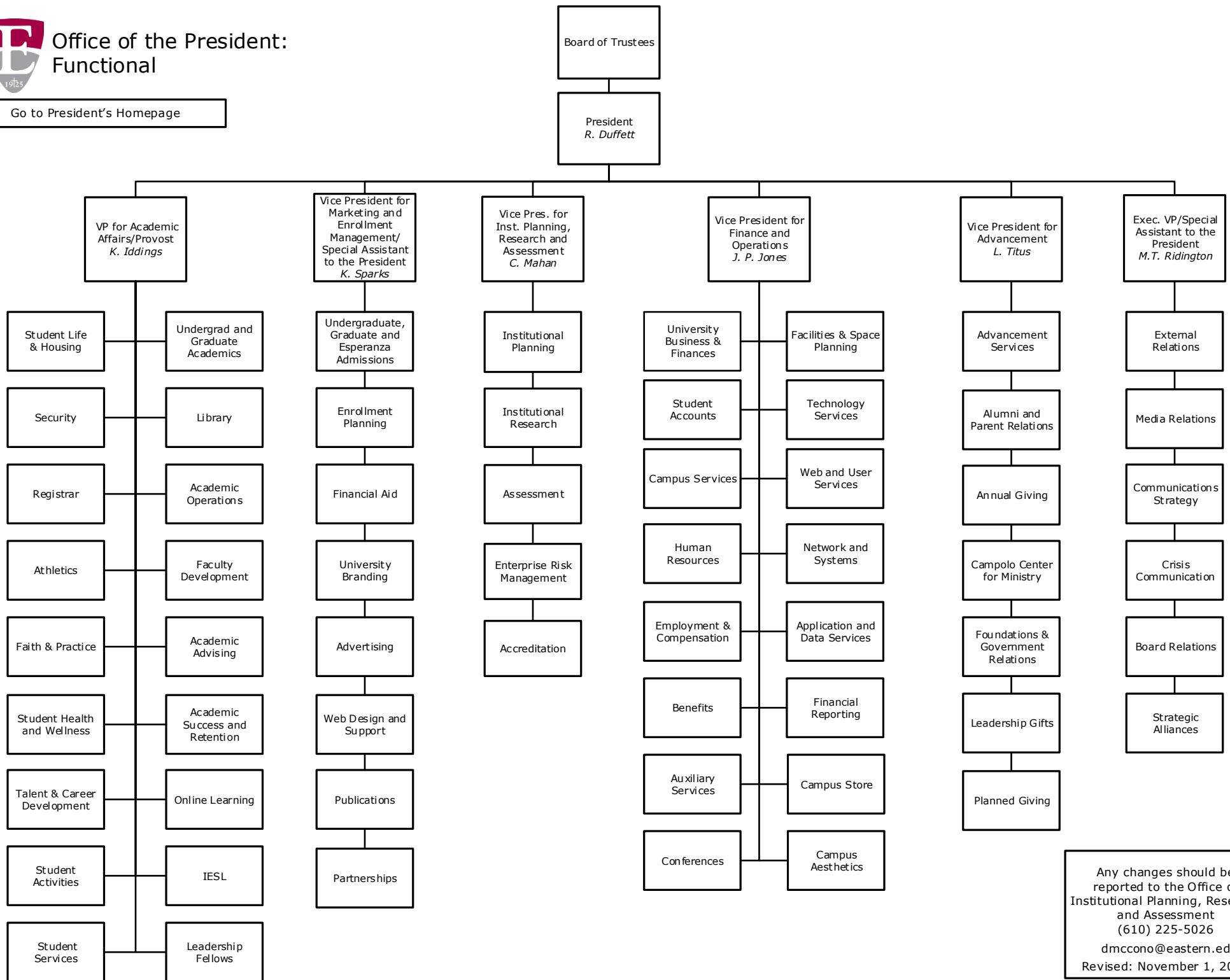
————— Indicates a Direct Report  
- - - - - Indicates a Dual Report  
..... Indicates a Functional Report  
\* Position Reports Elsewhere

Any changes should be reported to the Office of Institutional Planning, Research and Assessment (610) 225-5026 dmccono@eastern.edu Revised: November 1, 2016



# Office of the President: Functional

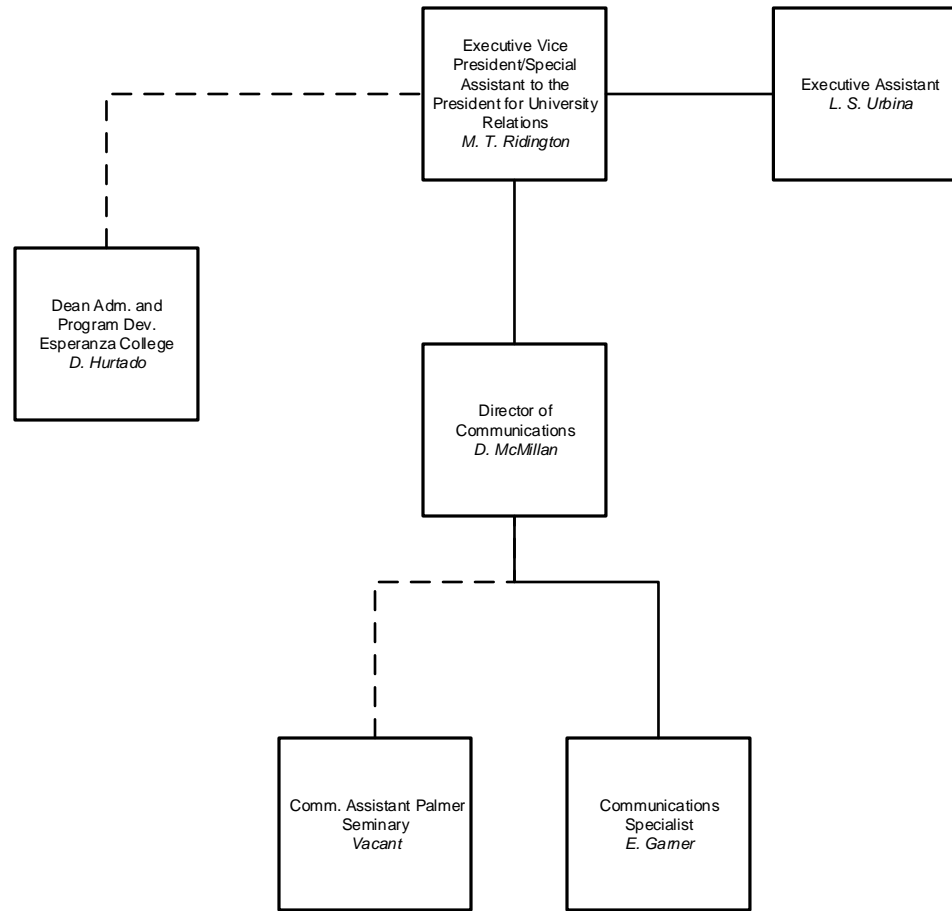
[Go to President's Homepage](#)



Any changes should be reported to the Office of Institutional Planning, Research and Assessment (610) 225-5026  
 dmccono@eastern.edu  
 Revised: November 1, 2016



Office of the President  
Office of the Executive Vice  
President/Special Assistant to the  
President for University Relations

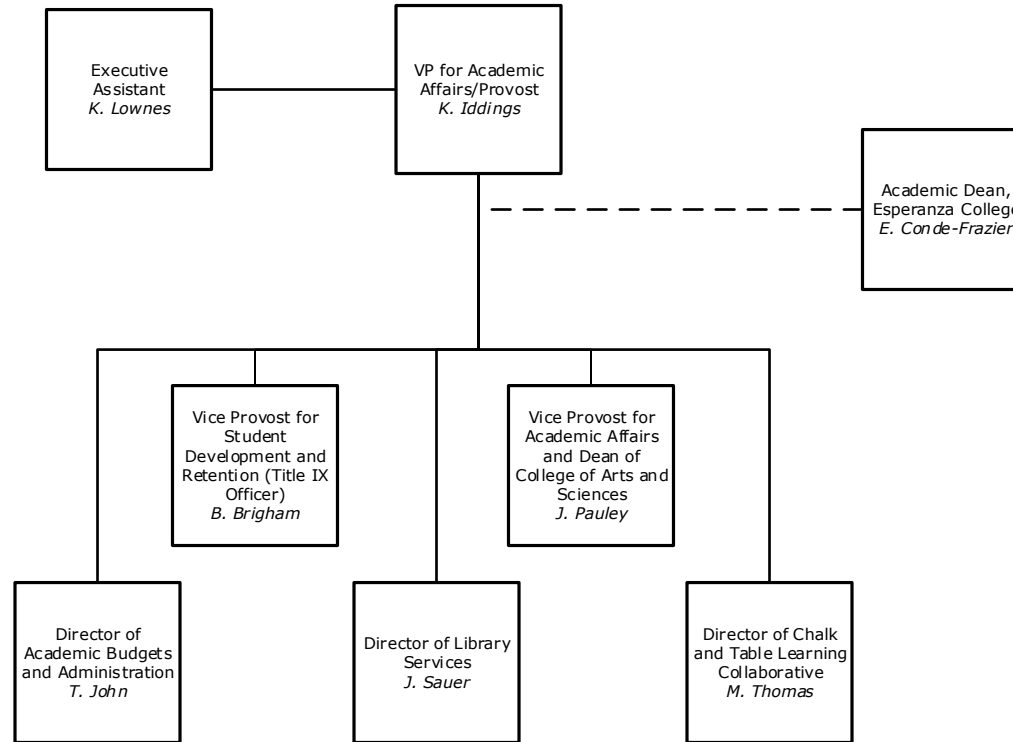


— Indicates a Direct Report  
- - - - - Indicates a Dual Report  
· Indicates a Functional Report  
\* Position Reports Elsewhere

Any changes should be reported to the Office of Institutional Planning, Research and Assessment (610) 225-5026 dmcono@eastern.edu Revised: November 1, 2016



Office of the VP for Academic Affairs/Provost

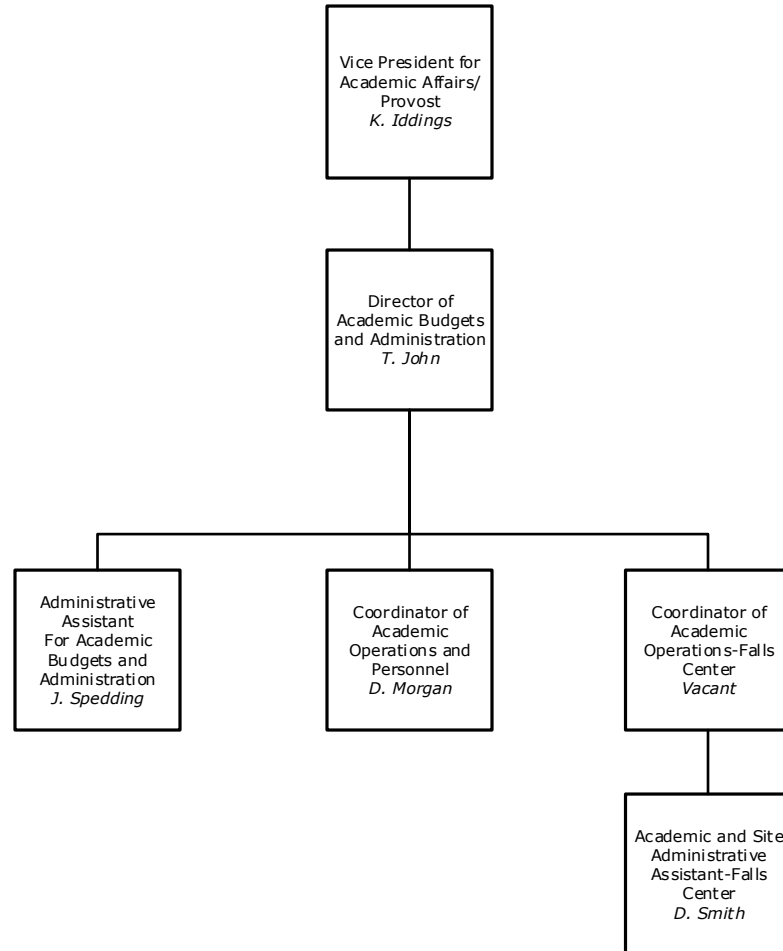


Any changes should be reported to the Office of Institutional Planning, Research and Assessment (610) 225-5026 dmccono@eastern.edu Revised: November 1, 2016

- Indicates a Direct Report
- - - - - Indicates a Dual Report
- ..... Indicates a Functional Report
- \* Position Reports Elsewhere



Division of Academic Affairs  
Academic Operations Group

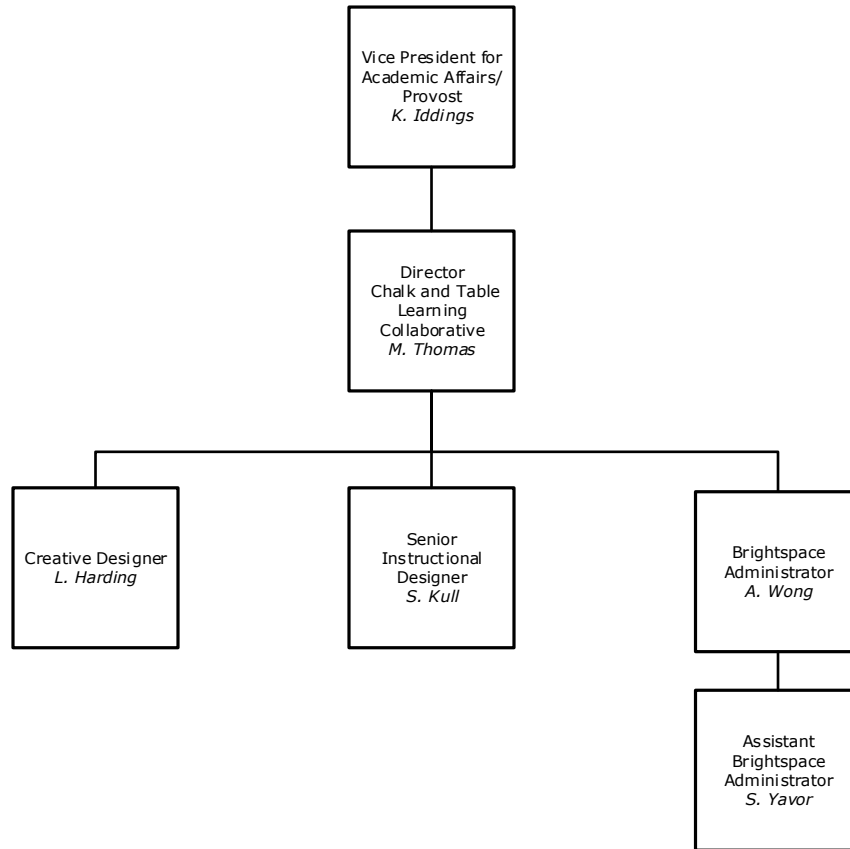


Any changes should be reported to the Office of Institutional Planning, Research and Assessment  
(610) 225-5026  
dmccono@eastern.edu  
Revised: November 1, 2016

————— Indicates a Direct Report  
- - - - - Indicates a Dual Report  
..... Indicates a Functional Report  
\* Position Reports Elsewhere



Division of Academic Affairs  
Chalk and Table Learning  
Collaborative

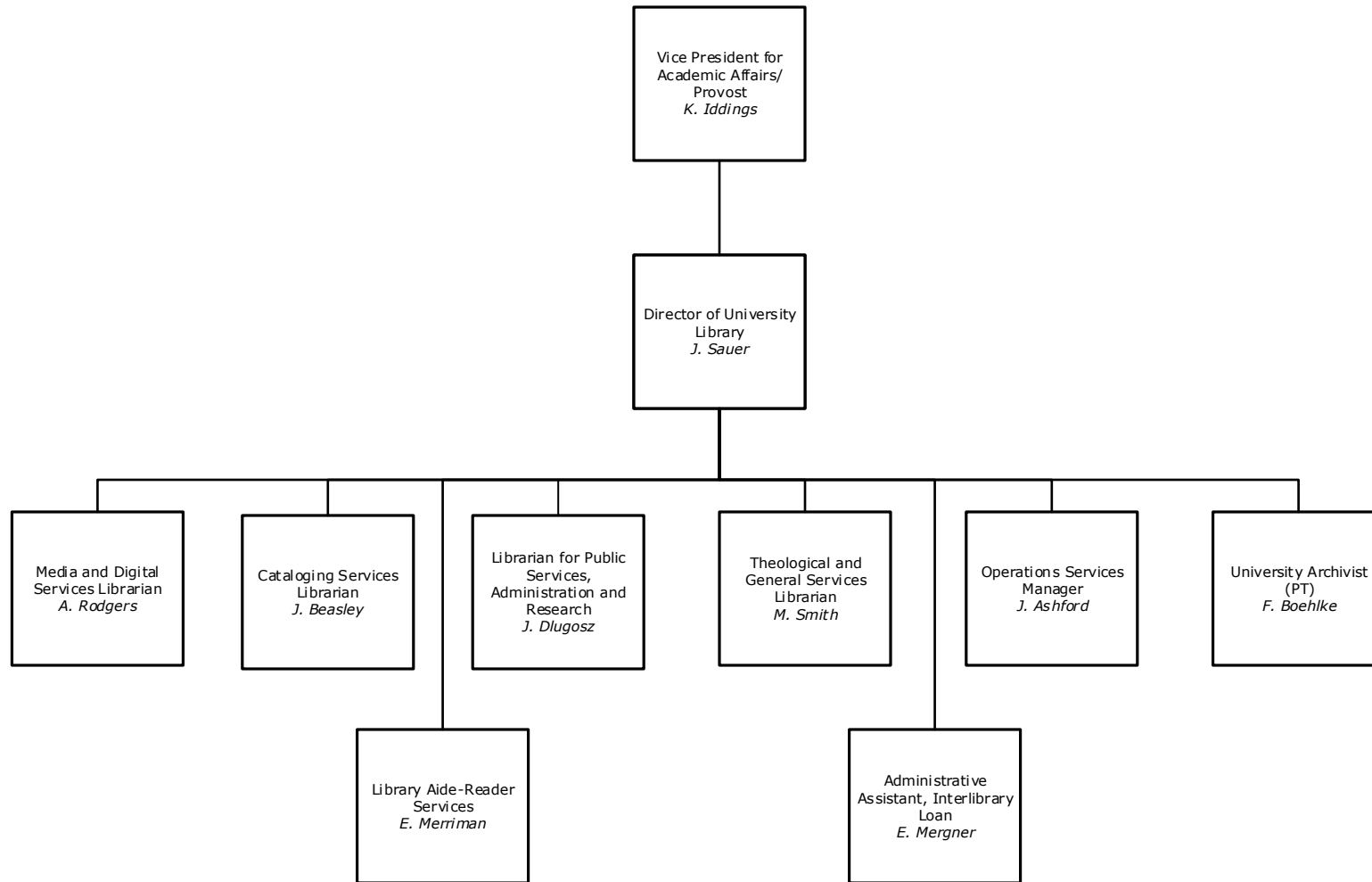


Any changes should be reported to the Office of Institutional Planning, Research and Assessment (610) 225-5026 dmccono@eastern.edu Revised: November 1, 2016

- Indicates a Direct Report
- - - - - Indicates a Dual Report
- ..... Indicates a Functional Report
- \* Position Reports Elsewhere



Division of Academic Affairs  
Office of the Director of University Library

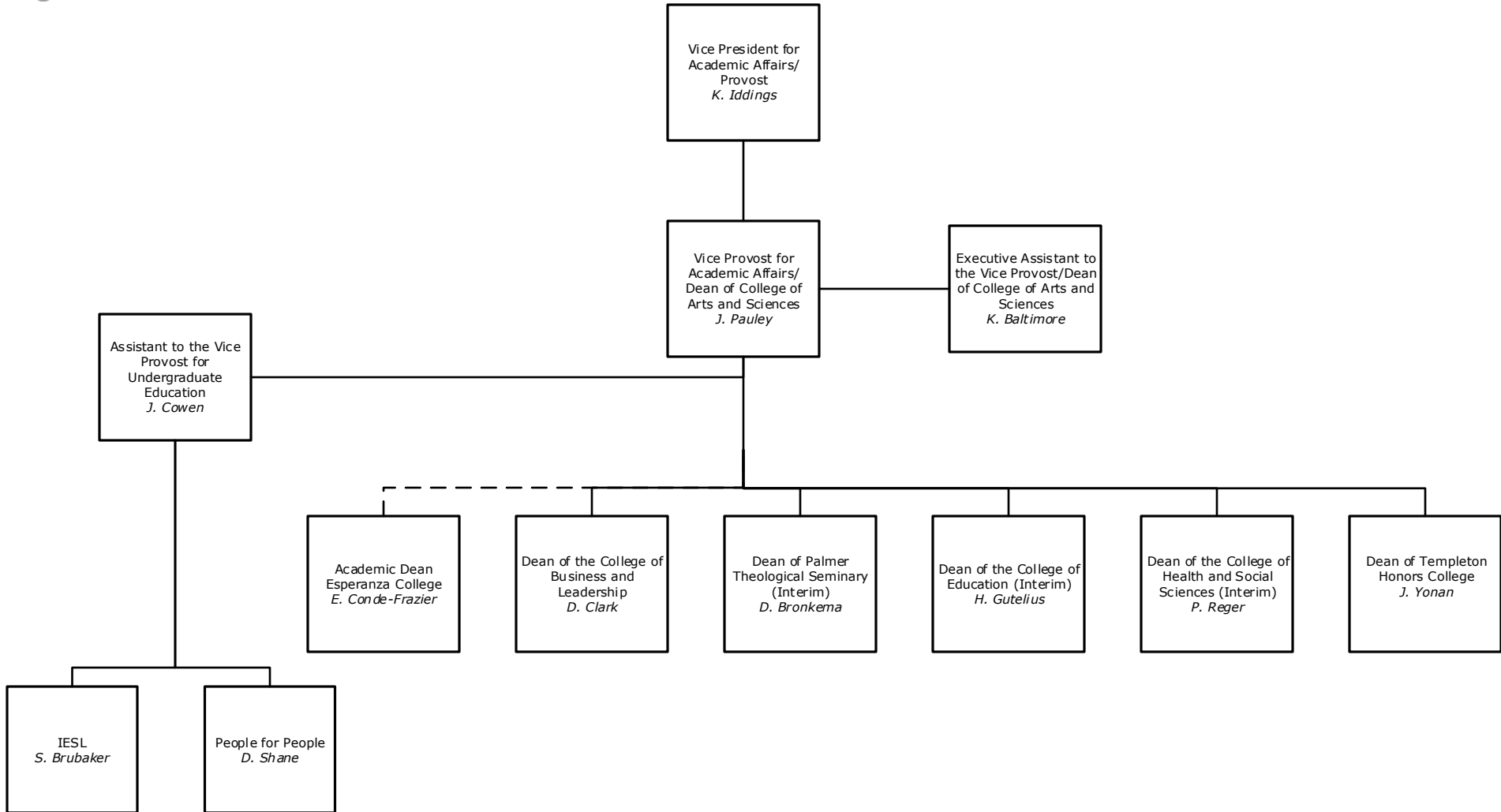


Any changes should be reported to the Office of Institutional Planning, Research and Assessment (610) 225-5026 dmcono@eastern.edu Revised: November 1, 2016

- Indicates a Direct Report
- - - - - Indicates a Dual Report
- ..... Indicates a Functional Report
- \* Position Reports Elsewhere



Division of Academic Affairs  
Vice Provost for Academic Affairs



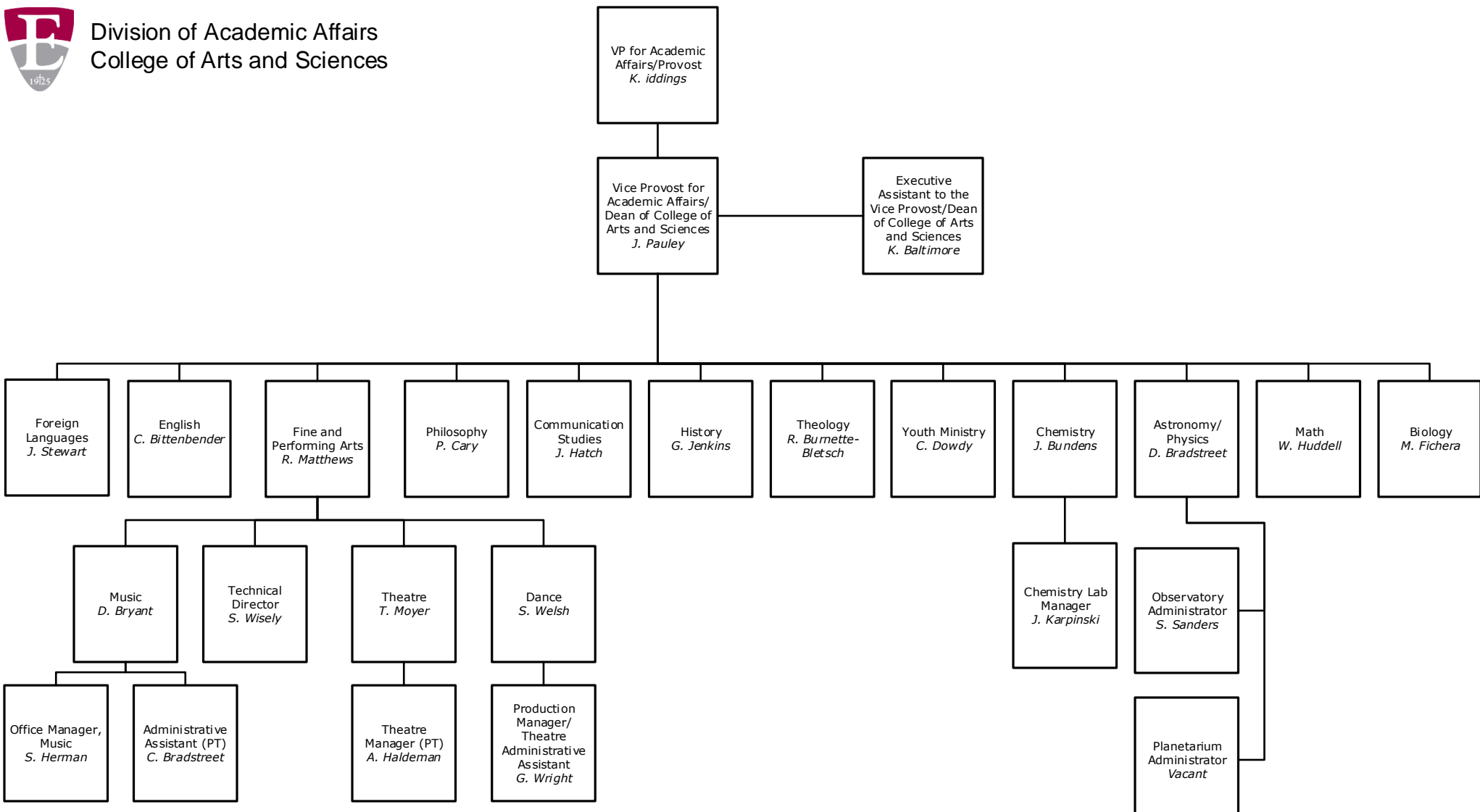
Any changes should be reported to the Office of Institutional Planning, Research and Assessment  
(610) 225-5026  
dmccono@eastern.edu  
Revised: November 1, 2016

- Indicates a Direct Report
- - - - - Indicates a Dual Report
- ..... Indicates a Functional Report
- \* Position Reports Elsewhere





Division of Academic Affairs  
College of Arts and Sciences



Faculty, College of Arts and Sciences

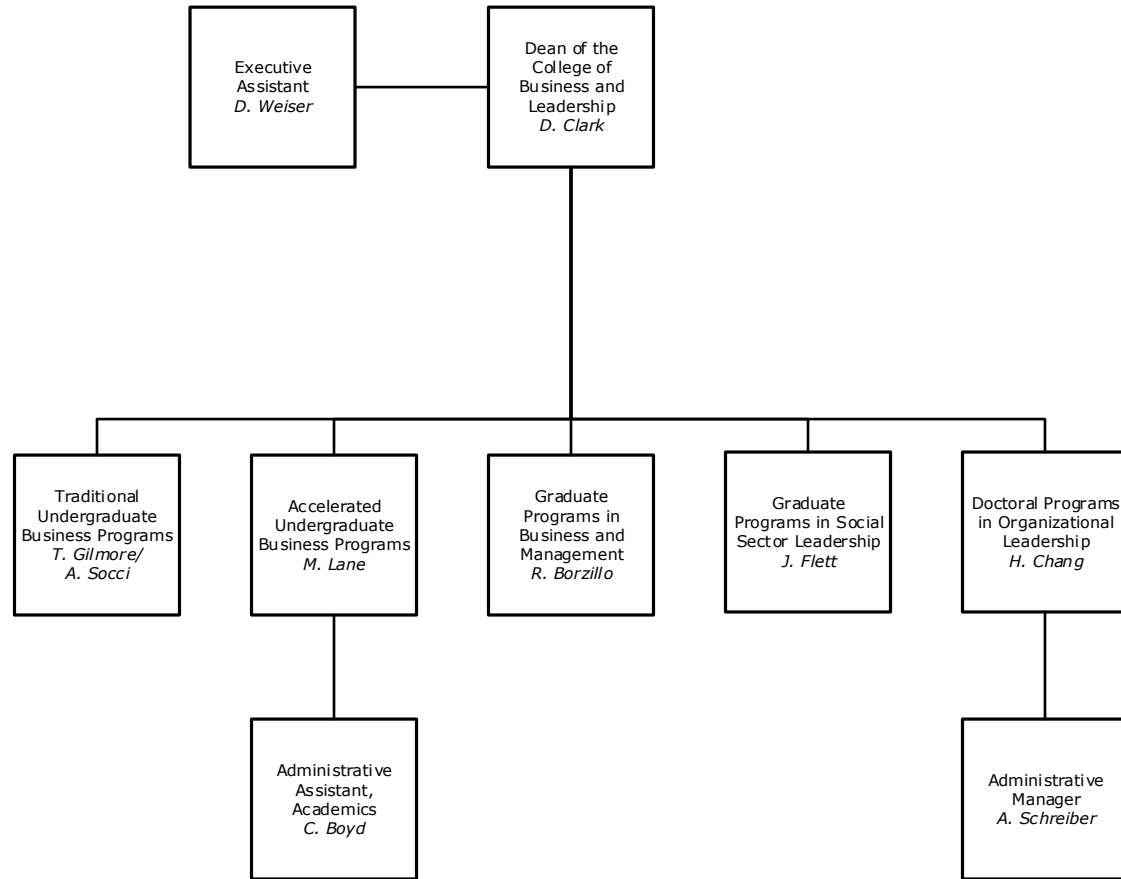
C. Bittenbender	M. Fichera	M. Laakso	J. Park
S. Boyer	E. Flett	J. Lawton	D. Pearson
D. Bradstreet	T. Flynn	M. Fichera	M. Peterson
F. Brinkmann	A. Francois	M. Lee	E. Ramirez
D. Bryant	J. Giammarco	W. Lutz	B. Richards
J. Bundens	R. Gidjunis	R. Matthews	D. Robbins
R. Burnette-Bletsch	S. Haney	N. McLallen	J. Stewart
C. Butynskyi	J. Hatch	S. McMonagle	W. Storm
P. Cary	K. Hayes	C. Micklewright	D. Unander
C. Dowdy	R. Hays	J. Morgan	S. Welsh
B. Dube	W. Huddell	T. Moyer	C. Willenbring
P. Enns	G. Jenkins	C. Nigro	

Any changes should be reported to the Office of Institutional Planning, Research and Assessment  
(610) 225-5026  
dmcco@eastern.edu  
Revised: November 1, 2016

————— Indicates a Direct Report  
- - - - - Indicates a Dual Report  
..... Indicates a Functional Report  
\* Position Reports Elsewhere



Division of Academic Affairs  
Office of the Dean-College of Business and Leadership

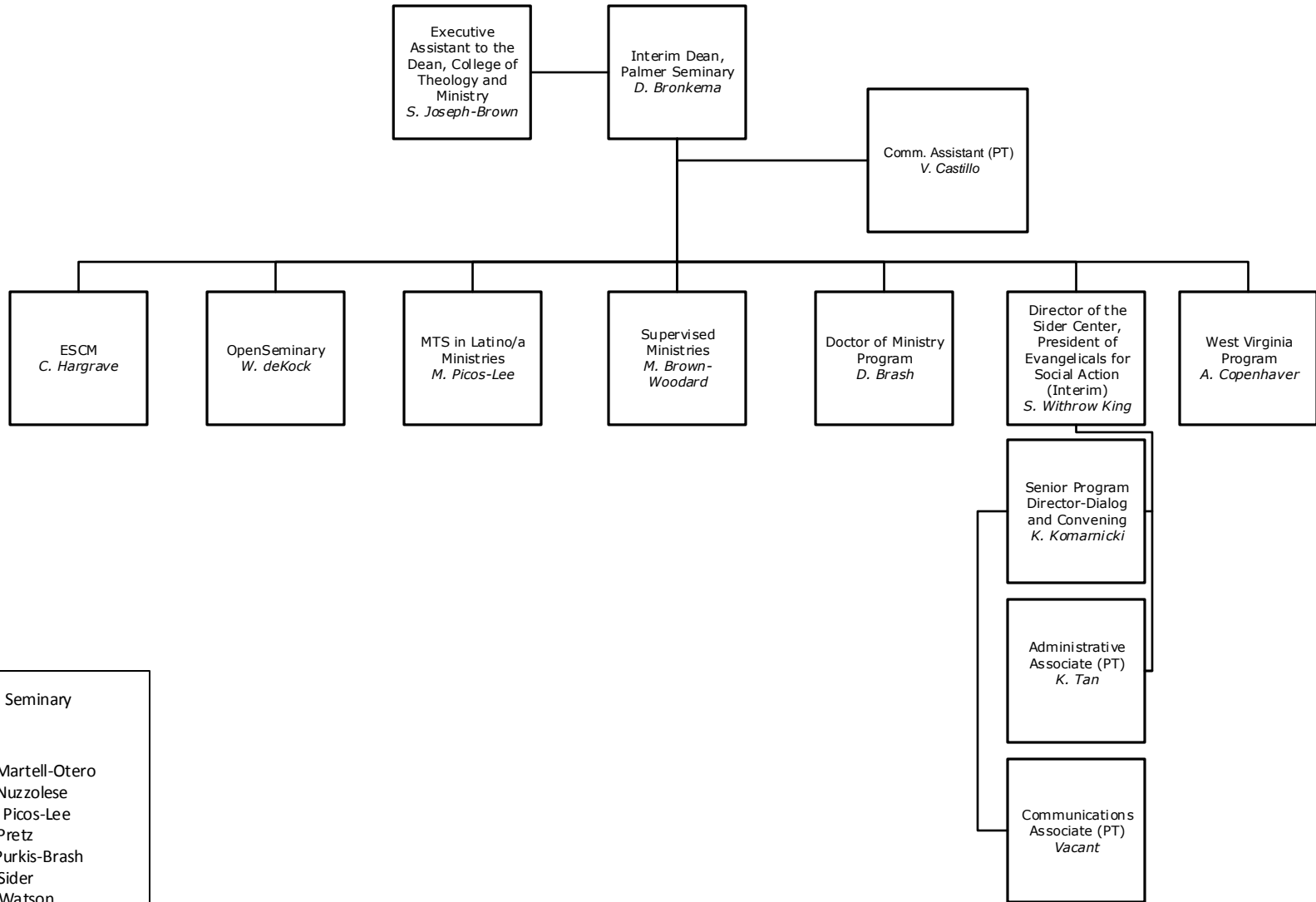


Faculty, College of Business and Leadership

L. Backues	M.J. Jones
B. Birmingham	R. Jonsen
R. Borzillo	M. Lane
H. Chang	R. Lowery
D. Clark	K. Mensch
W. Collins	F. Oikelome
L. Elken	E. Rios
JA. Flett	A. Socci
T. Gilmore	V. Weigel
D. Greenhalgh	J. Zagerman

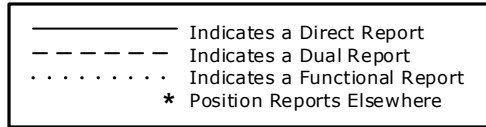
Any changes should be reported to the Office of Institutional Planning, Research and Assessment  
(610) 225-5026  
dmccono@eastern.edu  
Revised: November 1, 2016

— Indicates a Direct Report  
- - - Indicates a Dual Report  
..... Indicates a Functional Report  
\* Position Reports Elsewhere

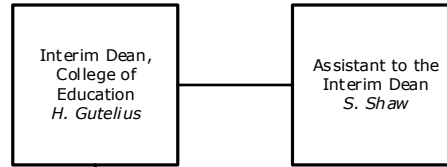


Faculty, Palmer Theological Seminary

A. Adelekan	L. Martell-Otero
K. Berghuis	F. Nuzzolese
P. Blocker	M. Picos-Lee
D. Brash	T. Pretz
D. Bronkema	J. Purkis-Brash
M. Brown-Woodard	R. Sider
D. Chen	D. Watson
W. de Kock	D. Winters
D. Farmer	P. Wool
G. Hancock-Stefan	



Any changes should be reported to the Office of Institutional Planning, Research and Assessment (610) 225-5026  
dmccono@eastern.edu  
Revised: November 1, 2016



Loeb Program, Undergraduate Studies in Education

Graduate Studies in Education

**Certifications**  
 Early Childhood Education-PK-4  
*C. Neimetz*  
 Early Childhood Ed. With Special Ed.-N-8  
*N. McKeown*  
 ESL-K-12  
 Foreign Language Education K-12  
 Music K-12  
 Secondary Ed. Biology 7-12  
 Secondary Ed. Chemistry 7-12  
 Secondary Ed. Communications 7-12  
 Secondary Ed. English 7-12  
 Secondary Ed. Math 7-12  
 Secondary Ed. Social Studies 7-12  
*H. Gutelius*

Early Childhood Education  
*C. Neimetz*

Middle & Secondary Education  
*D. Mountz*

Organizational Leadership, TESOL  
*H. Gutelius*

Reading  
*K. Hastings*

Elementary/Early Childhood Education/  
 Multicultural Education  
*C. Neimetz*

UG and Grad Student Teaching and Field Experience/Inst. Coach Endorsement  
*W. Yerger*

Special Ed Autism Course Work  
*N. McKeown*

**Certifications**  
 Early Childhood Education-PK-4  
 Early Childhood Director  
*C. Neimetz*  
 Early Childhood Ed. With Special Ed.-Pre-K-8 & 7-12  
 Supervisor of Special Ed.  
*N. McKeown*  
 Middle Level Education  
*D. Mountz*  
 General Supervisor-K-12  
 Reading Supervisor K-12  
 Reading Specialist K-12  
*K. Hastings*  
 ESL-K-12  
 Foreign Language Education K-12  
 Music K-12  
 Secondary Ed. Biology 7-12  
 Secondary Ed. Chemistry 7-12  
 Secondary Ed. Communications 7-12  
 Secondary Ed. English 7-12  
 Secondary Ed. Math 7-12  
 Secondary Ed. Social Studies 7-12  
*H. Gutelius*  
 Health and P.E.  
*I. Belkins*  
 School Principalship  
*N. Rotoli*

Faculty, College of Education

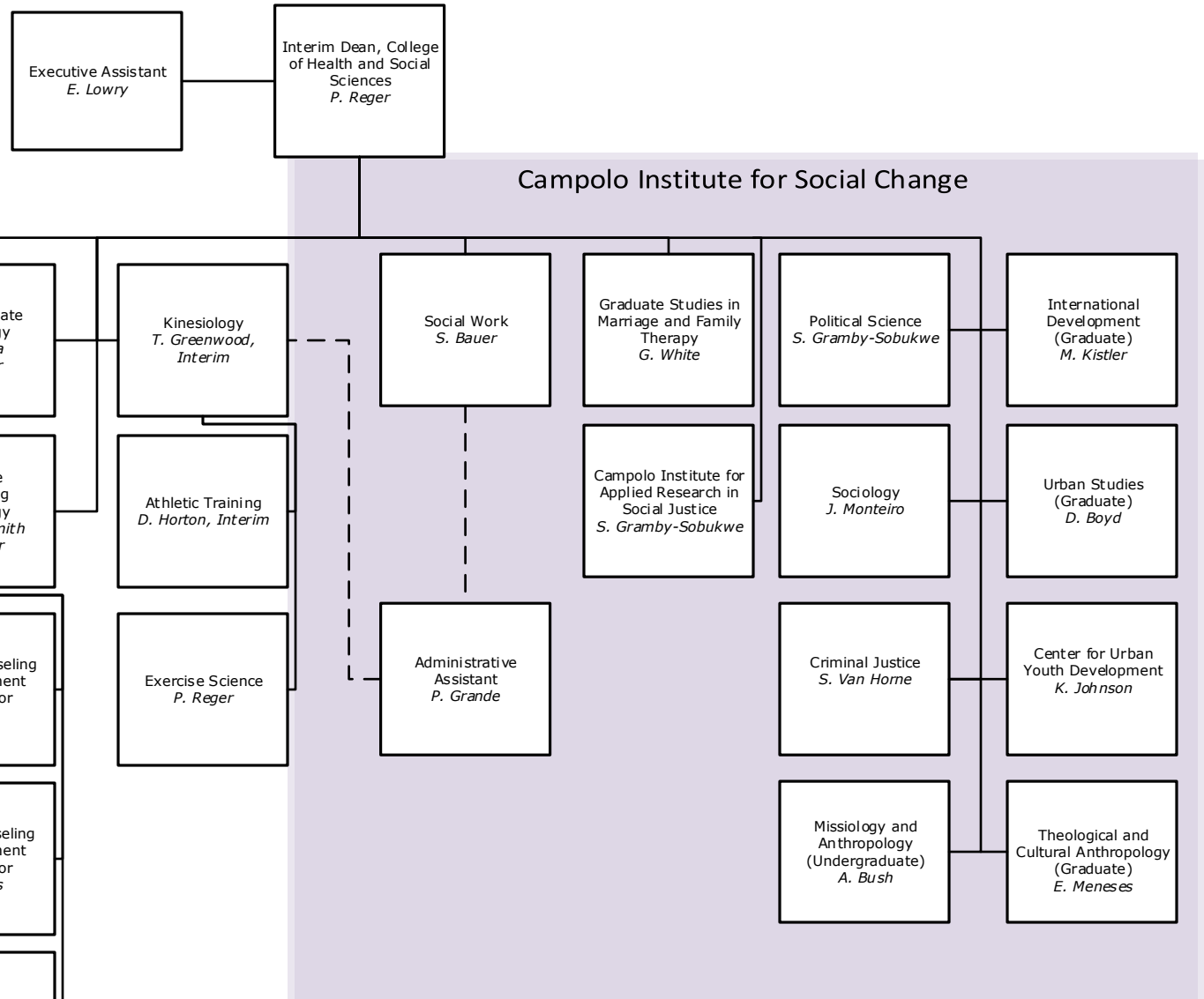
- |              |             |
|--------------|-------------|
| G. Batdorf   | G. McCord   |
| I. Bilkins   | N. McKeown  |
| T. Bonerbo   | H. Mercurio |
| R. Christman | D. Mountz   |
| H. Gutelius  | C. Neimetz  |
| K. Hastings  | W. Yerger   |
| F. Kawtoski  |             |

Any changes should be reported to the Office of Institutional Planning, Research and Assessment  
 (610) 225-5026  
 dmcco@eastern.edu  
 Revised: November 1, 2016





Division of Academic Affairs  
College of Health and Social Sciences

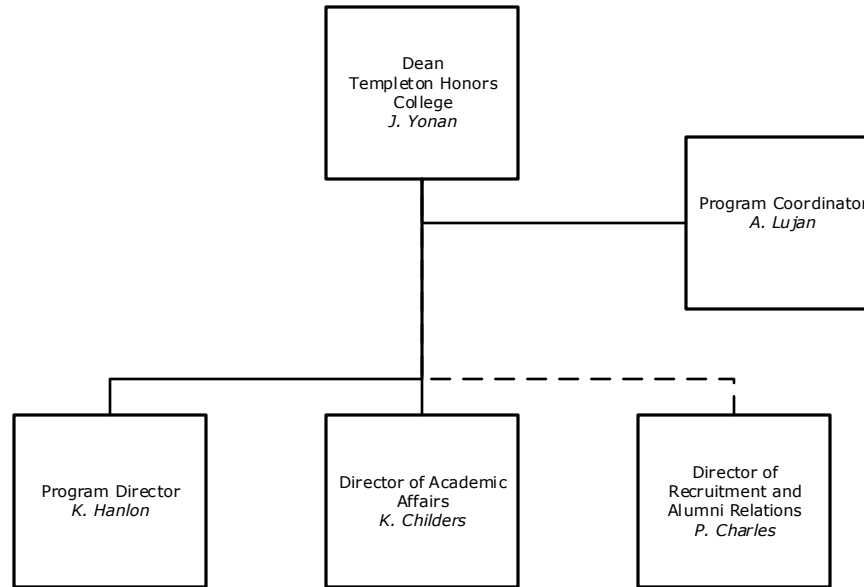


Any changes should be reported to the Office of Institutional Planning, Research and Assessment  
(610) 225-5026  
dmccocono@eastern.edu  
Revised: November 1, 2016

— Indicates a Direct Report  
- - - Indicates a Dual Report  
..... Indicates a Functional Report  
\* Position Reports Elsewhere

Faculty, College of Health and Social Sciences

F. Aiello	D. DeLong	D. Gribbin	W. Mercier	C. Sparks
A. Alexander	K. Di Rado	K. Guevin	J. Monteiro	T. Stoppa
S. Bauer	S. Edgar-Smith	D. Horton	M. Mtika	D. Trimble
D. Boyd	E. Fuguet	C. Jackson	R. Palmer	Y. Turner
M. Boylston	S. Gramby-Sobukwe	S. Jackson	S. Perez-Jarmul	S. Van Home
F. Bronkema	T. Greenwood	K. Johnson	M. Peters	K. Van Horn
A. Bush	L. Gregory	K. Kerrin	K. Poppa	C. Von Colln-Applying
C. Campbell		C. Kunsch	P. Reger	R. Walters
C. Cardwell		E. Meneses	G. Remy	G. White
W. Chung			G. Saba	



Faculty, Templeton Honors College

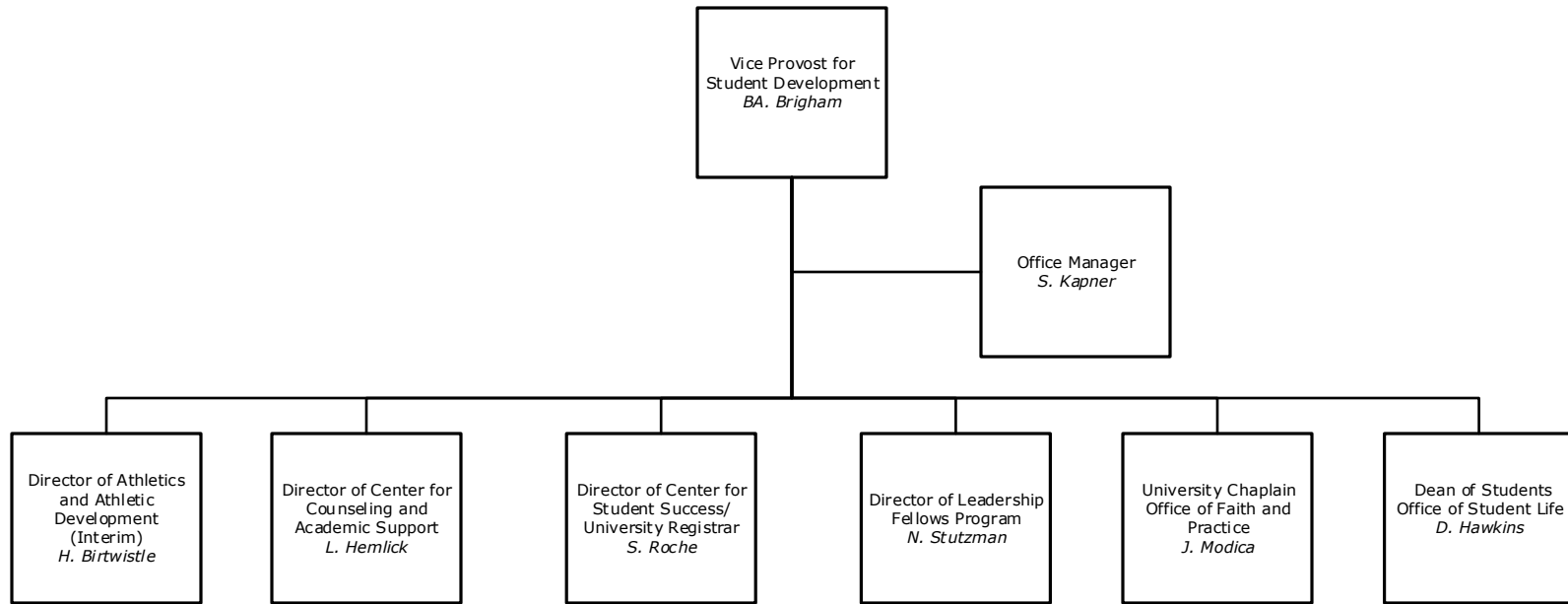
K. Childers  
J. Dill  
F. Putnam  
J. Yonan

Any changes should be reported to the Office of Institutional Planning, Research and Assessment (610) 225-5026 dmccono@eastern.edu Revised: November 1, 2016

— Indicates a Direct Report  
- - - Indicates a Dual Report  
..... Indicates a Functional Report  
\* Position Reports Elsewhere



Division of Academic Affairs  
Vice Provost for Student Development



Any changes should be reported to the Office of Institutional Planning, Research and Assessment  
(610) 225-5026  
dmccono@eastern.edu  
Revised: November 1, 2016

————— Indicates a Direct Report  
- - - - - Indicates a Dual Report  
..... Indicates a Functional Report  
\* Position Reports Elsewhere

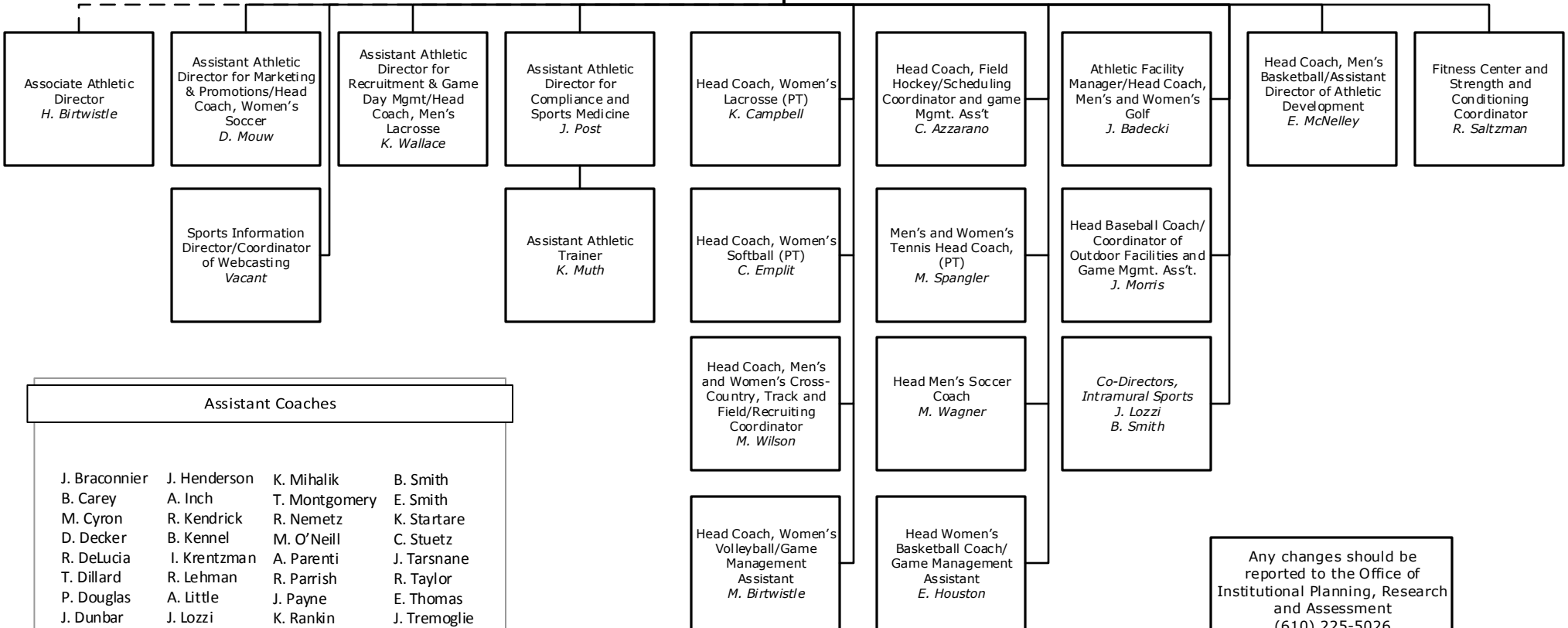


Division of Academic Affairs  
 Vice Provost for Student Development  
 Athletics

Vice Provost for Student Development  
*BA. Brigham*

Director of Athletics and Athletic Development (Interim)  
*H. Birtwistle*

Admin Assistant  
*D. Grazulis*



Assistant Coaches			
J. Braconnier	J. Henderson	K. Mihalik	B. Smith
B. Carey	A. Inch	T. Montgomery	E. Smith
M. Cyron	R. Kendrick	R. Nemetz	K. Startare
D. Decker	B. Kennel	M. O'Neill	C. Stuetz
R. DeLucia	I. Krentzman	A. Parenti	J. Tarsnane
T. Dillard	R. Lehman	R. Parrish	R. Taylor
P. Douglas	A. Little	J. Payne	E. Thomas
J. Dunbar	J. Lozzi	K. Rankin	J. Tremoglie
J. Fritsche	D. Mangin	Z. Ray	C. Williams
B. Hawkins	H. Manion	T. Regner	V. Wilson

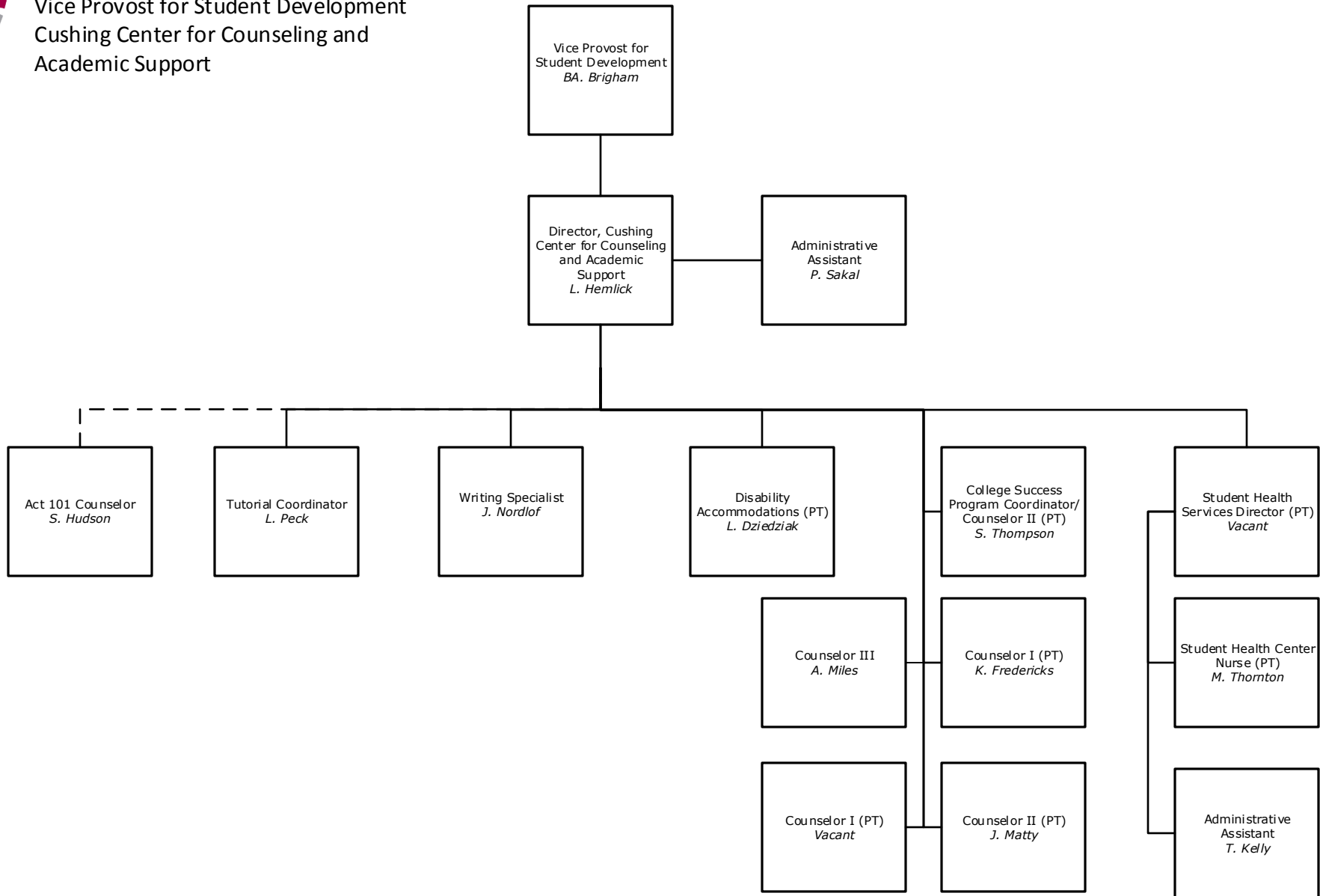
Any changes should be reported to the Office of Institutional Planning, Research and Assessment (610) 225-5026  
 dmcco@eastern.edu  
 Revised: November 1, 2016

————— Indicates a Direct Report  
 - - - - - Indicates a Dual Report  
 . . . . . Indicates a Functional Report  
 \* Position Reports Elsewhere





Division of Academic Affairs  
Vice Provost for Student Development  
Cushing Center for Counseling and  
Academic Support

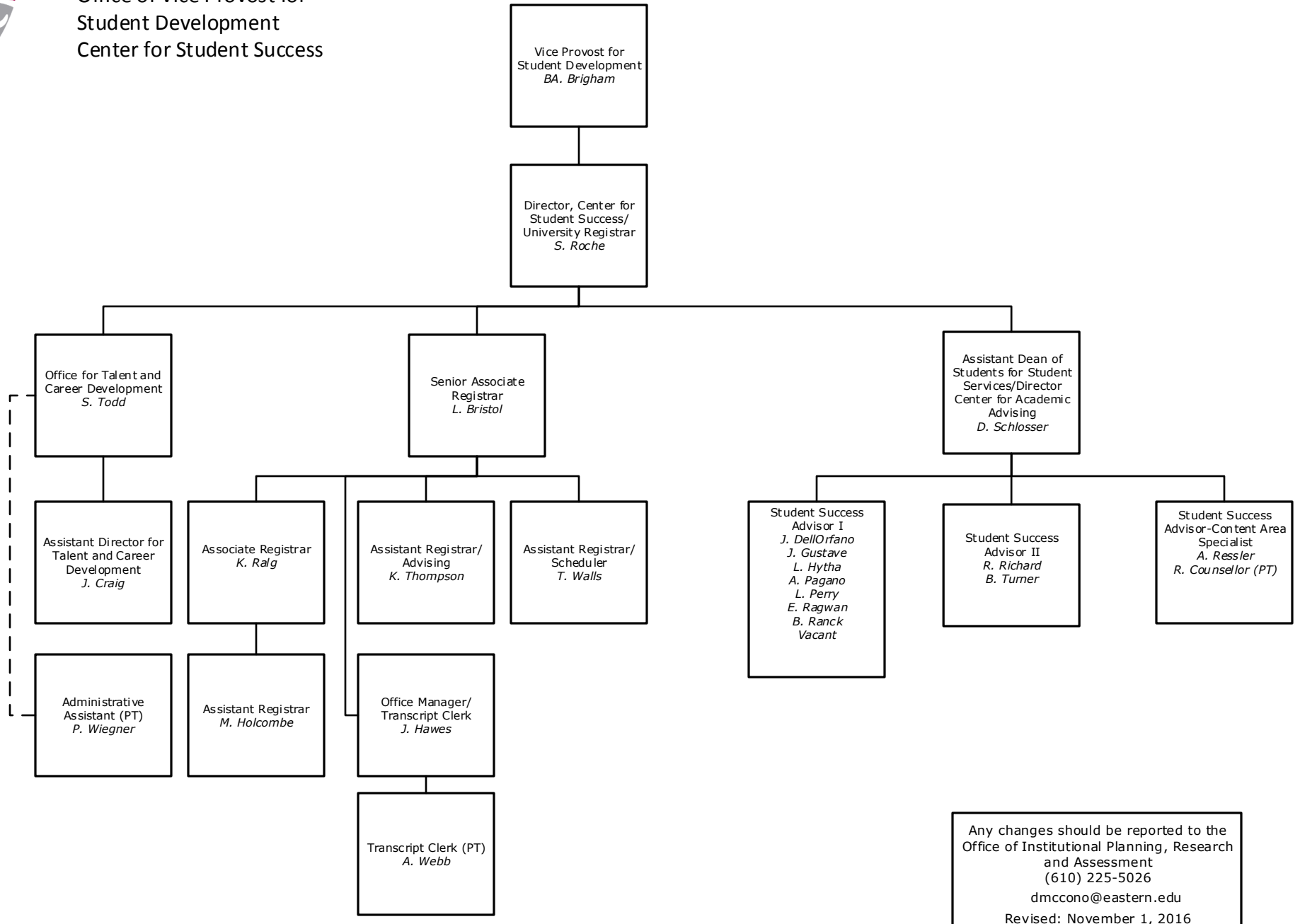


— Indicates a Direct Report  
- - - Indicates a Dual Report  
..... Indicates a Functional Report  
\* Position Reports Elsewhere

Any changes should be reported to the Office of Institutional Planning, Research and Assessment (610) 225-5026 dmcco@eastern.edu Revised: November 1, 2016



Division of Academic Affairs  
Office of Vice Provost for  
Student Development  
Center for Student Success

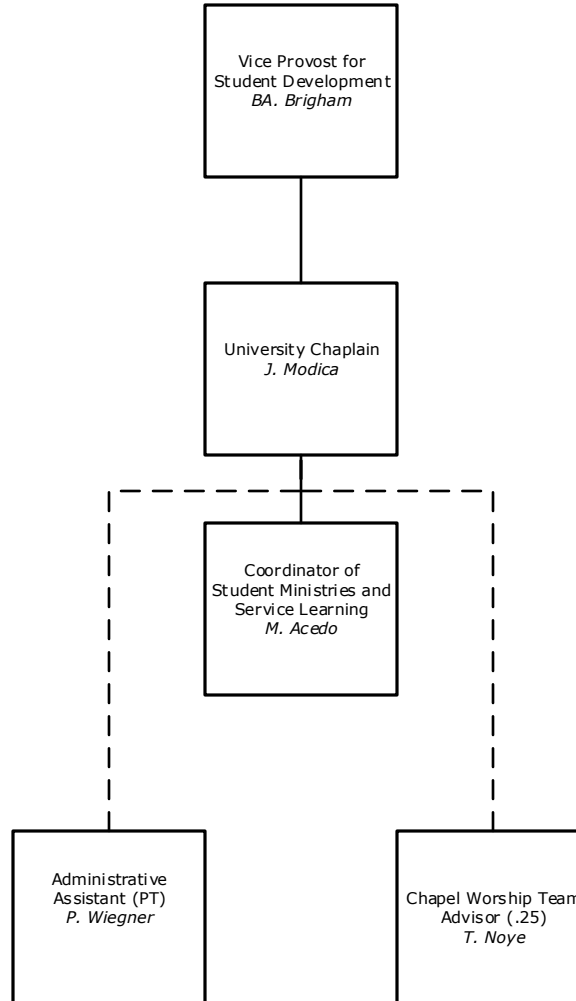


Any changes should be reported to the  
Office of Institutional Planning, Research  
and Assessment  
(610) 225-5026  
dmcco@eastern.edu  
Revised: November 1, 2016

————— Indicates a Direct Report  
- - - - - Indicates a Dual Report  
..... Indicates a Functional Report  
\* Position Reports Elsewhere



Division of Academic Affairs  
Office of the Vice Provost for Student  
Development  
Office of Faith and Practice

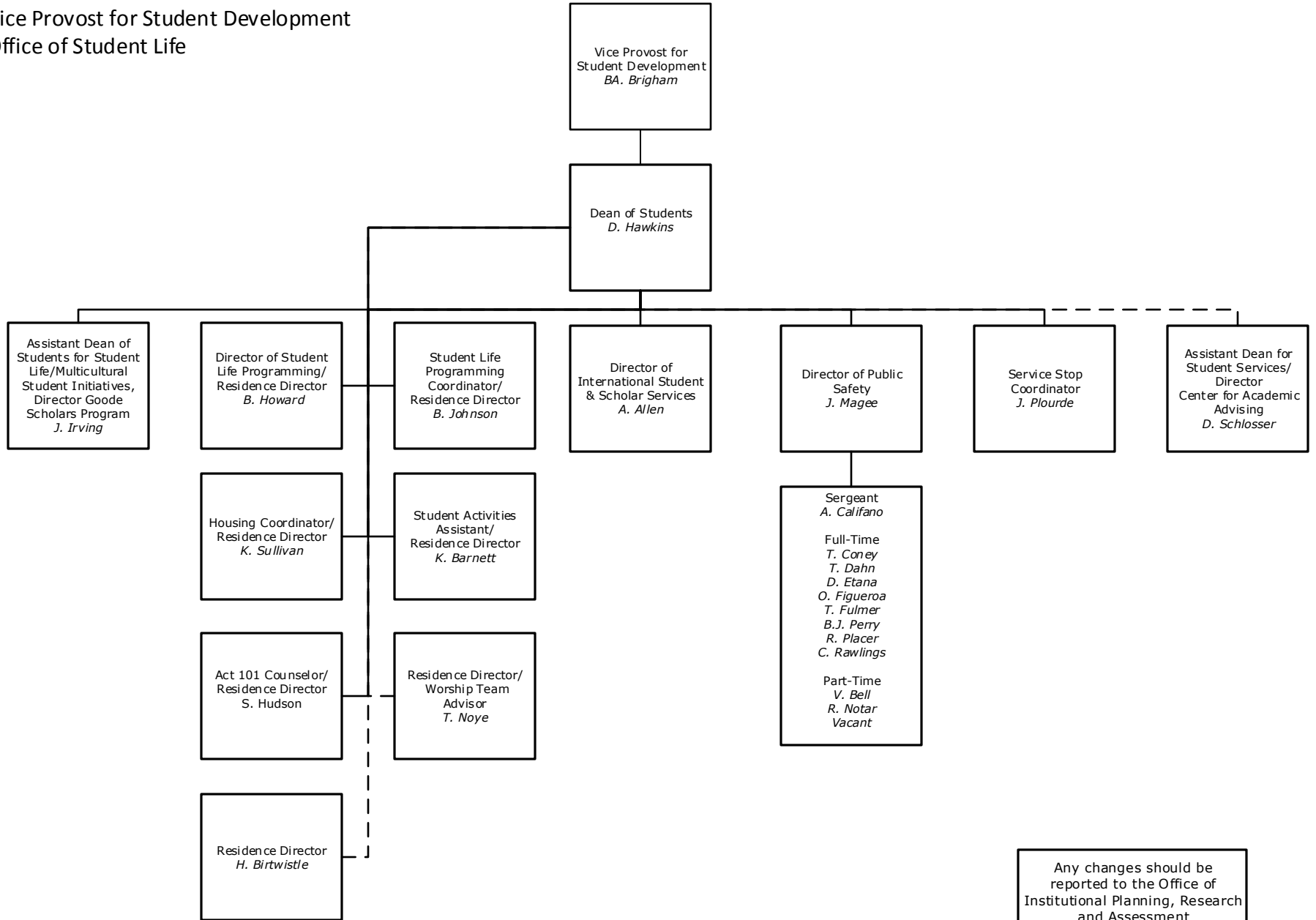


Any changes should be reported to the Office of Institutional Planning, Research and Assessment  
(610) 225-5026  
dmcono@eastern.edu  
Revised: November 1, 2016

- Indicates a Direct Report
- - - - - Indicates a Dual Report
- ..... Indicates a Functional Report
- \* Position Reports Elsewhere



Division of Academic Affairs  
 Vice Provost for Student Development  
 Office of Student Life

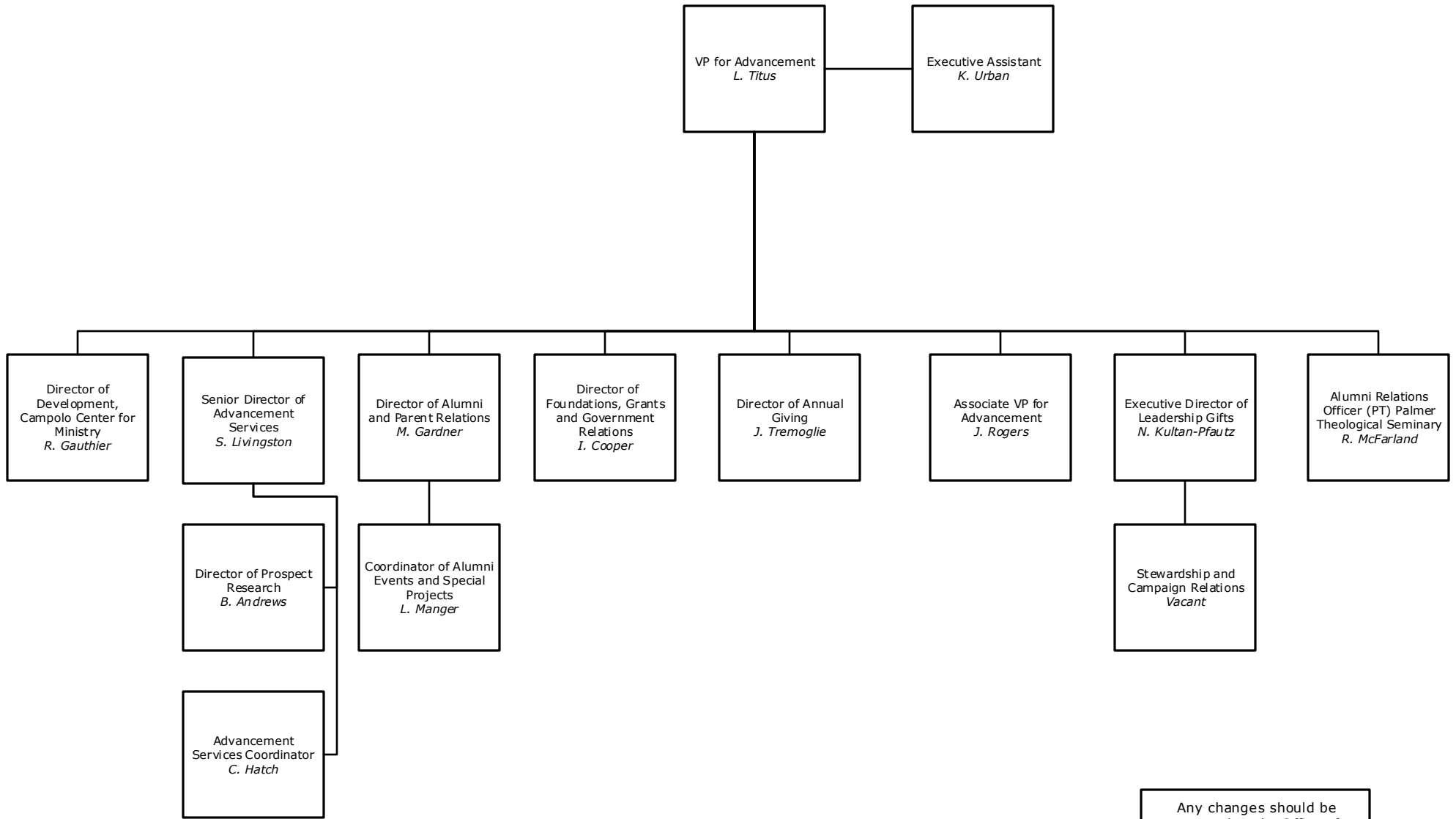


Any changes should be reported to the Office of Institutional Planning, Research and Assessment  
 (610) 225-5026  
 dmccono@eastern.edu  
 Revised: November 1, 2016

- Indicates a Direct Report
- - - - - Indicates a Dual Report
- ..... Indicates a Functional Report
- \* Position Reports Elsewhere



Division of Advancement  
Office of the Vice President for Advancement

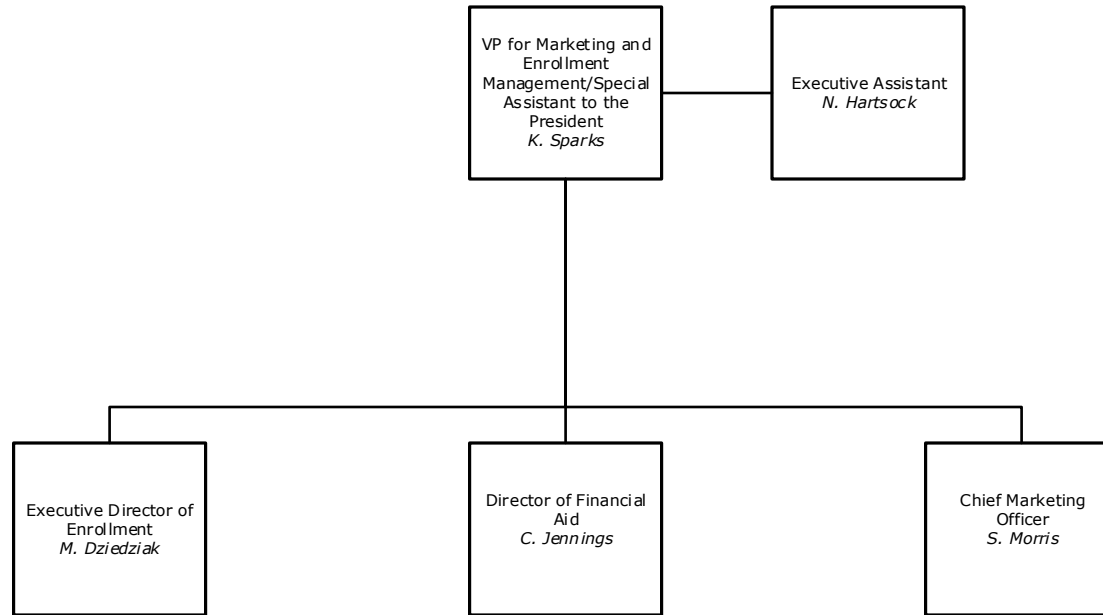


Any changes should be reported to the Office of Institutional Planning, Research and Assessment (610) 225-5026  
dmccono@eastern.edu  
Revised: November 1, 2016

- Indicates a Direct Report
- - - Indicates a Dual Report
- ..... Indicates a Functional Report
- \* Position Reports Elsewhere



Division of Marketing and Enrollment Management

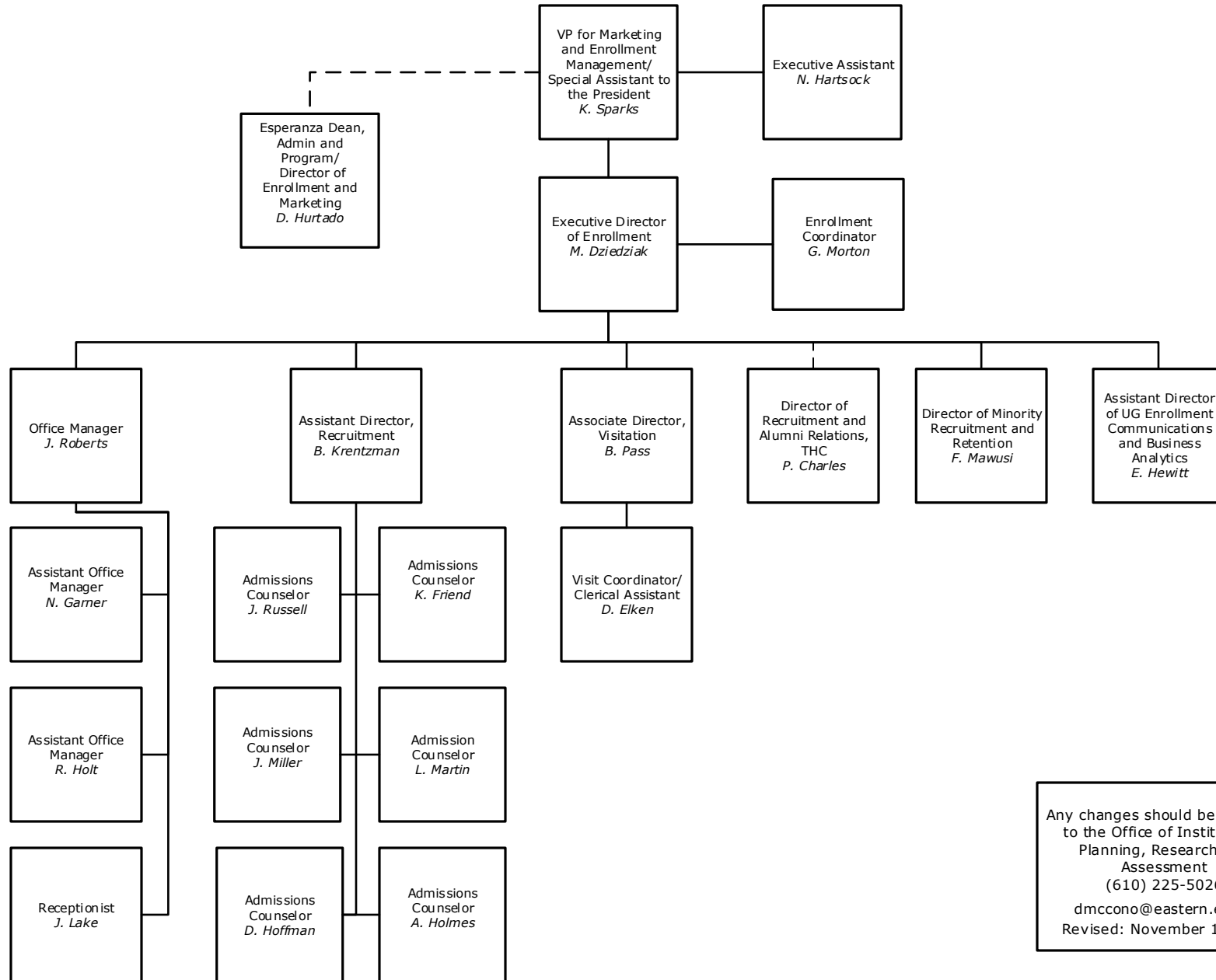


Any changes should be reported to the Office of Institutional Planning, Research and Assessment  
(610) 225-5026  
dmccono@eastern.edu  
Revised: November 1, 2016

— Indicates a Direct Report  
- - - Indicates a Dual Report  
..... Indicates a Functional Report  
\* Position Reports Elsewhere



Division of Marketing and Enrollment Management  
Office of Undergraduate Admissions

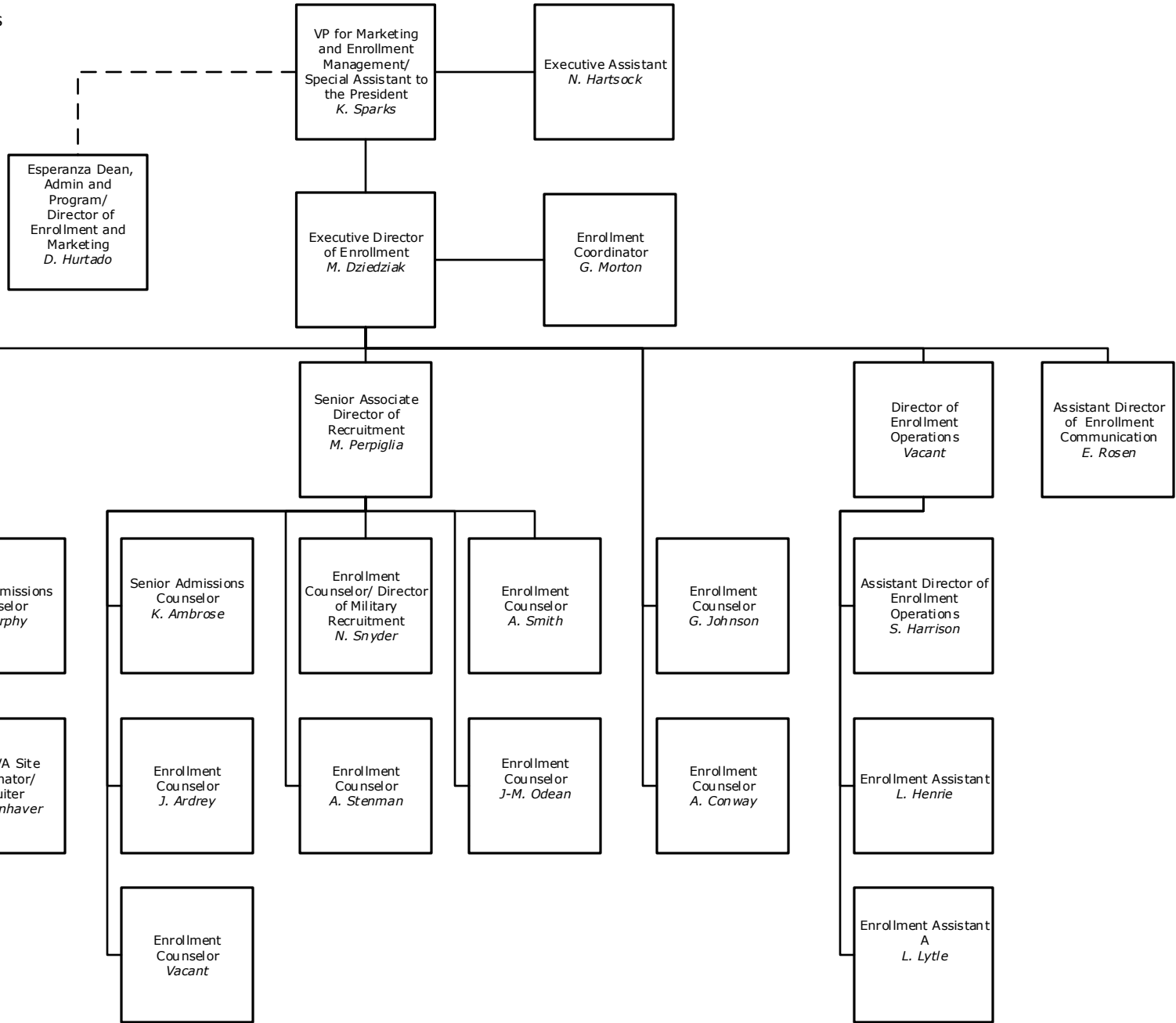


Any changes should be reported to the Office of Institutional Planning, Research and Assessment (610) 225-5026 dmccono@eastern.edu Revised: November 1, 2016

————— Indicates a Direct Report  
- - - - - Indicates a Dual Report  
..... Indicates a Functional Report  
\* Position Reports Elsewhere



Division of Marketing and Enrollment  
Management  
Office of GPS Admissions



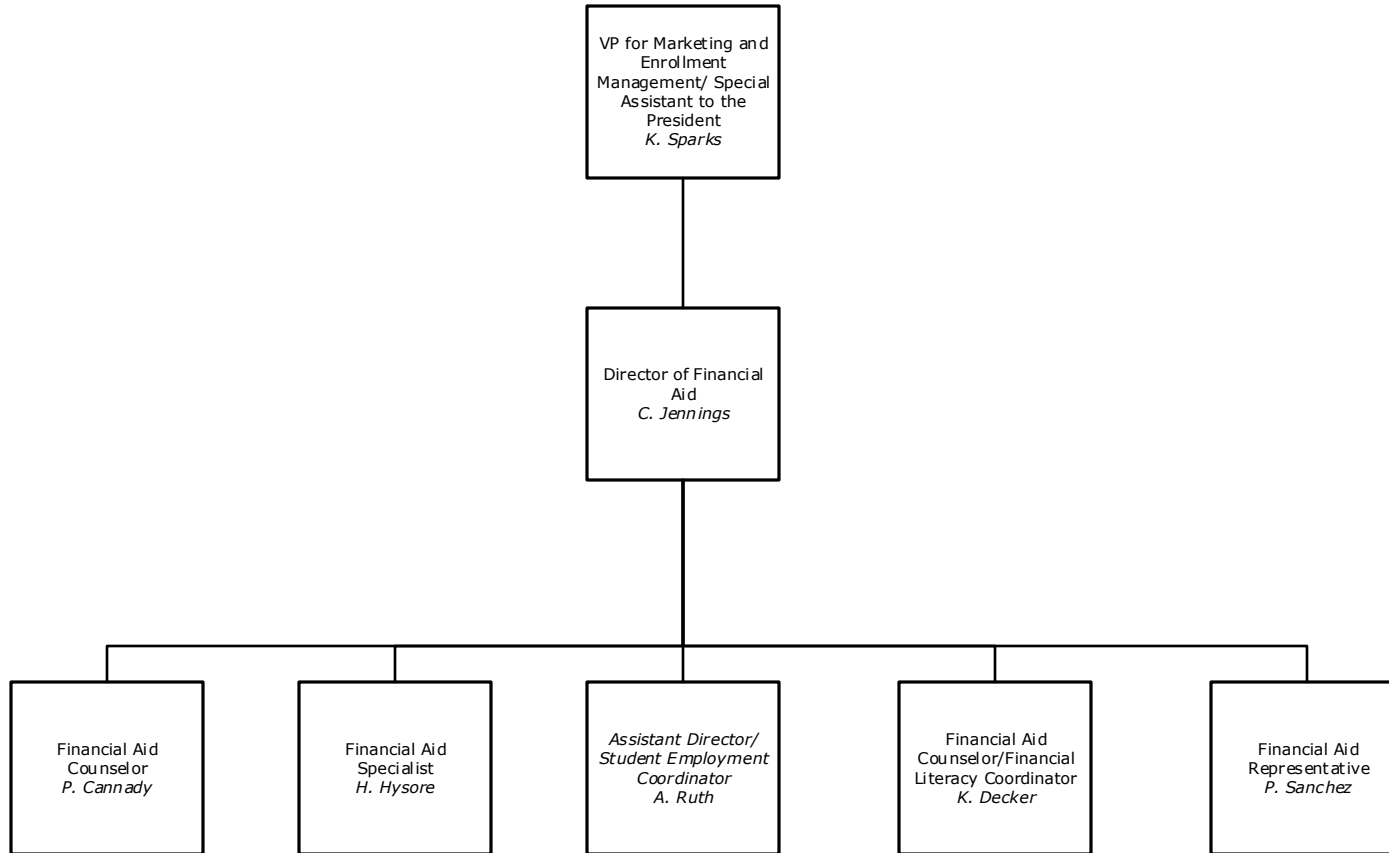
Any changes should be reported to the Office of Institutional Planning, Research and Assessment (610) 225-5026 dmcono@eastern.edu Revised: November 1, 2016

— Indicates a Direct Report  
 - - - Indicates a Dual Report  
 . . . . . Indicates a Functional Report  
 \* Position Reports Elsewhere



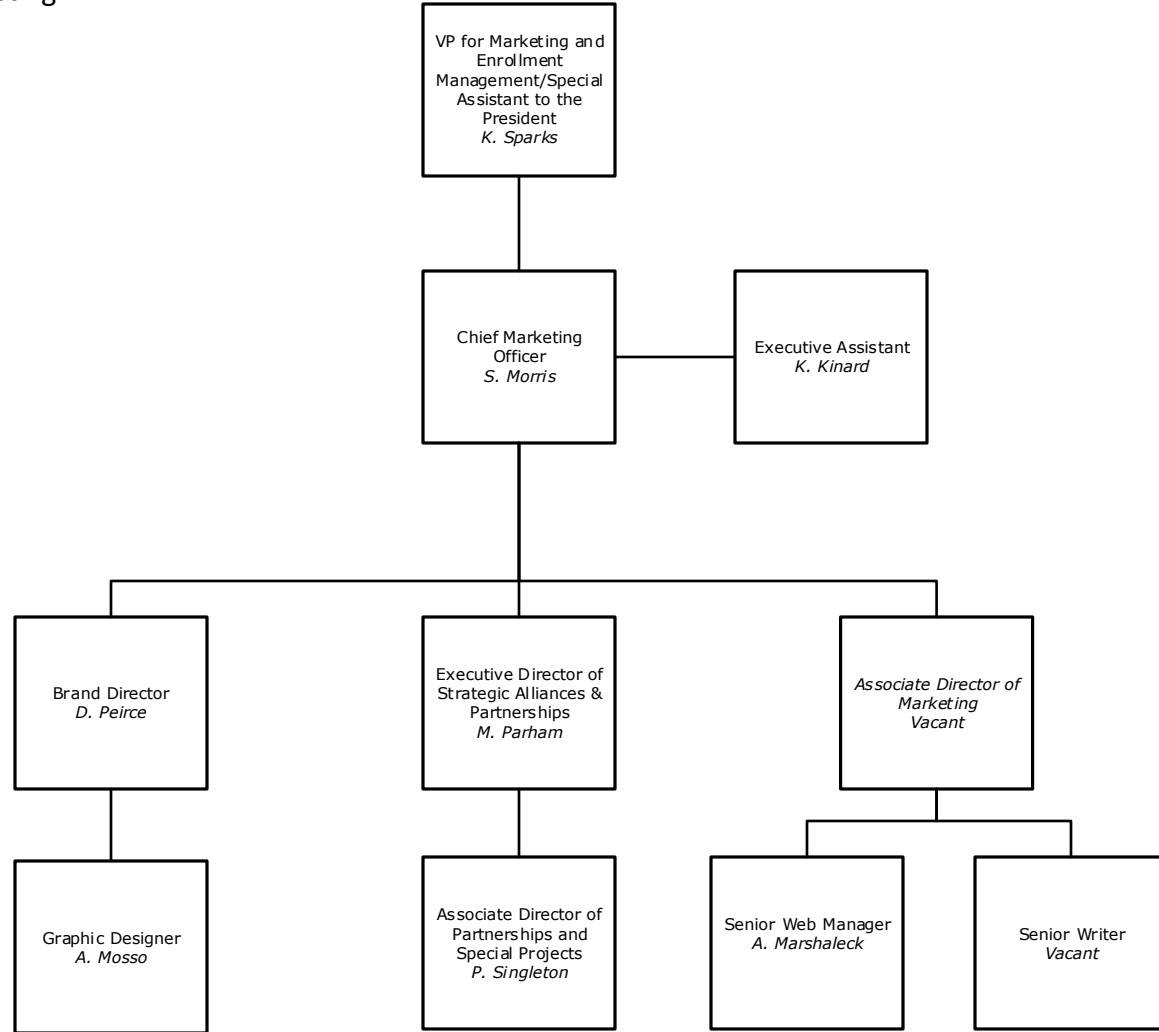


Division of Marketing and Enrollment Management  
Office of Financial Aid



Any changes should be reported to the Office of Institutional Planning, Research and Assessment  
(610) 225-5026  
dmccono@eastern.edu  
Revised: November 1, 2016

————— Indicates a Direct Report  
- - - - - Indicates a Dual Report  
..... Indicates a Functional Report  
\* Position Reports Elsewhere

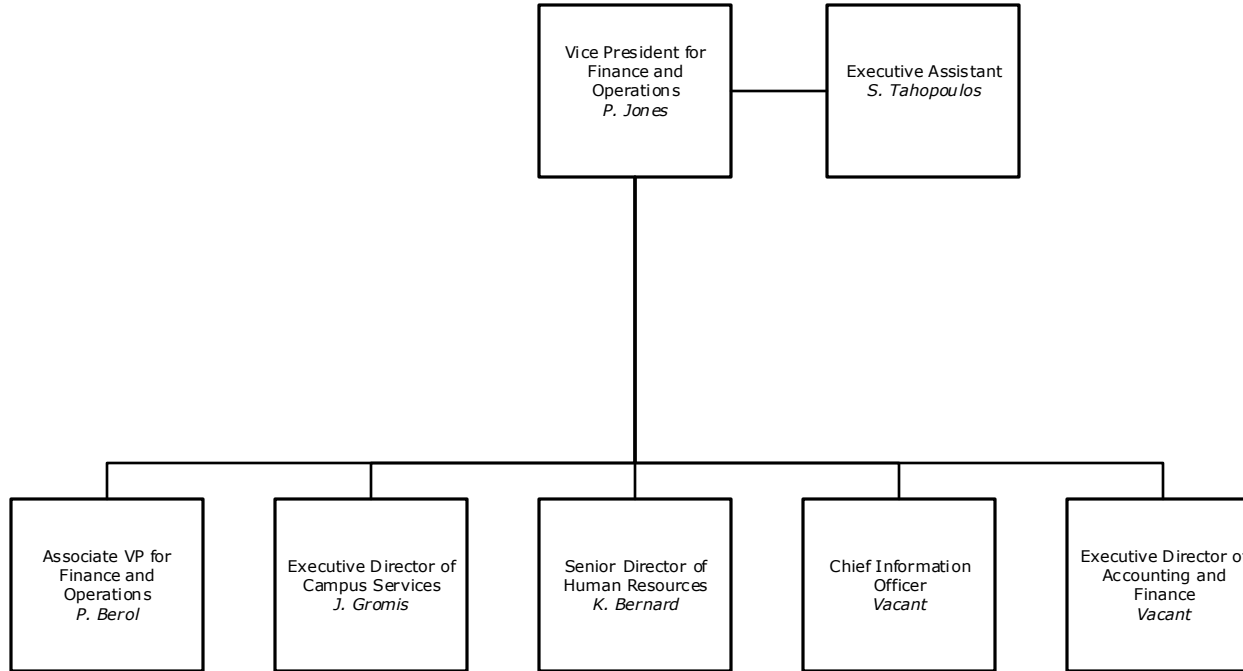


Any changes should be reported to the Office of Institutional Planning, Research and Assessment (610) 225-5026 dmcco@eastern.edu Revised: November 1, 2016

— Indicates a Direct Report  
- - - Indicates a Dual Report  
..... Indicates a Functional Report  
\* Position Reports Elsewhere



Division of Finance and Operations  
Office of the Vice President for Finance and  
Operations

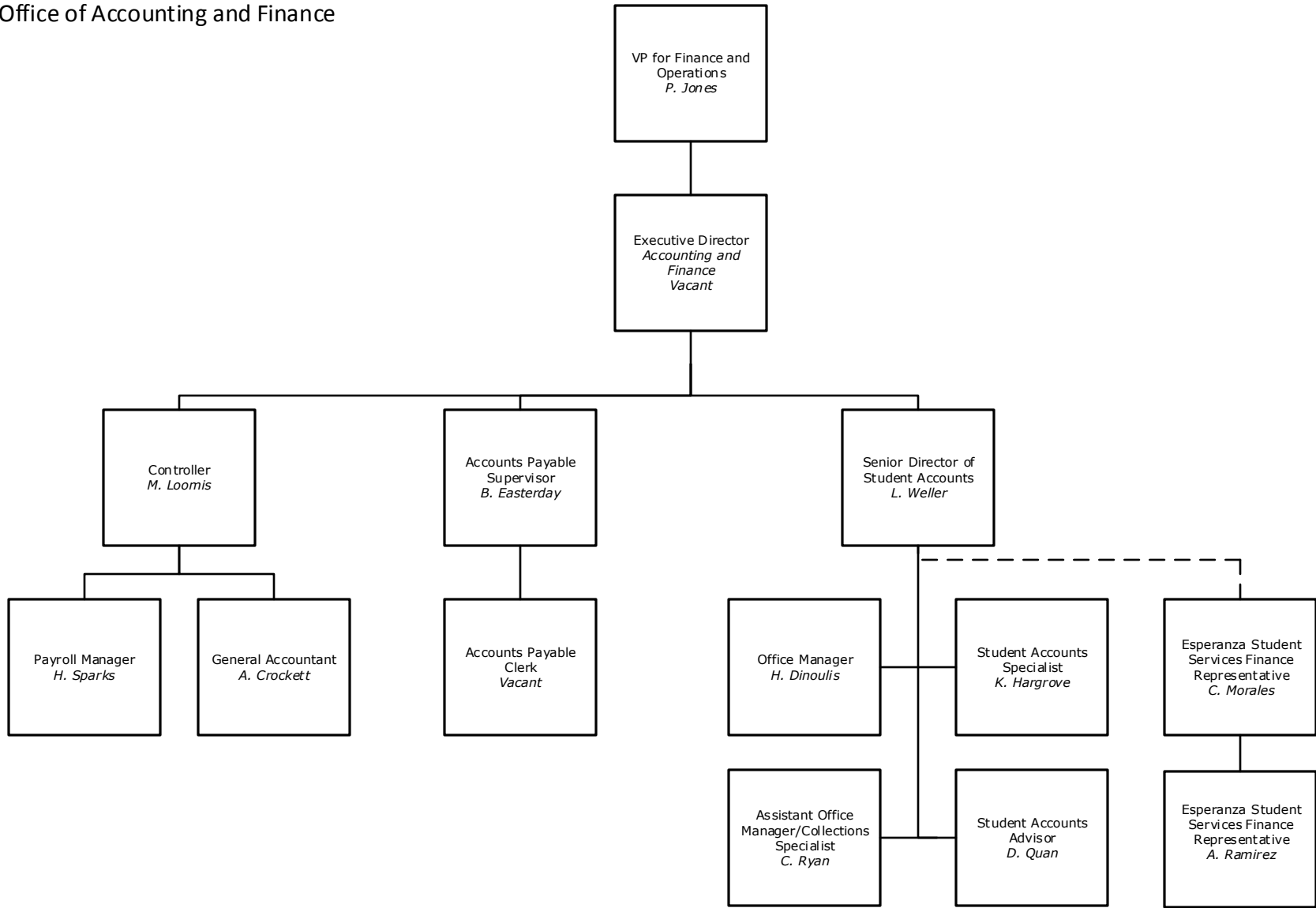


Any changes should be reported to the Office of Institutional Planning, Research and Assessment  
(610) 225-5026  
dmcono@eastern.edu  
Revised: November 1, 2016

— Indicates a Direct Report  
- - - Indicates a Dual Report  
..... Indicates a Functional Report  
\* Position Reports Elsewhere



Division of Finance and Operations  
Office of Accounting and Finance

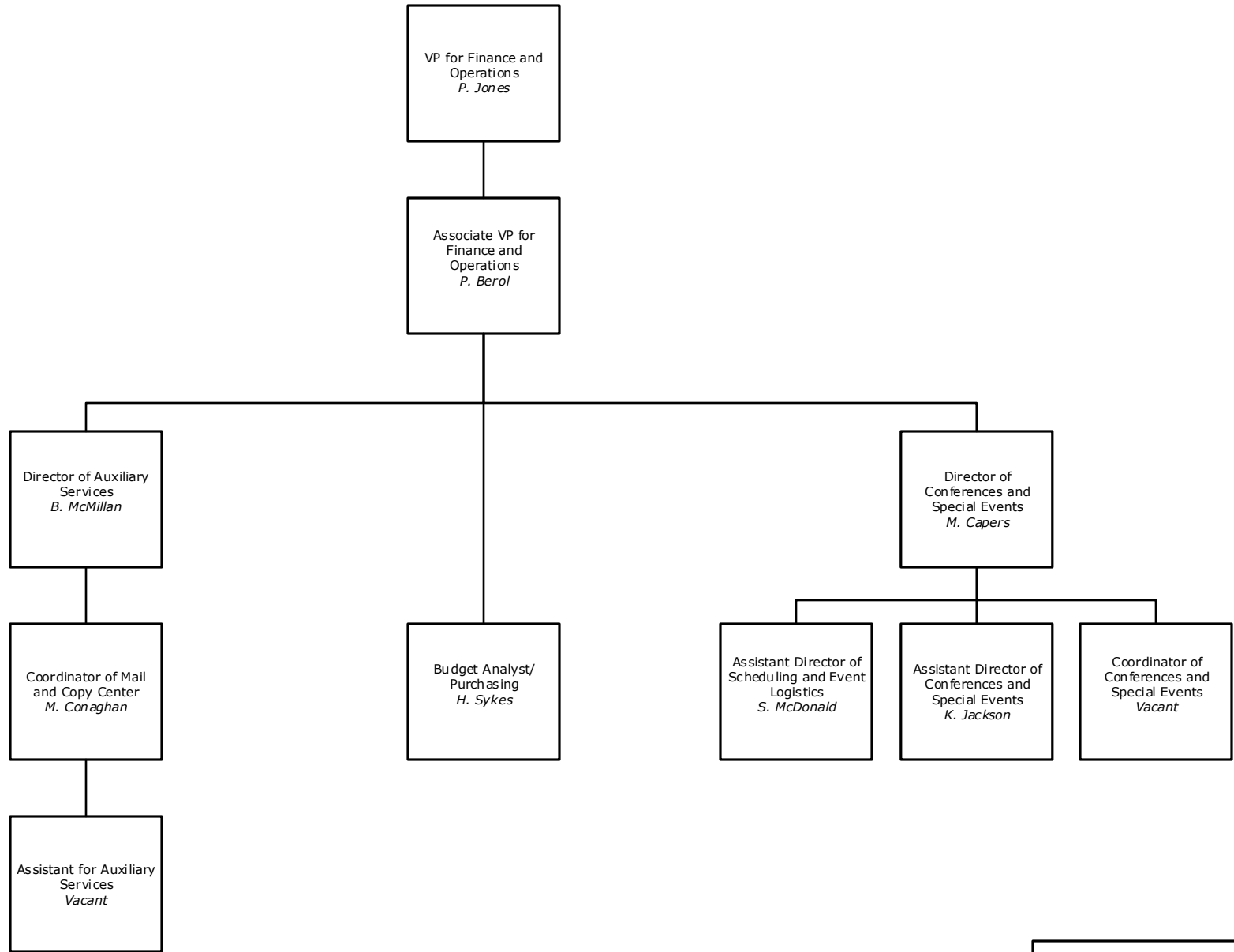


— Indicates a Direct Report  
- - - Indicates a Dual Report  
..... Indicates a Functional Report  
\* Position Reports Elsewhere

Any changes should be reported to the Office of Institutional Planning, Research and Assessment  
(610) 225-5026  
dmccono@eastern.edu  
Revised: November 1, 2016



Division of Finance and Operations  
Office of Associate VP for Finance and  
Operations

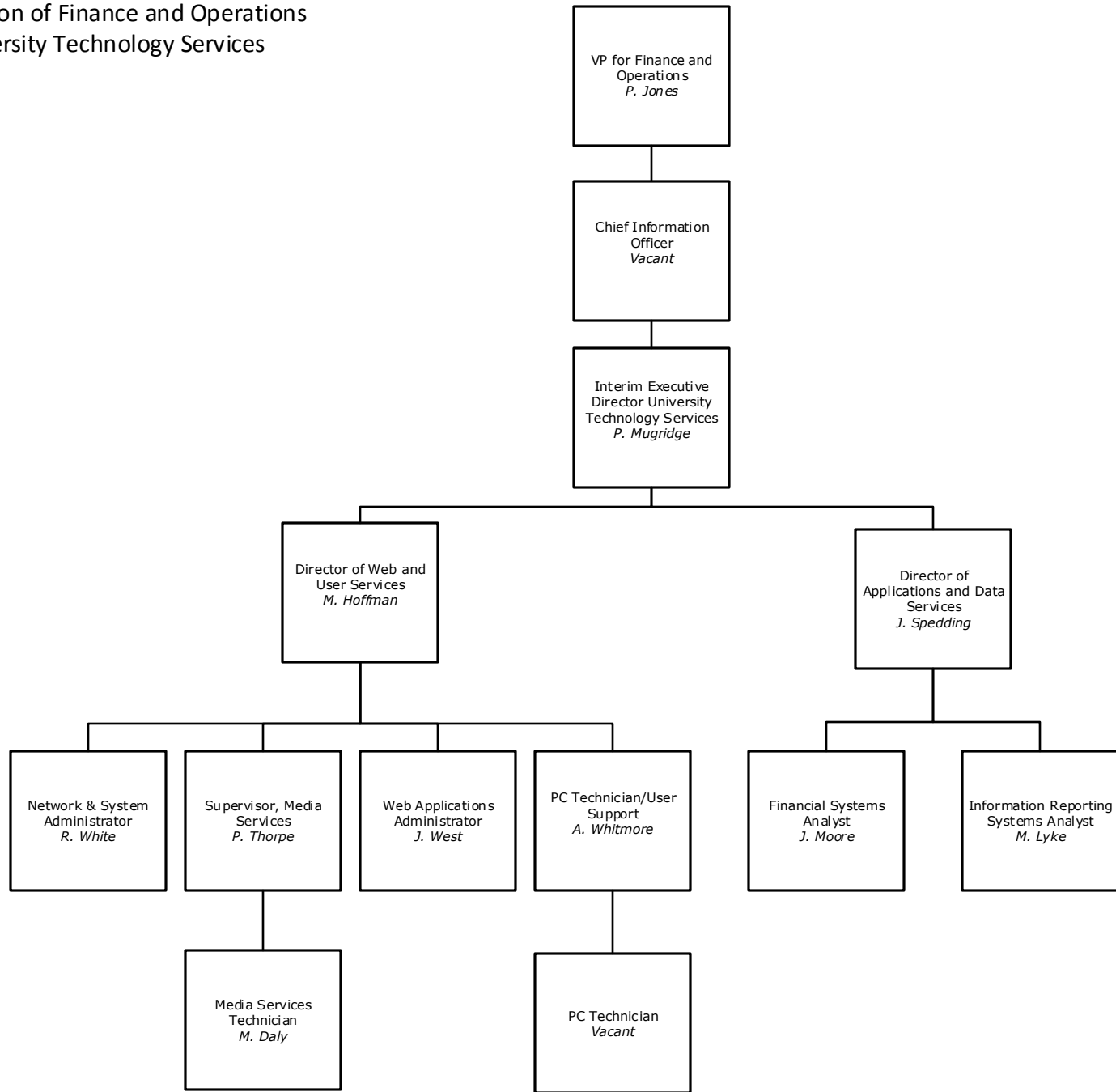


————— Indicates a Direct Report  
- - - - - Indicates a Dual Report  
..... Indicates a Functional Report  
\* Position Reports Elsewhere

Any changes should be reported to the Office of Institutional Planning, Research and Assessment (610) 225-5026 dmccono@eastern.edu Revised: November 1, 2016



Division of Finance and Operations  
University Technology Services

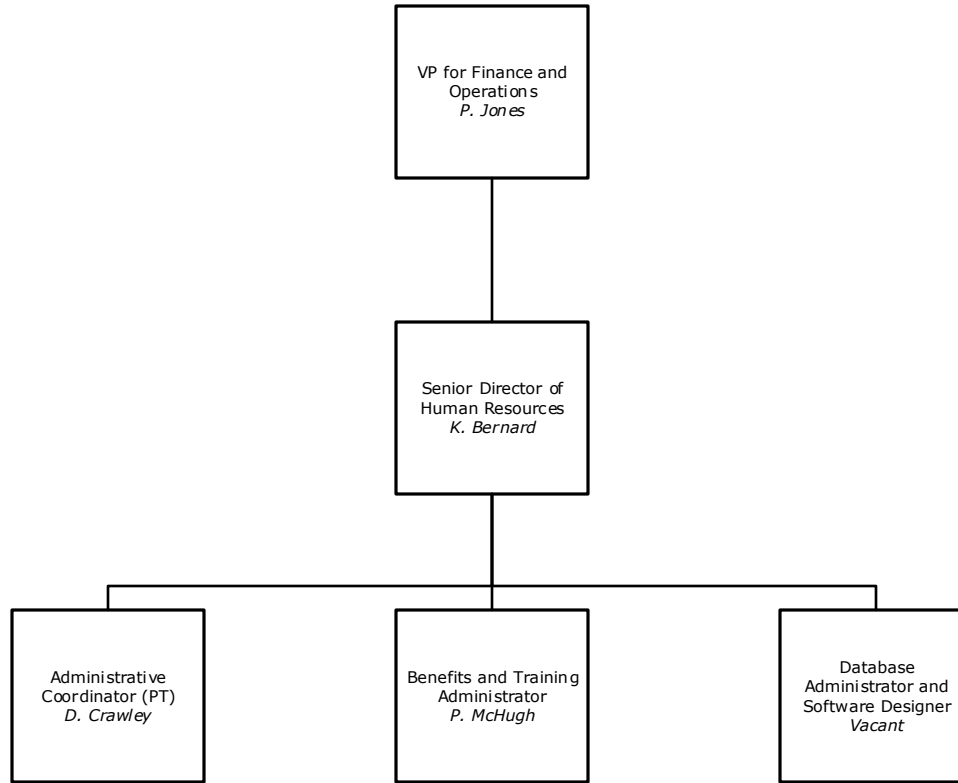


Any changes should be reported to the Office of Institutional Planning, Research and Assessment (610) 225-5026 dmccono@eastern.edu Revised: November 1, 2016

— Indicates a Direct Report  
- - - - - Indicates a Dual Report  
· · · · · Indicates a Functional Report  
\* Position Reports Elsewhere



Division of Finance and Operations  
Office of Human Resources

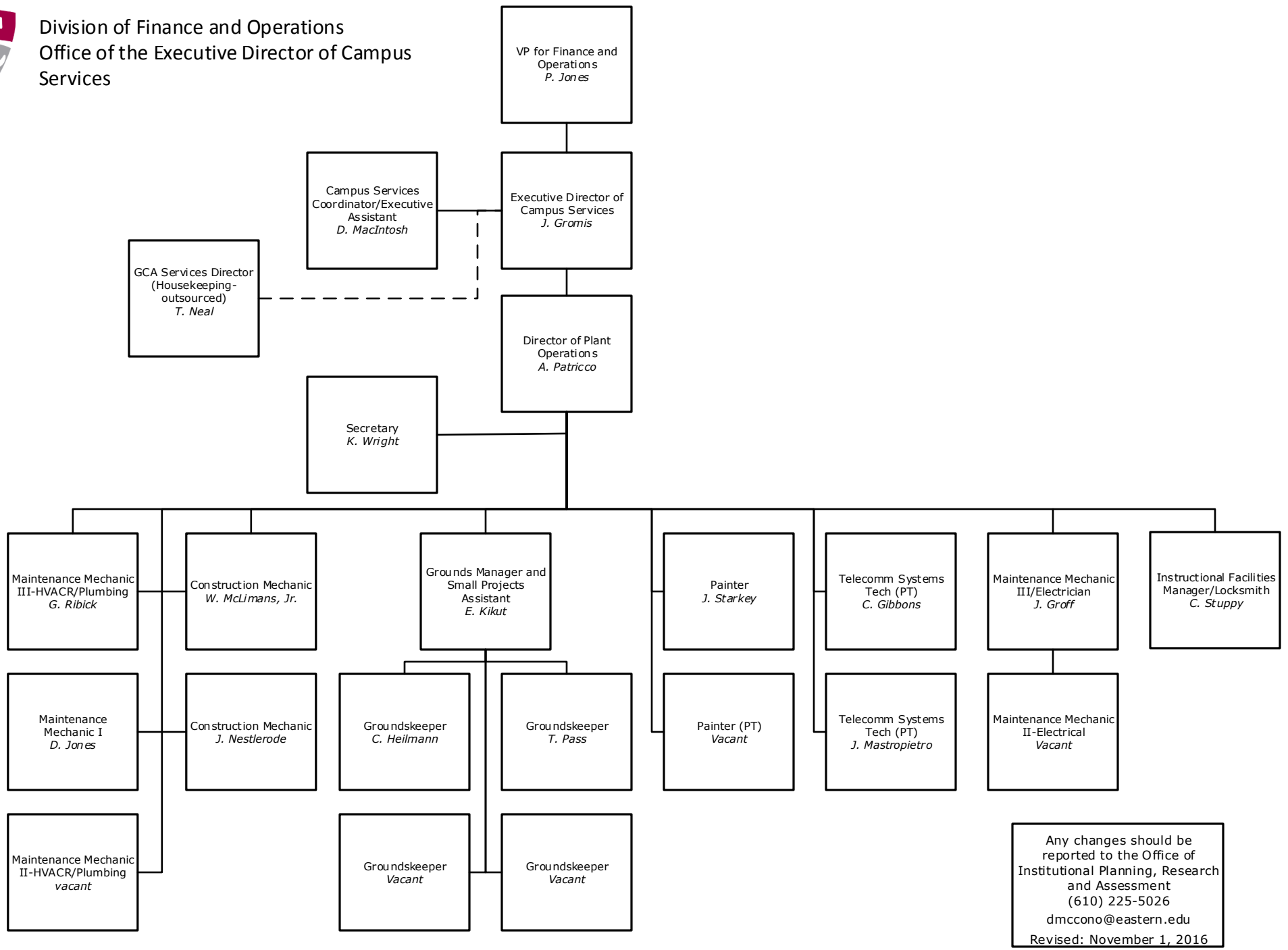


Any changes should be reported to the Office of Institutional Planning, Research and Assessment  
(610) 225-5026  
dmccono@eastern.edu  
Revised: November 1, 2016

————— Indicates a Direct Report  
- - - - - Indicates a Dual Report  
· · · · · Indicates a Functional Report  
\* Position Reports Elsewhere



Division of Finance and Operations  
Office of the Executive Director of Campus Services



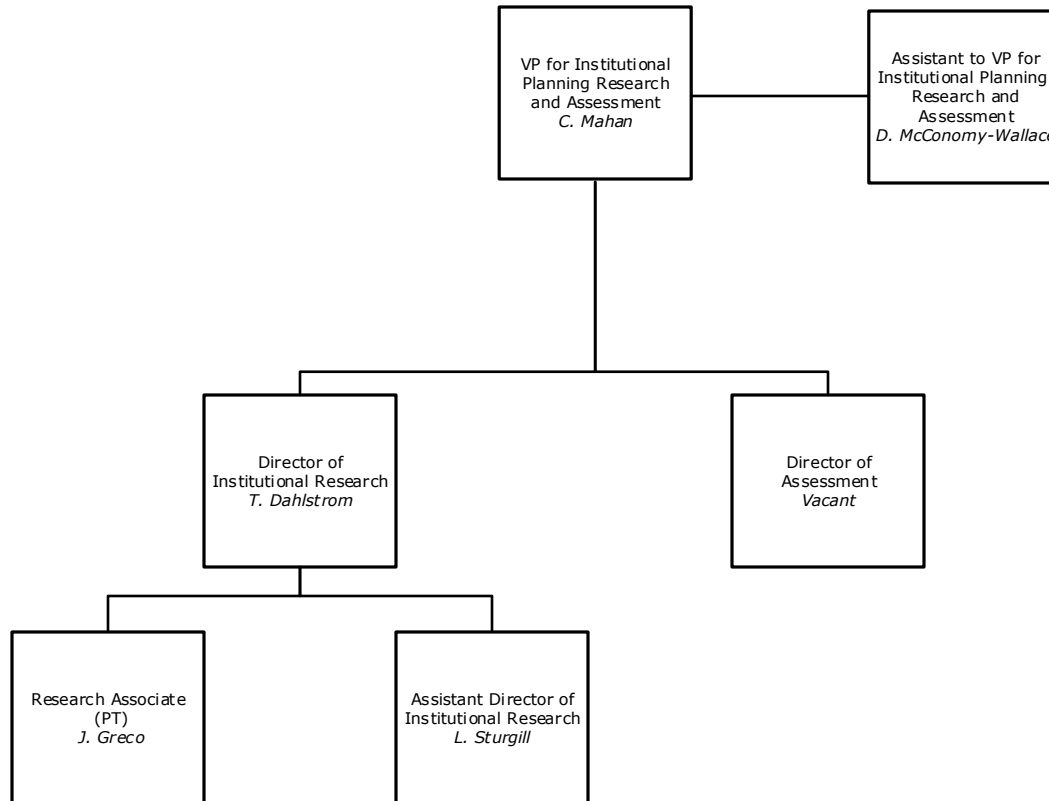
Any changes should be reported to the Office of Institutional Planning, Research and Assessment (610) 225-5026 dmccono@eastern.edu Revised: November 1, 2016

- Indicates a Direct Report
- - - Indicates a Dual Report
- ..... Indicates a Functional Report
- \* Position Reports Elsewhere





Division of Institutional Planning, Research  
and Assessment  
Office of the Vice President for  
Institutional Planning, Research and  
Assessment



Any changes should be reported to the Office of Institutional Planning, Research and Assessment (610) 225-5026 dmccono@eastern.edu Revised: November 1, 2016

— Indicates a Direct Report  
- - - Indicates a Dual Report  
..... Indicates a Functional Report  
\* Position Reports Elsewhere