



EASTERN UNIVERSITY

DATA PULSE

2023 FALL 2

FROM THE PROGRAM DIRECTOR

In recent weeks, I have found myself reflecting more and more on the concept of *job readiness*. There are three aspects to my reflection. The first is the curricular experience our program provides, and the second is the rapidly changing job environment, especially with the impact of AI. From our side, I'm really excited about announcements coming out in the next weeks and months. We take to heart the great feedback you all provide, and I think you'll be quite happy with what we will have to share!

However, my main focus hangs on the third portion of my reflection: *what does it require from students?* In my efforts to make sure we're preparing you to be competitive applicants, I've had many conversations with employers and hiring managers. Although they certainly want technically capable employees, one recurring theme is they are looking for candidates who are *adaptable, creative, and love to learn*.

I can't tell you the number of times I've heard concerns over tech-savvy candidates who struggle to communicate with non-technical audiences. Or how many applicants emphasize the number of programming languages on the resume yet seem apprehensive when faced with something outside their comfort zone.

All this to say while I understand you are concerned with your coding assignments (like passing Halloween Candy in 580!), I encourage you to step back and see the bigger picture. It's important to not only do the work but to develop yourself beyond the technical skills our program teaches. Remember, all education is a springboard *toward future learning*. Given how much the workplace could be disrupted in the coming years, you need to equip yourself with a mindset that extends beyond the assignments and quizzes and harnesses the diverse set of skills needed in this ever-changing job landscape.

DR. GREG LONGO, PROGRAM DIRECTOR



COURSE ASSISTANT SPOTLIGHT

How long have you been a GA/AA?

This is my first term as an AA for DTSC 650, but I was a GA for four terms beforehand.

What are some pros and cons of being a GA? Tells a little about your experience.

One pro of being a GA is the ability to help fellow students in the program while keeping your skills in the languages you are working with up to speed. One con is, since you are still learning about your subject, you may not always have all the answers ready for students.

What's your academic and career background?

I hold a Bachelor's in International Relations and Master's degrees in Instructional Design, Elementary Education, and now Data Science. I have been in education for almost my entire career, working as an adult ESL instructor, curriculum/instructional developer for an ESL and corporate training firm, elementary school teacher, and, currently, High School Special Ed Teacher.

As a recent graduate, what was your favorite class and why?

My two favorite classes were 650 and 660. I really enjoy both R and SQL, and while both these classes were a challenge, they were also two of the most rewarding.

Any advice for students in the program?

Always ask questions, take frequent breaks from coding, and never give up!



Robert Pleva
AA for DTSC-650

Fun facts:

- I live in Western New York State but am originally from New Jersey.
- I have also lived in small-town Japan and Toronto.
- I am a foreign language enthusiast. The language I probably speak the best is Russian (though I'm slightly out of practice).
- I collect stamps and foreign currency.
- I love taking road trips and reading.

EU VIRTUAL EVENTS

Were you unable to attend our recent Live Events on Artificial Intelligence?
You won't want to miss the recordings available now!

SCIENCE AND RELIGION SYMPOSIUM: AI & HUMAN SPIRITUALITY

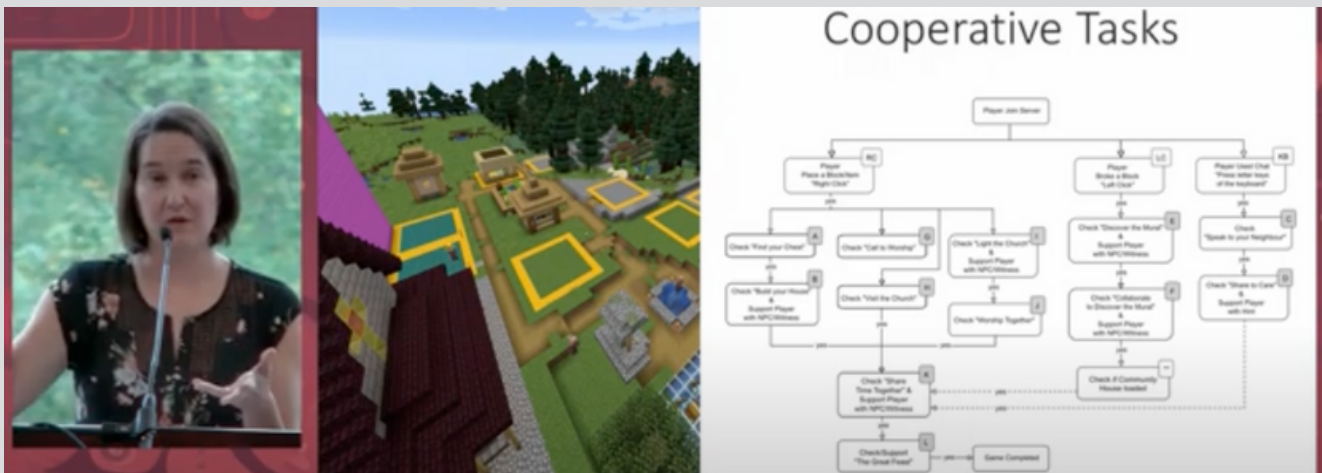
In September we explored the intersection of AI and Human Spirituality at the Palmer Seminary Science and Religion Symposium. The symposium was divided into two parts. The first part features a panel discussion led by Dr. Greg Longo, Prof. Amy Huddell, and Rev. Andre Price, where they provide expert insights on the impact of AI in all aspects of our lives.

[Click Here to watch the Panel Discussion](#)

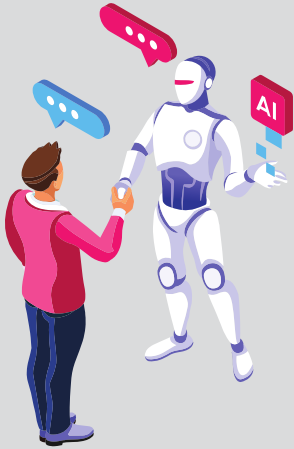


Rev. Dr. Erin Raffety then presented her fascinating research around the question, "Can machine intelligence be used to enhance the spiritual lives of disabled persons?" For the research, her team created a Minecraft-like video game for players to interact and fellowship together.

[Click Here to watch the Presentation](#)



MSDS HOMECOMING FORUM: AI IN ED & THE WORKPLACE



During Eastern's Homecoming week, our Data Science team hosted a discussion forum for faculty and students around AI in Education and the Workplace. Dr. Longo and Dr. Walt Huddell led us in questions on what is Intelligence, what threats AI poses, and how experts in the field are reacting.

**You can watch the recording
on the MSDS Brightspace Page here.**

WELCOME NEW STAFF!

- **Daniel Chan, 520 GA**
- **Alan Harrington, 520 GA**
- **Sarah Simpson, 520 GA**
- **Natalia Ayala, 600 GA**
- **Leonardo Suarez, 660 GA**
- **Denise Nelson, 670 GA**
- **William Caban, 685 FTA**

CONGRATULATIONS!



Laura Thapa:
Promoted to
*Academic
Quality Specialist*

REMINDERS

Term Dates

- FA2 ends Dec. 10th at 11:59 pm ET
 - Grades posted within 1 - 2 weeks
- Last day of FA2 and withdraw without academic penalty
 - Dec. 10th by 5:00 pm ET
- SP1 begins Jan. 8th

Ready to Graduate?

- Complete the [Graduation Application](#) during your final term

Number of Current Students: 2,934

Number of New Students for FA2: 432

Avoiding Scams: Tips from EU's CIO

FAITH AND COUNSELING

Counseling and Crisis Services

Services through Uwill are available to all students and include 24/7/365 crisis support.

- **[Click here for the Uwill website](#)**
- **[See the Uwill FAQ](#)**
- **Uwill Crisis Line:** 833-646-1526 (outside the US, Canada and Caribbean call +1-984-268-2016)

EU Chapel Livestream:

- **[Click here to view live and recordings](#)**
- **[Chapel Schedule](#)**

University Chaplain: [Dr. Joseph Modica](#)

Contact Us:

Advising Questions: dsadvising@eastern.edu
Fees and Billing: student.accounts@eastern.edu
General Questions: datascience@eastern.edu

Find Us on Social Media:

