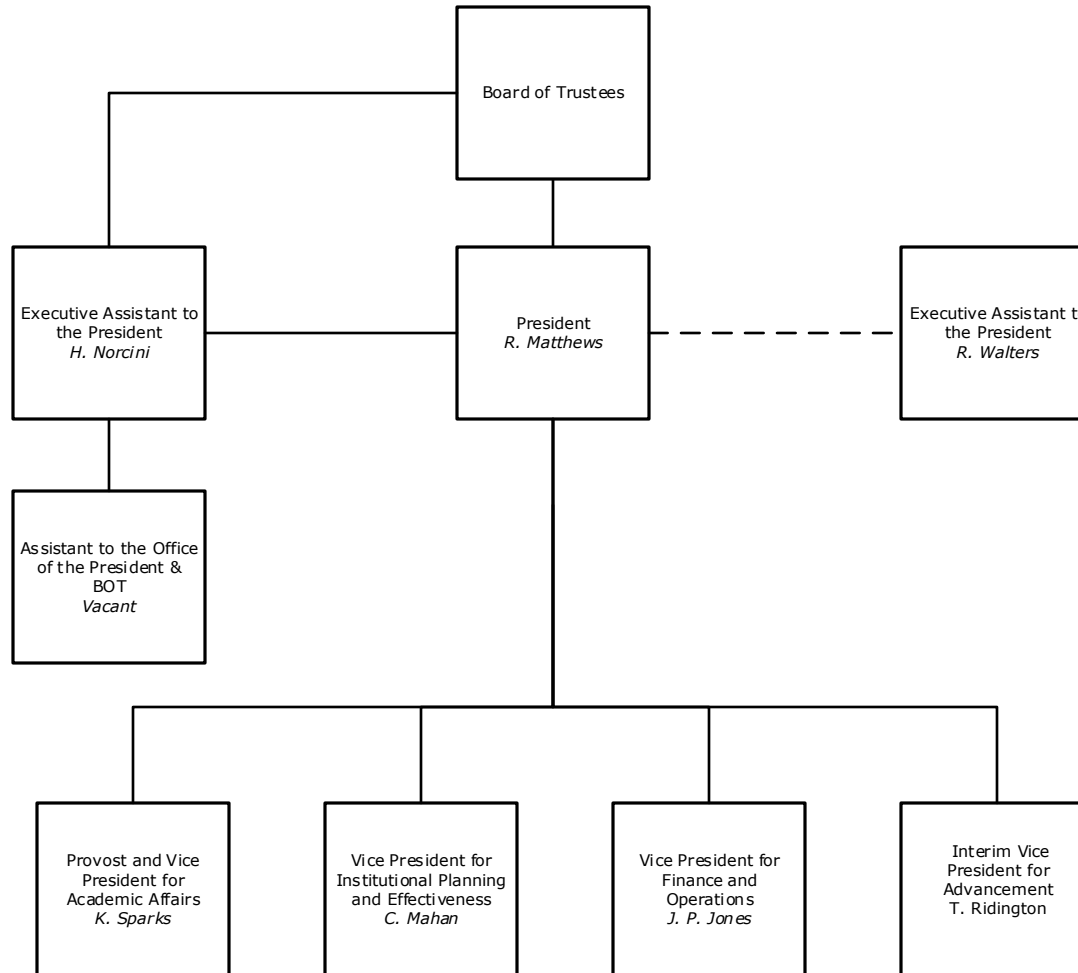


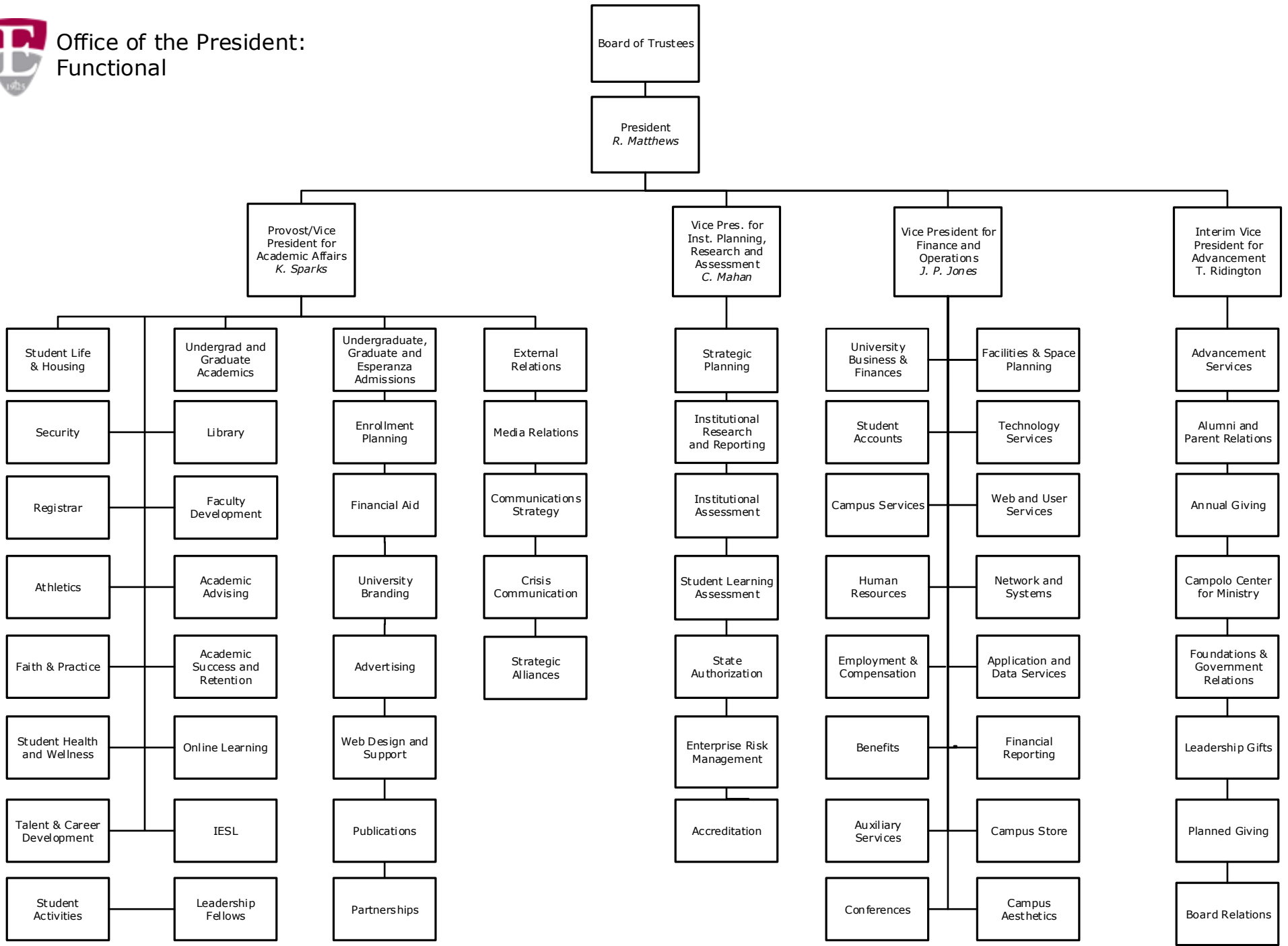


Eastern University
Office of the President



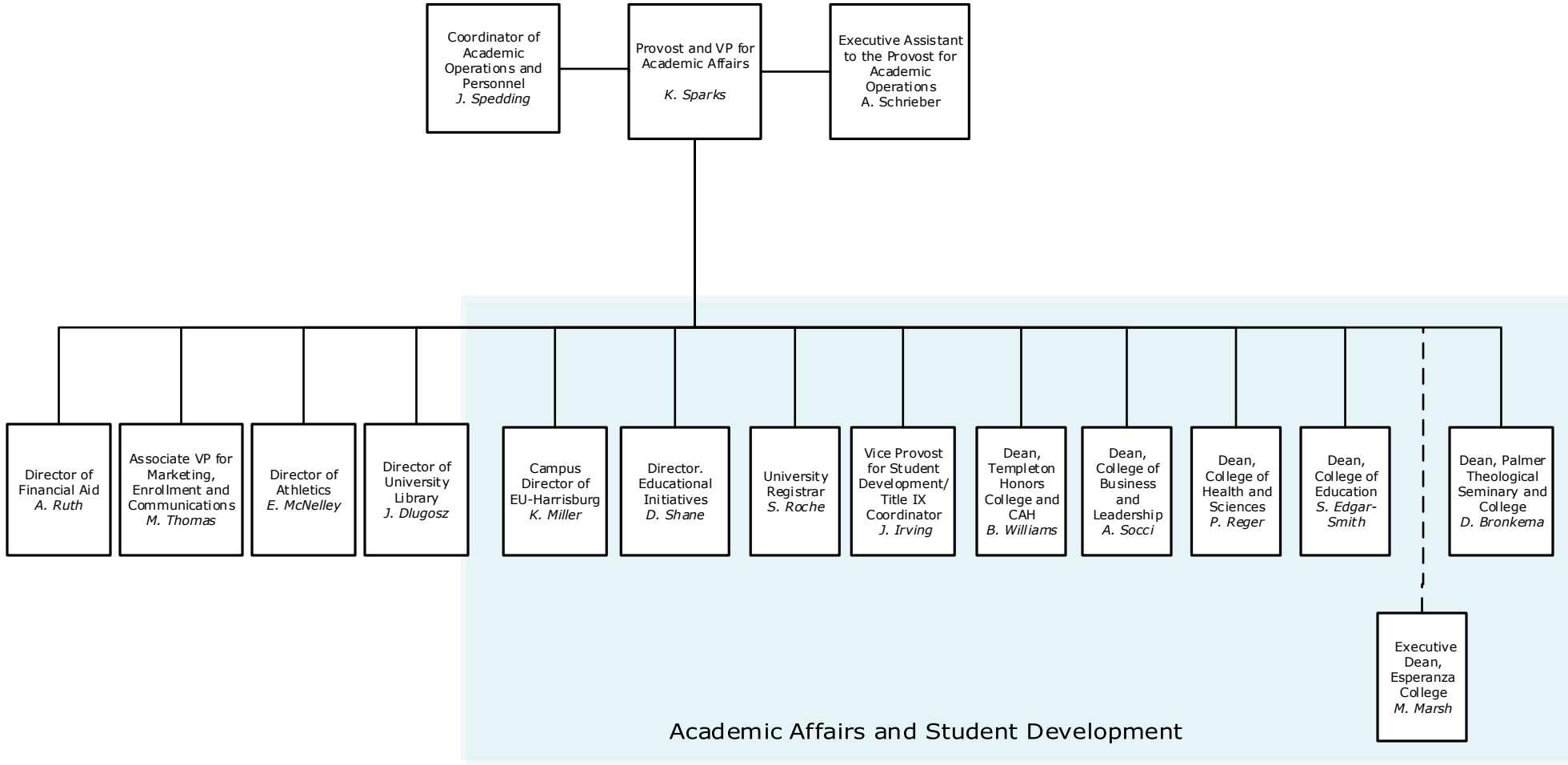


Office of the President:
Functional





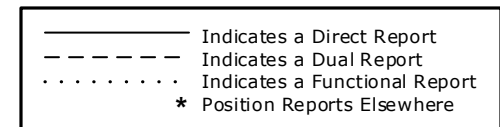
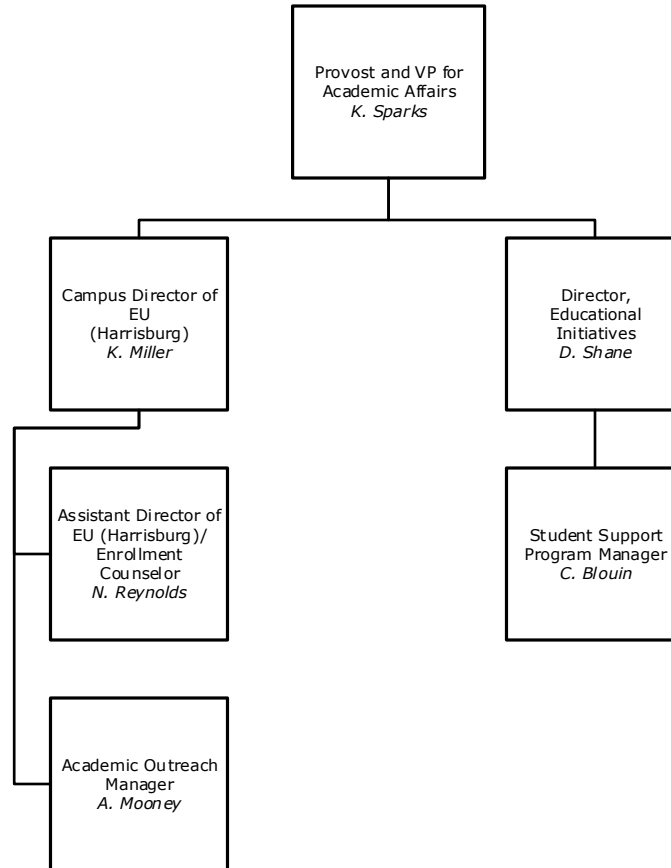
Office of the Provost and VP for Academic Affairs



————— Indicates a Direct Report
- - - - - Indicates a Dual Report
..... Indicates a Functional Report
* Position Reports Elsewhere

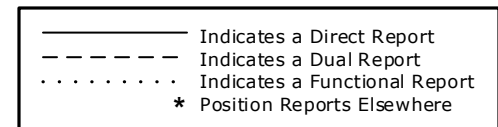
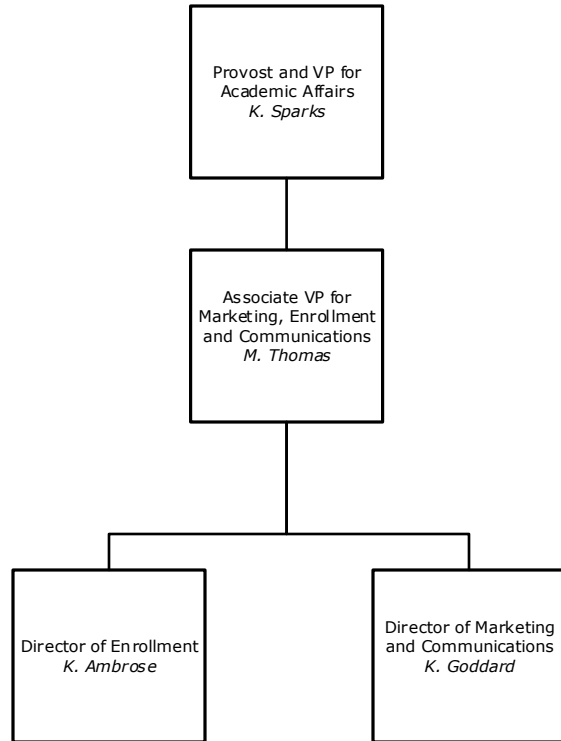


Office of the Provost and Vice President
for Academic Affairs
EU Harrisburg and Philadelphia



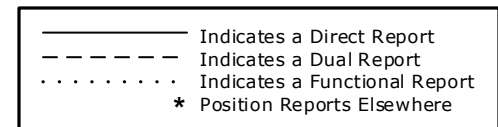
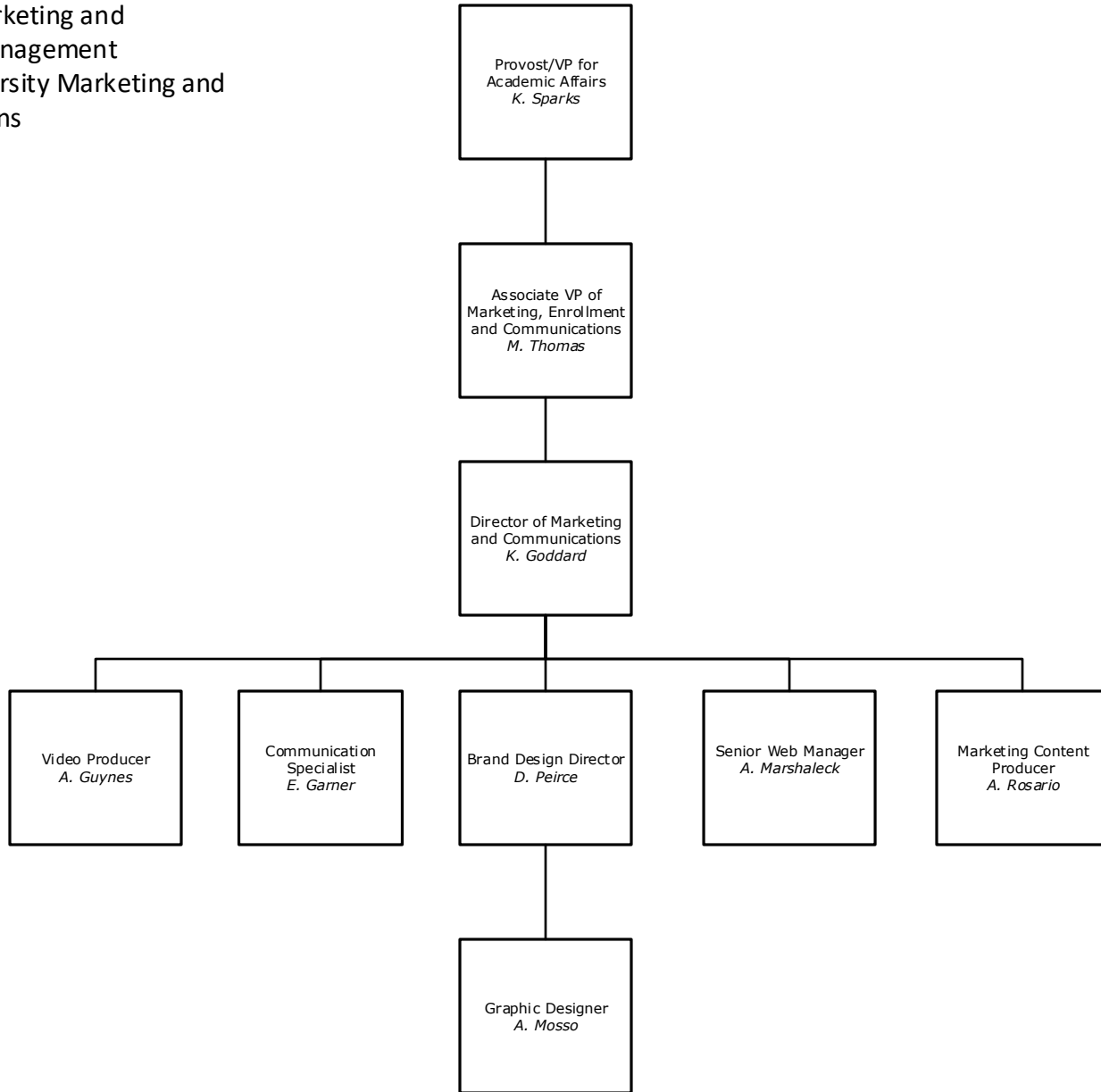


Office of the Provost and Vice President
for Academic Affairs
Division of Marketing and Enrollment
Management



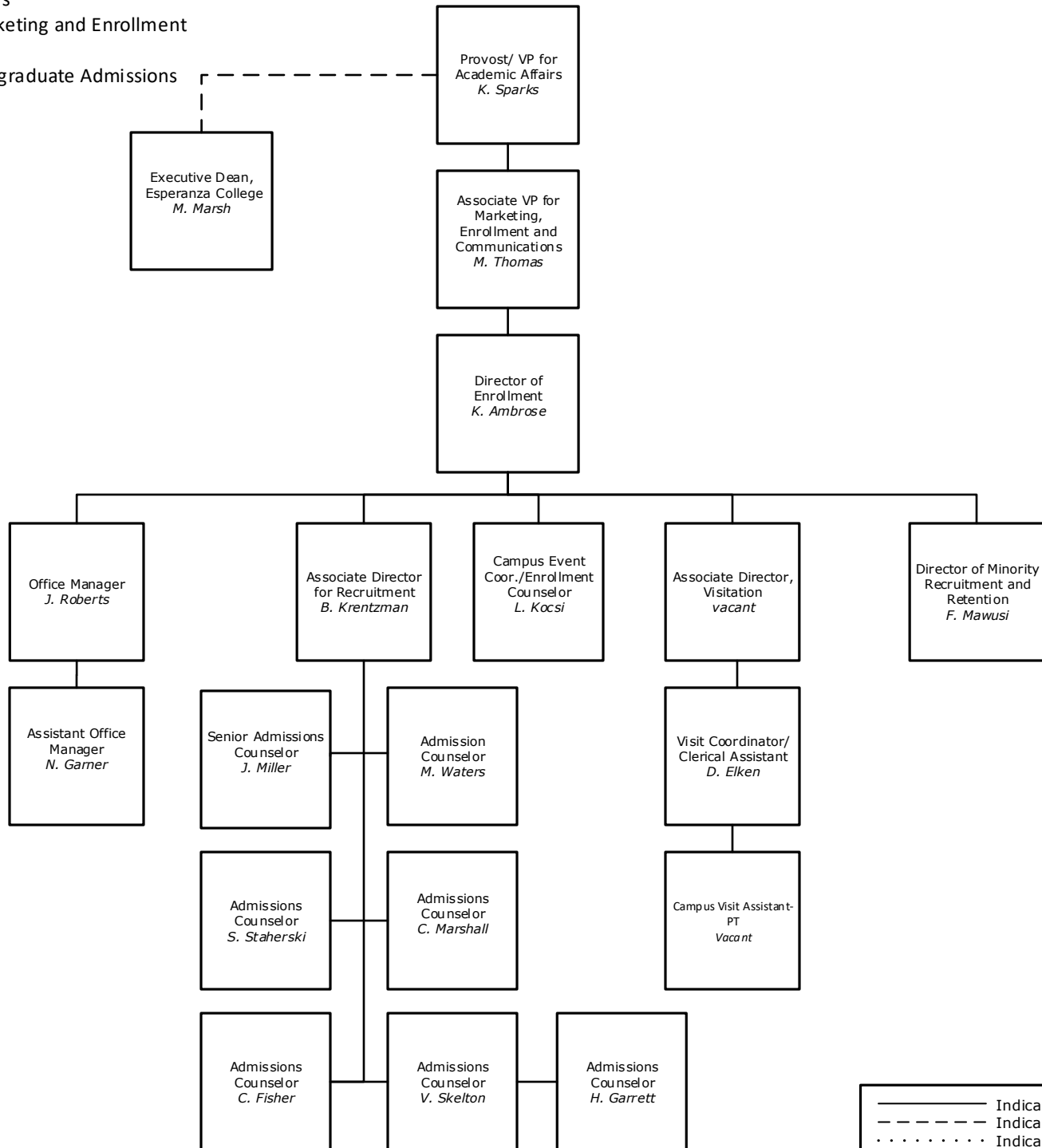


Office of the Provost and Vice President for
Academic Affairs
Division of Marketing and
Enrollment Management
Office of University Marketing and
Communications





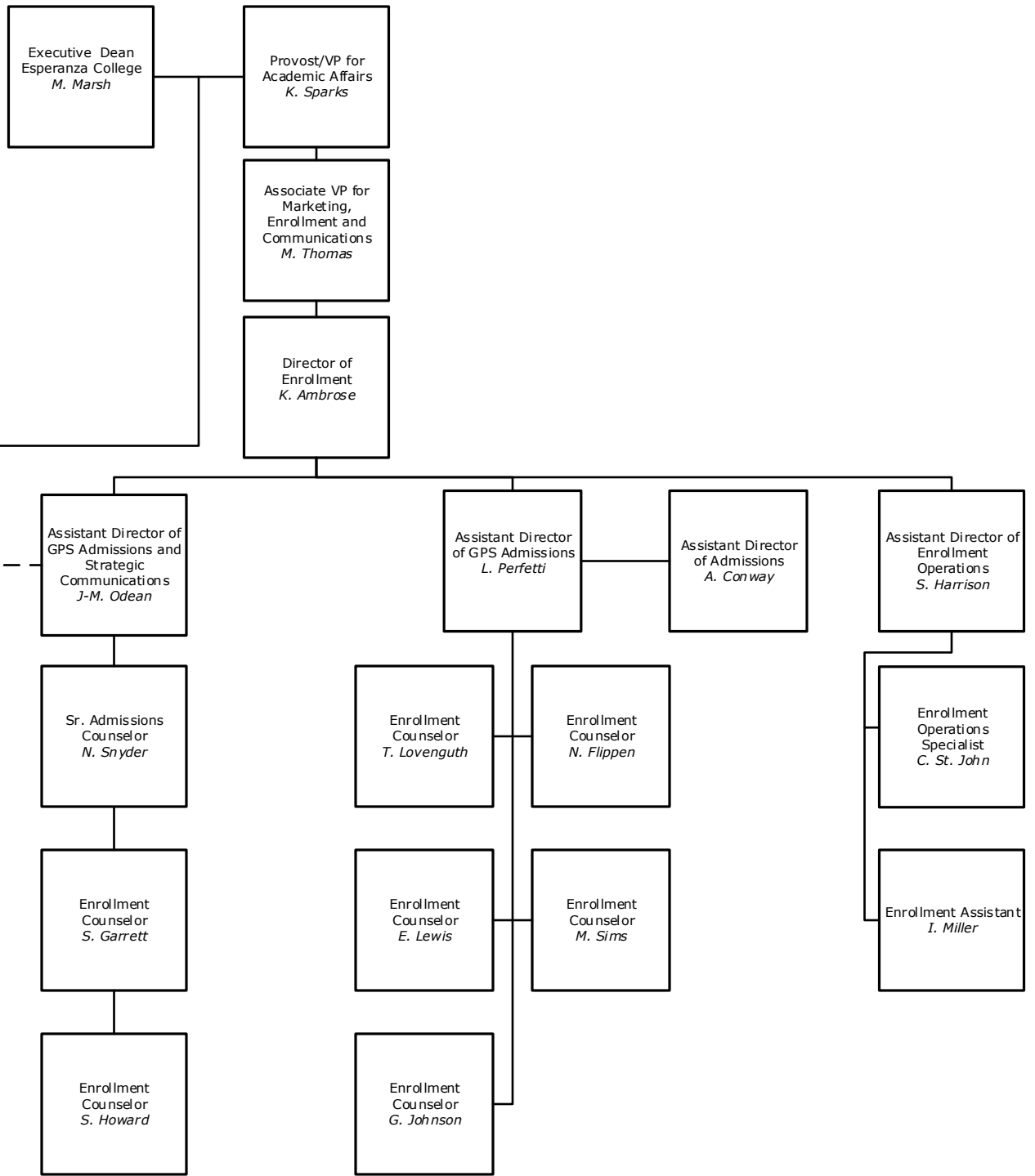
Office of the Provost and Vice President for
Academic Affairs
Division of Marketing and Enrollment
Management
Office of Undergraduate Admissions



————— Indicates a Direct Report
- - - - - Indicates a Dual Report
..... Indicates a Functional Report
* Position Reports Elsewhere



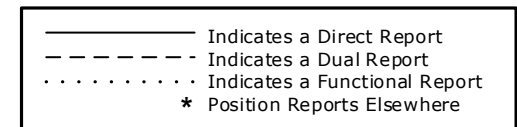
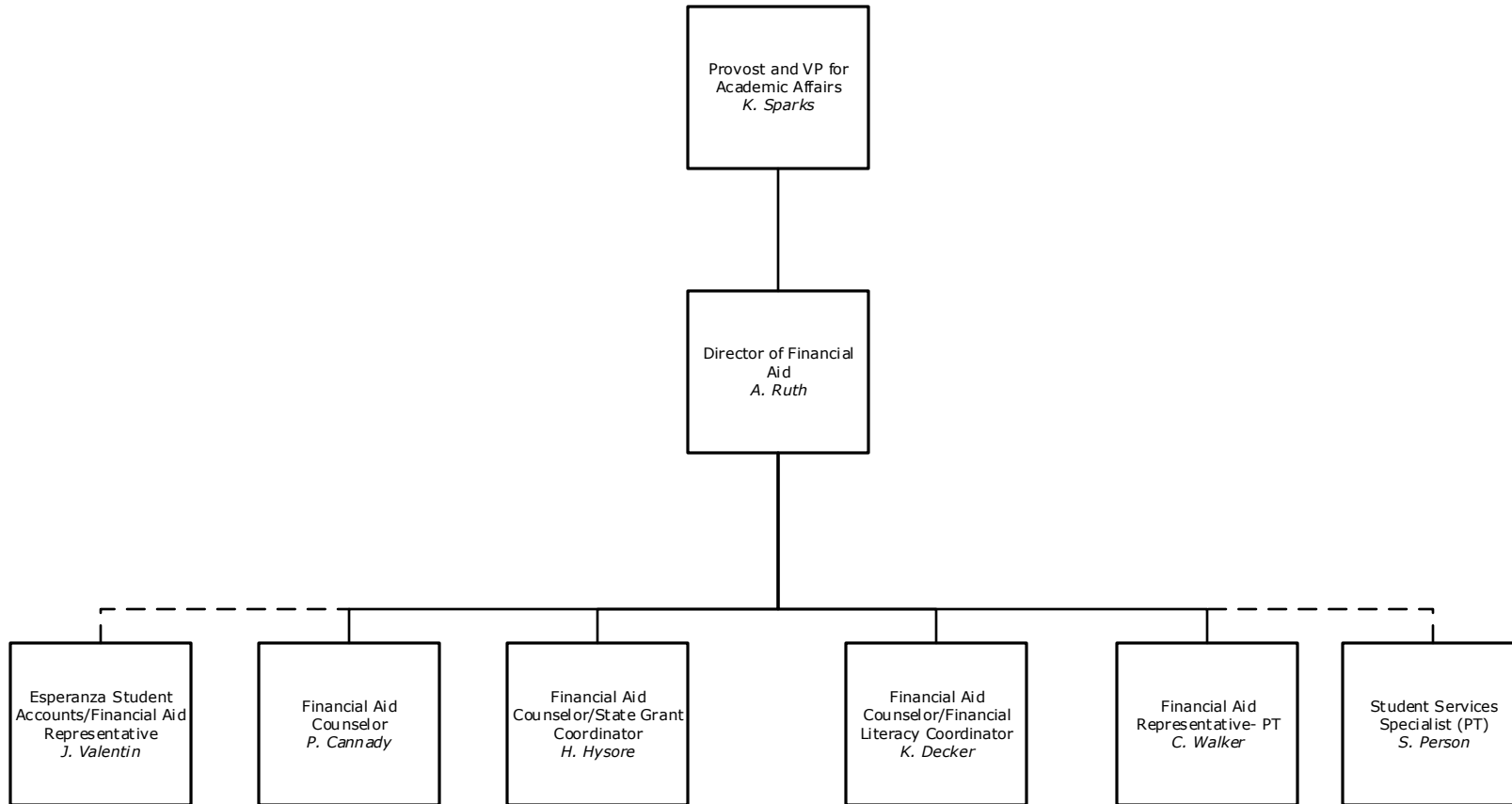
Office of the Provost and Vice President
for Academic Affairs
Division of Marketing and Enrollment
Management
Office of GPS Admissions



— Indicates a Direct Report
 - - - Indicates a Dual Report
 Indicates a Functional Report
 * Position Reports Elsewhere

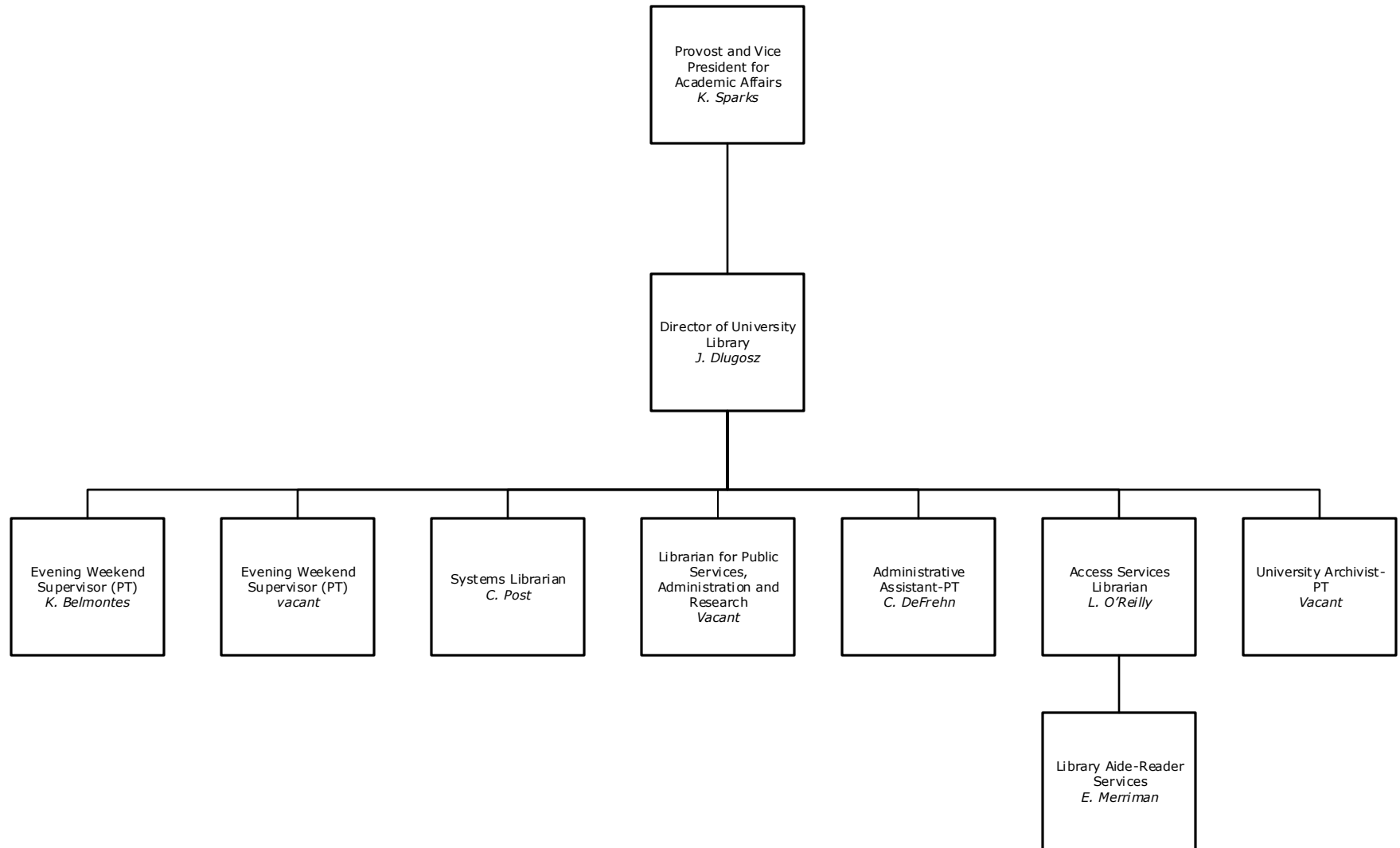


Office of the Provost and Vice President for
Academic Affairs
Office of Financial Aid





Division of Academic Affairs
Office of the Director of University Library



————— Indicates a Direct Report
- - - - - Indicates a Dual Report
..... Indicates a Functional Report
* Position Reports Elsewhere



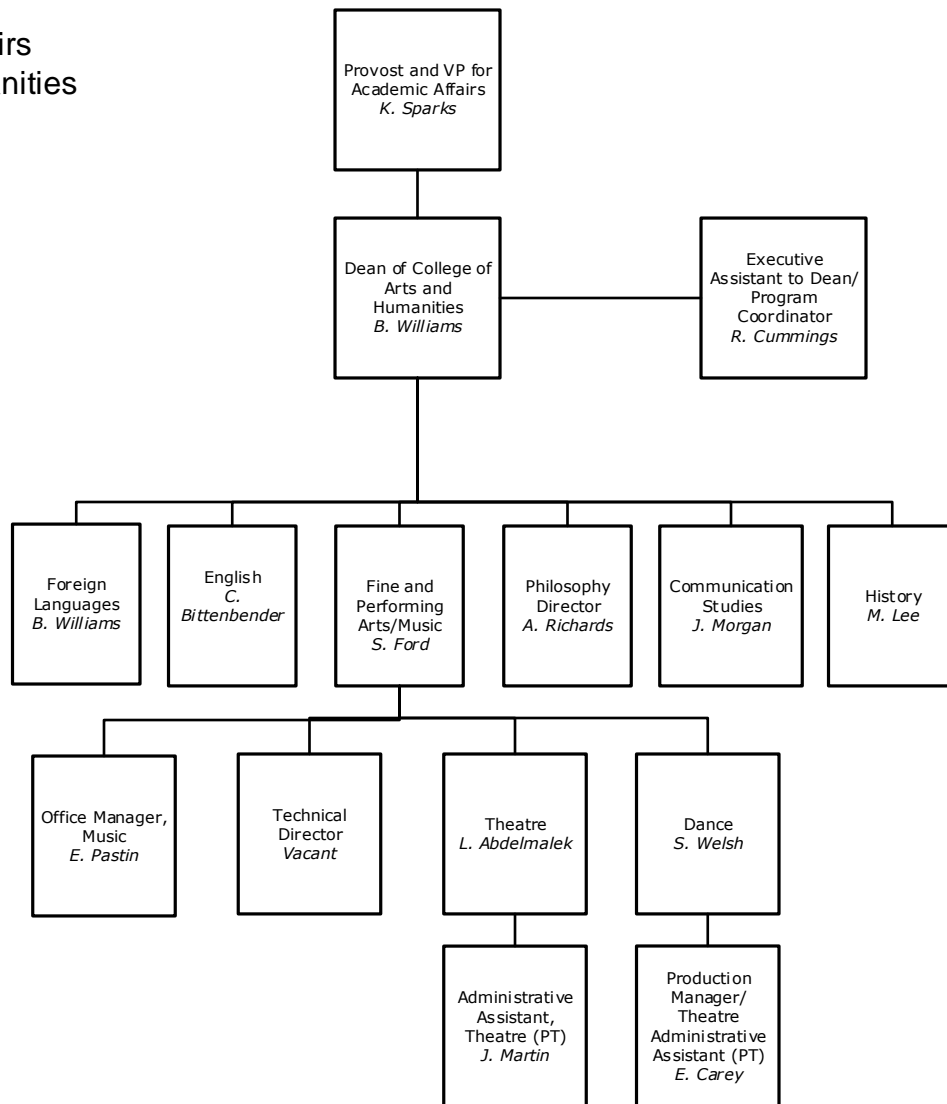
Faculty, Templeton Honors College

K. Cox
J. Dill
F. Putnam
K. Smith
B. Williams

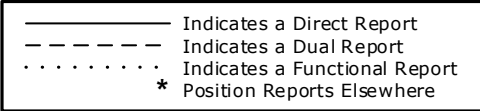
————— Indicates a Direct Report
 - - - - - Indicates a Dual Report
 Indicates a Functional Report
 * Position Reports Elsewhere

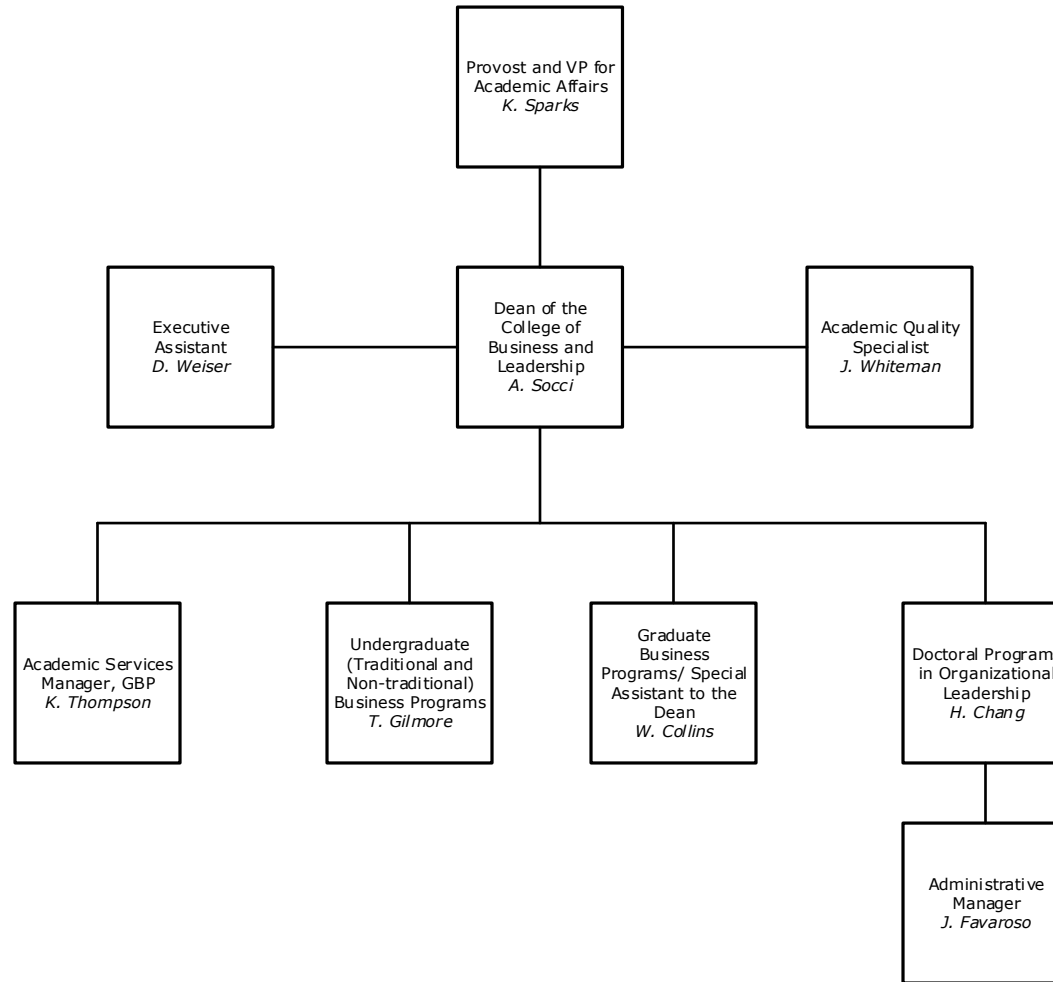


Division of Academic Affairs
College of Arts and Humanities



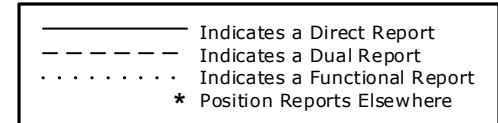
Faculty, College of Arts and Humanities		
L. Abdelmalek	K. Hayes	T. Moyer
C. Bittenbender	E. Jakuboski	J. Reimer
F. Brinkmann	H. Jung	A. Richards
P. Cary	M. Lee	W. Storm
S. Ford	S. McMonagle	S. Welsh
J. Hatch	J. Morgan	





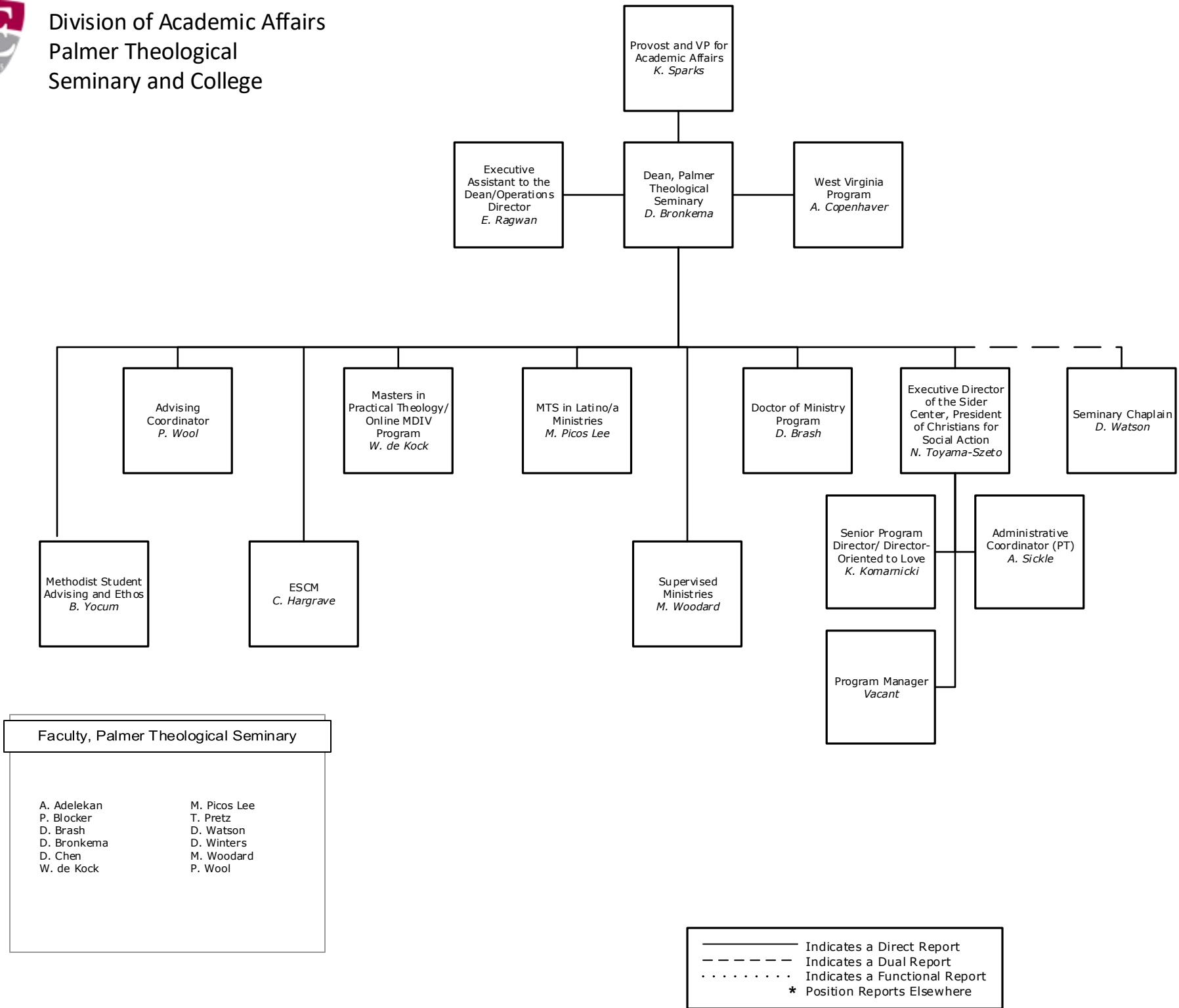
Faculty, College of Business and Leadership

H. Chang C. Lee-Chuvala
W. Collins F. Oikelome
P. Duthie A. Socci
L. Elken L. Thomas
T. Gilmore
D. Greenhalgh
K. Hernandez
M.J. Jones



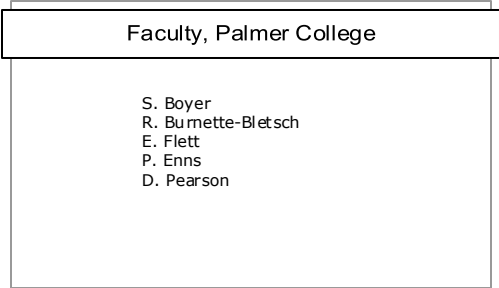
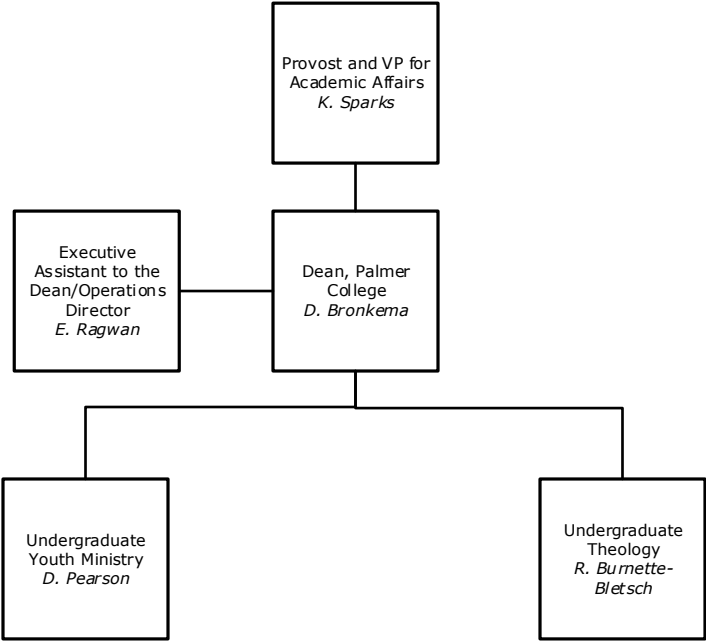


Division of Academic Affairs
Palmer Theological
Seminary and College



Faculty, Palmer Theological Seminary	
A. Adelekan	M. Picos Lee
P. Blocker	T. Pretz
D. Brash	D. Watson
D. Bronkema	D. Winters
D. Chen	M. Woodard
W. de Kock	P. Wool

————— Indicates a Direct Report
 - - - - - Indicates a Dual Report
 Indicates a Functional Report
 * Position Reports Elsewhere





Provost and VP for
Academic Affairs
K. Sparks

Dean, College of
Education
S. Edgar-Smith

Executive
Assistant to the
Dean/Certification
Officer
A. Ressler

Undergraduate Programs in Education
Chair: N. McKeown

**School Counseling and School
Psychology**
Chair: C. Kunsch

Graduate Programs in Education
Chair: S. Eckert

Certifications
Early Childhood Education-PK-4
C. Neimetz
Early Childhood Ed. With Special Ed.-
N-8
N. McKeown
ESL-K-12
S. Cerniglia
Foreign Language Education K-12
S. Edgar-Smith
Music K-12
Vacant
Secondary Ed. Biology 7-12
Secondary Ed. Chemistry 7-12
Secondary Ed. Communications 7-12
Secondary Ed. English 7-12
Secondary Ed. Math 7-12
Secondary Ed. Social Studies 7-12
H. Mercurio

Early Childhood
Education
C. Neimetz

Middle & Secondary
Education
H. Mercurio

Accelerated
Education Early
Childhood
T. Bonerbo

STEM Initiatives
M. Lee

Director
Center for
Teaching, Learning
and Technology
R. Gidjunis

Manager of
Instructional
Design and
Learning
Technologies
S. Yavor

Coordinator of
Educational
Technology and
Student Learning
Outcomes
E. Hernandez

Instructional
Designer
Vacant

Instructional Video
Editor - PT
A. Dunbar

Co-Director, School
Psychology
C. Kunsch

Co-Director, School
Psychology/Field
Experience
Coordinator
vacant

Academic
Outreach Manager
I
J. Marshall

School Counseling/
School Counseling
Field Experience
Coordinator
J. Cipollone

TESOL
S. Cerniglia

Reading
H. Mercurio

Elementary/Early
Childhood Education
C. Neimetz

Field Experience
Coordinator
R. Christman

UG and Grad Student
Teaching and Field
Experience/Inst.
Coach Endorsement
*R. Richard & R.
Christman*

Special Ed
Autism Course Work
N. McKeown

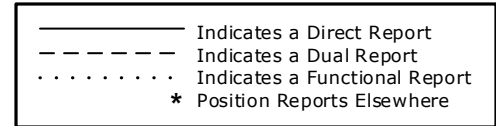
Coordinator of
Education Services
R. Richard

Multicultural
Education & M.ED
Curriculum Instruction
S. Eckert

Certifications
Early Childhood Education-PK-4
Early Childhood Director
C. Neimetz
Early Childhood Ed. With Special Ed.-
Pre-K-8 & 7-12
N. McKeown
Supervisor of Special Ed.
General Supervisor-K-12
S. Edgar-Smith
Middle Level Education
H. Mercurio
Reading Supervisor K-12
Reading Specialist K-12
H. Mercurio
ESL-K-12
S. Cerniglia
Foreign Language Education K-12
F. Brinkmann
Music K-12
E. Jakuboski
Secondary Ed. Biology 7-12
M. Lee
Secondary Ed. Chemistry 7-12
Secondary Ed. Communications 7-12
Secondary Ed. English 7-12
Secondary Ed. Math 7-12
Secondary Ed. Social Studies 7-12
H. Mercurio
Health and P.E.
I. Bilkins and T. Bonerbo
School Principalship
R. Christman

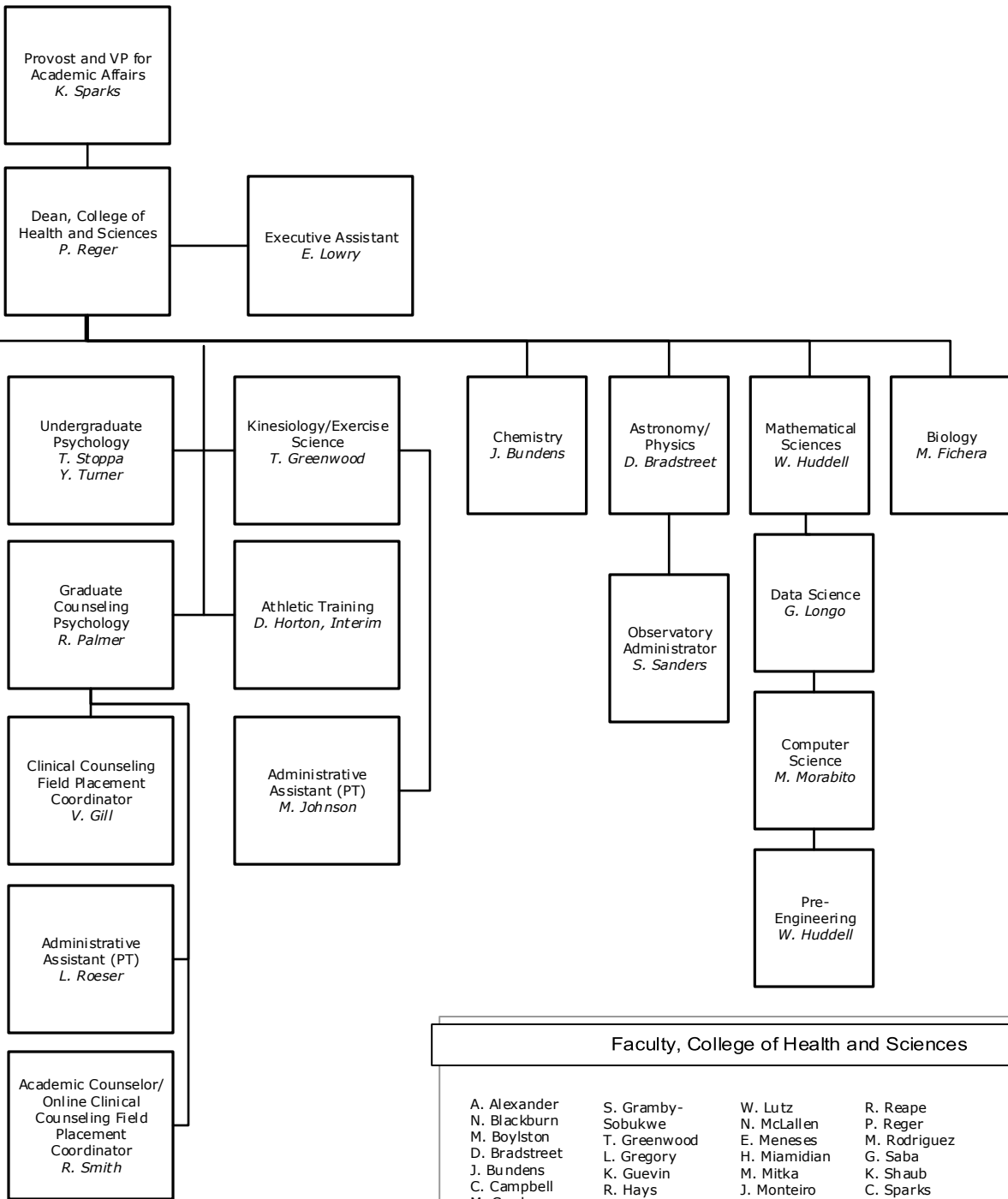
Faculty, College of Education

- | | |
|--------------|-------------|
| T. Bonerbo | M. Lee |
| S. Cerniglia | N. McKeown |
| R. Christman | H. Mercurio |
| J. Cipollone | C. Neimetz |
| S. Eckert | K. Van Horn |
| R. Gidjunis | |
| C. Kunsch | |





Division of Academic Affairs
College of Health and Sciences

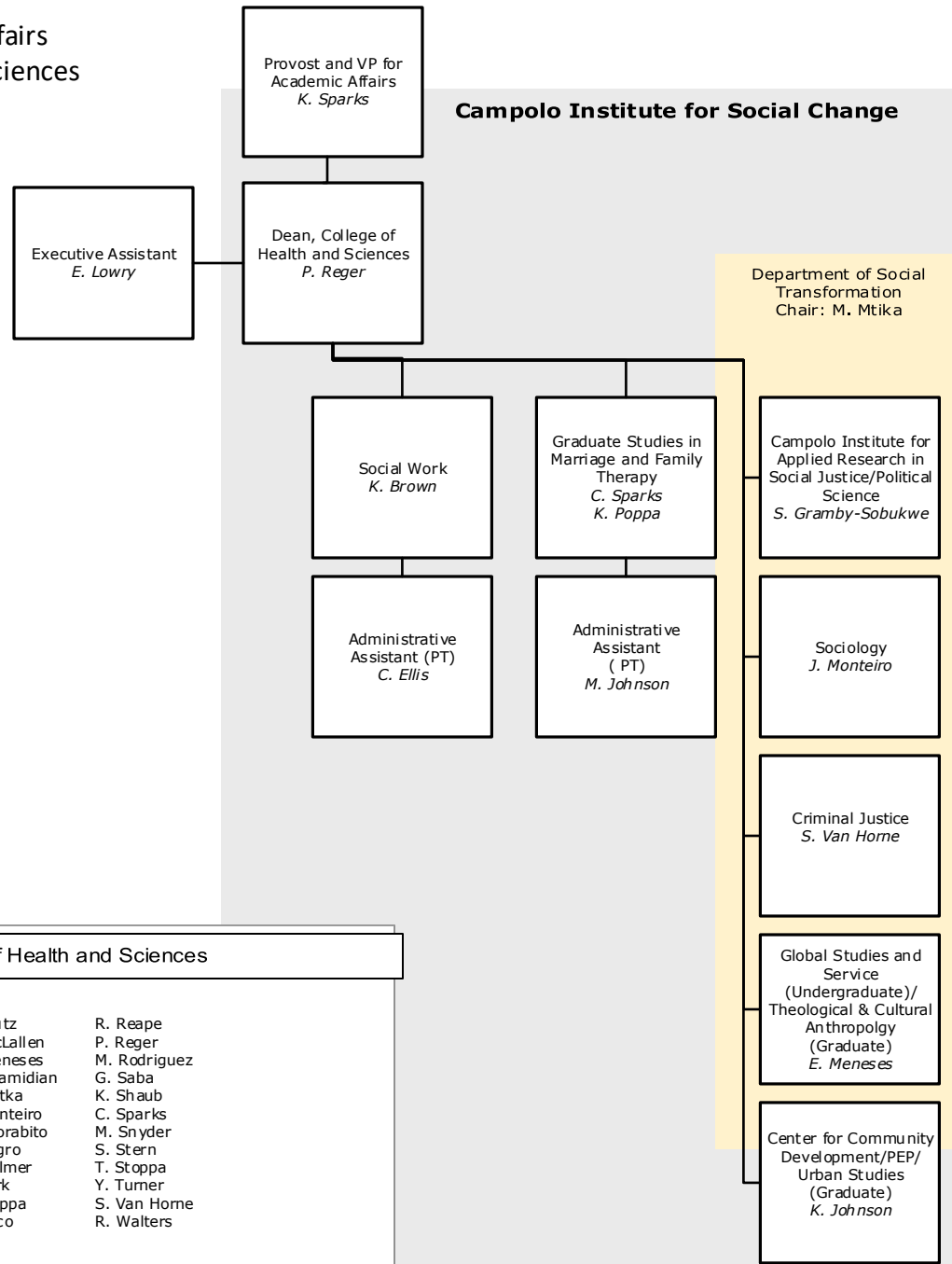


————— Indicates a Direct Report
 - - - - - Indicates a Dual Report
 Indicates a Functional Report
 * Position Reports Elsewhere

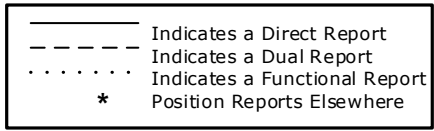
Faculty, College of Health and Sciences			
A. Alexander	S. Gramby-Sobukwe	W. Lutz	R. Reape
N. Blackburn	T. Greenwood	N. McLallen	P. Reger
M. Boylston	L. Gregory	E. Meneses	M. Rodriguez
D. Bradstreet	K. Guevin	H. Miamidian	G. Saba
J. Bundens	R. Hays	M. Mitka	K. Shaub
C. Campbell	D. Horton	J. Monteiro	C. Sparks
M. Cawley	W. Huddell	M. Morabito	M. Snyder
W. Chung	S. Jackson	C. Nigro	S. Stern
J. Cocking	K. Johnson	R. Palmer	T. Stoppa
M. Fichera	J. Park	J. Park	Y. Turner
E. Fuguet	J. Lawton	K. Poppa	S. Van Horne
J. Giammarco	G. Longo	J. Raco	R. Walters



Campolo Institute for Social Change

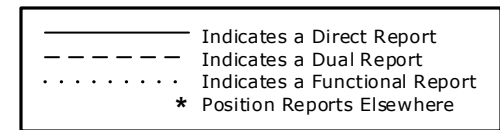
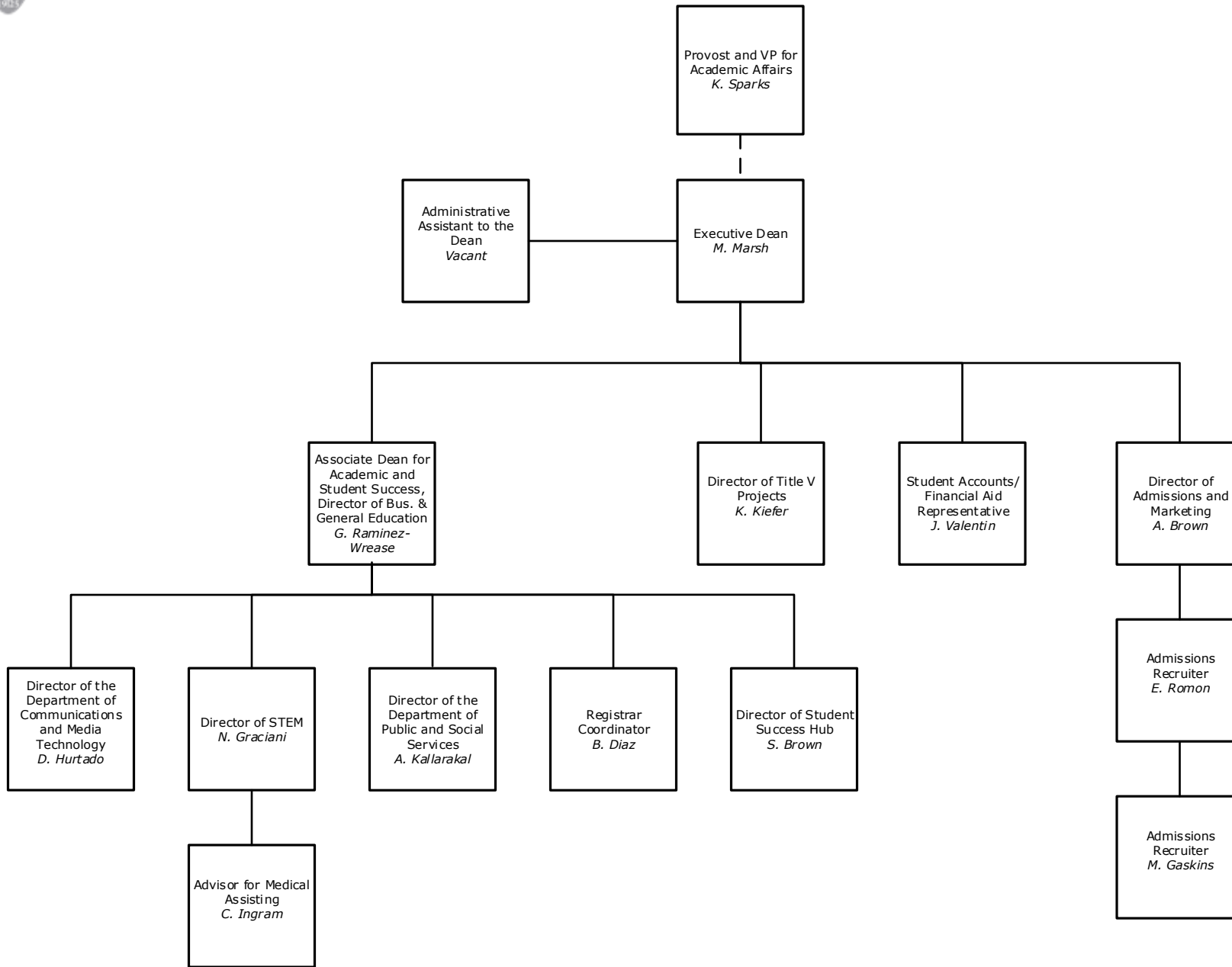


Faculty, College of Health and Sciences			
A. Alexander	S. Gramby-Sobukwe	W. Lutz	R. Reape
N. Blackburn	T. Greenwood	N. McLallen	P. Reger
M. Boylston	L. Gregory	E. Meneses	M. Rodriguez
D. Bradstreet	K. Guevin	H. Miamidian	G. Saba
J. Bundens	R. Hays	M. Mitka	K. Shaub
C. Campbell	D. Horton	J. Monteiro	C. Sparks
M. Cawley	W. Huddell	M. Morabito	M. Snyder
W. Chung	S. Jackson	C. Nigro	S. Stern
J. Cocking	K. Johnson	R. Palmer	T. Stoppa
M. Fichera	J. Lawton	J. Park	Y. Turner
E. Fuguet	G. Longo	K. Poppa	S. Van Horne
J. Giammarco		J. Raco	R. Walters



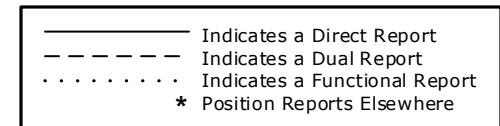
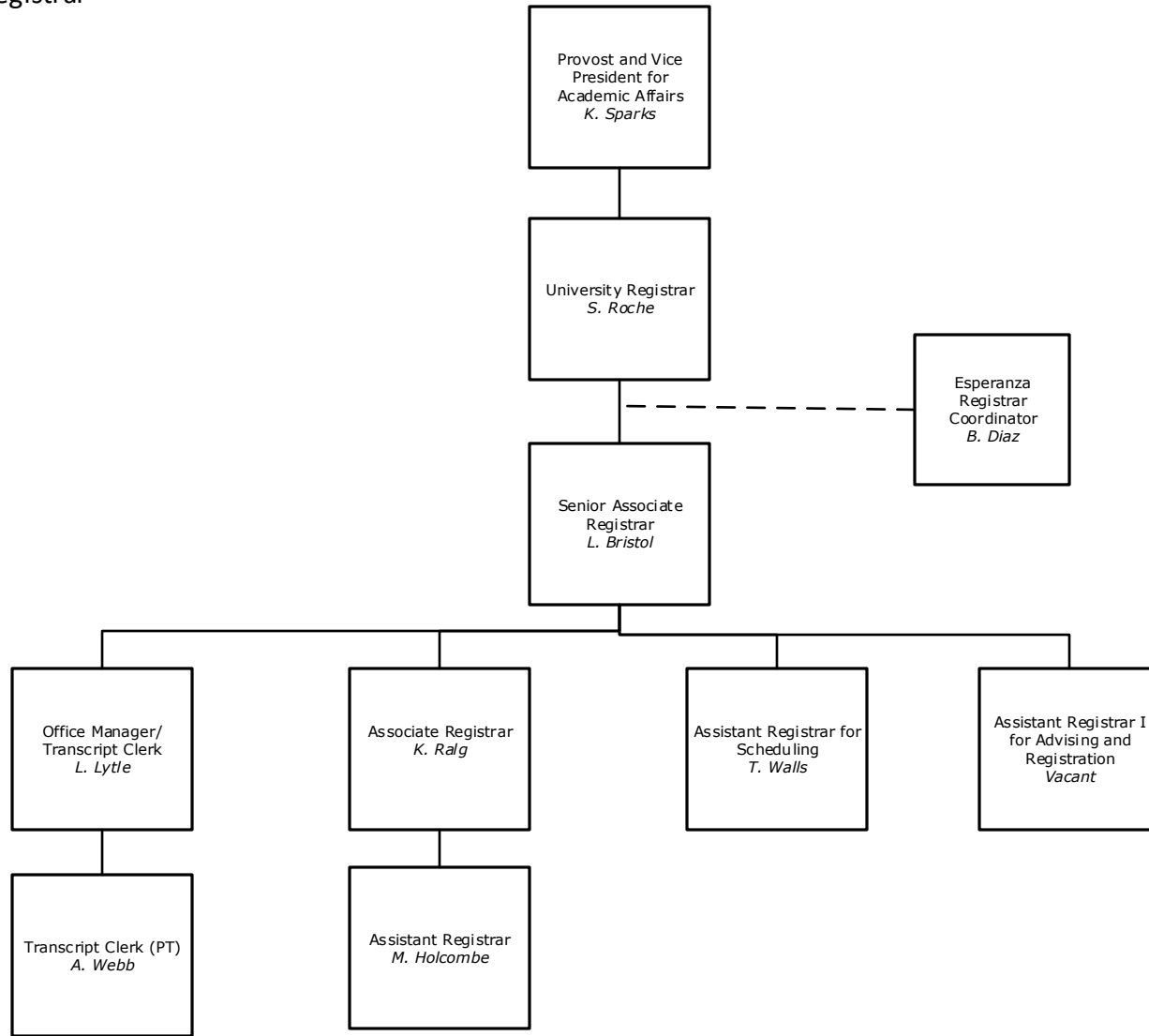


Division of Academic Affairs
Esperanza College





Division of Academic Affairs
Office of the Registrar





Division of Academic Affairs
Athletics

Provost and VP for
Academic Affairs
K. Sparks

Admin Assistant
P. Hedderick

Director of Athletics
E. McNelley

Associate Director of
Performance, Health
and Wellness
B. Bingaman

Associate Athletic
Director for
Compliance and
Sports Medicine
J. Post

Associate Athletic
Director for Facilities &
Game Day Mgmt/Head
Coach, Men's Lacrosse
K. Wallace

Director of Athletic
Communications
D. Mouw

Associate Athletic
Director for Internal
Operations/SWA/RD
H. Birtwistle

Head Men's
Soccer Coach
K. Brenner

Director of
Track and
Fields and
Cross-Country
M. Moffitt

Head Coach,
Women's
Lacrosse
E. Gainer

Dir of Student
Athlete Exp. &
Dev/Head
Coach, W.
Volleyball
M. Birtwistle

Head Coach,
Women's
Softball
T. Adams

Head Coach,
Men's and
Women's
Tennis (PT)
M. Spangler

Head Coach,
Men's and
Women's Golf
A. Patterson

Head Coach,
Field Hockey/
Comm.
Outreach Coor.
C. Azzarano

Assistant
Coach, Track
and Field/CC
N. Bellinotti

Head Coach,
Women's
Basketball
E. Houston

Head Coach,
Women's
Soccer
A. Stueck

Event
Management/
Head Baseball
Coach
S. Renauro

Event
Management/
Head Coach,
Men's Basketball
D. Pruessner

Assistant Athletic
Trainer
Z. Hackett

Assistant Athletic
Trainer
B. Wright

Head Coach Men's
Volleyball/Event
Management
R. Syracuse

Co-Director of
Intramural
C. Piper

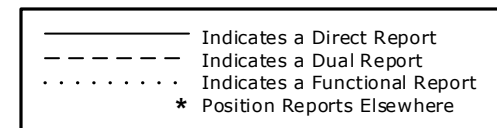
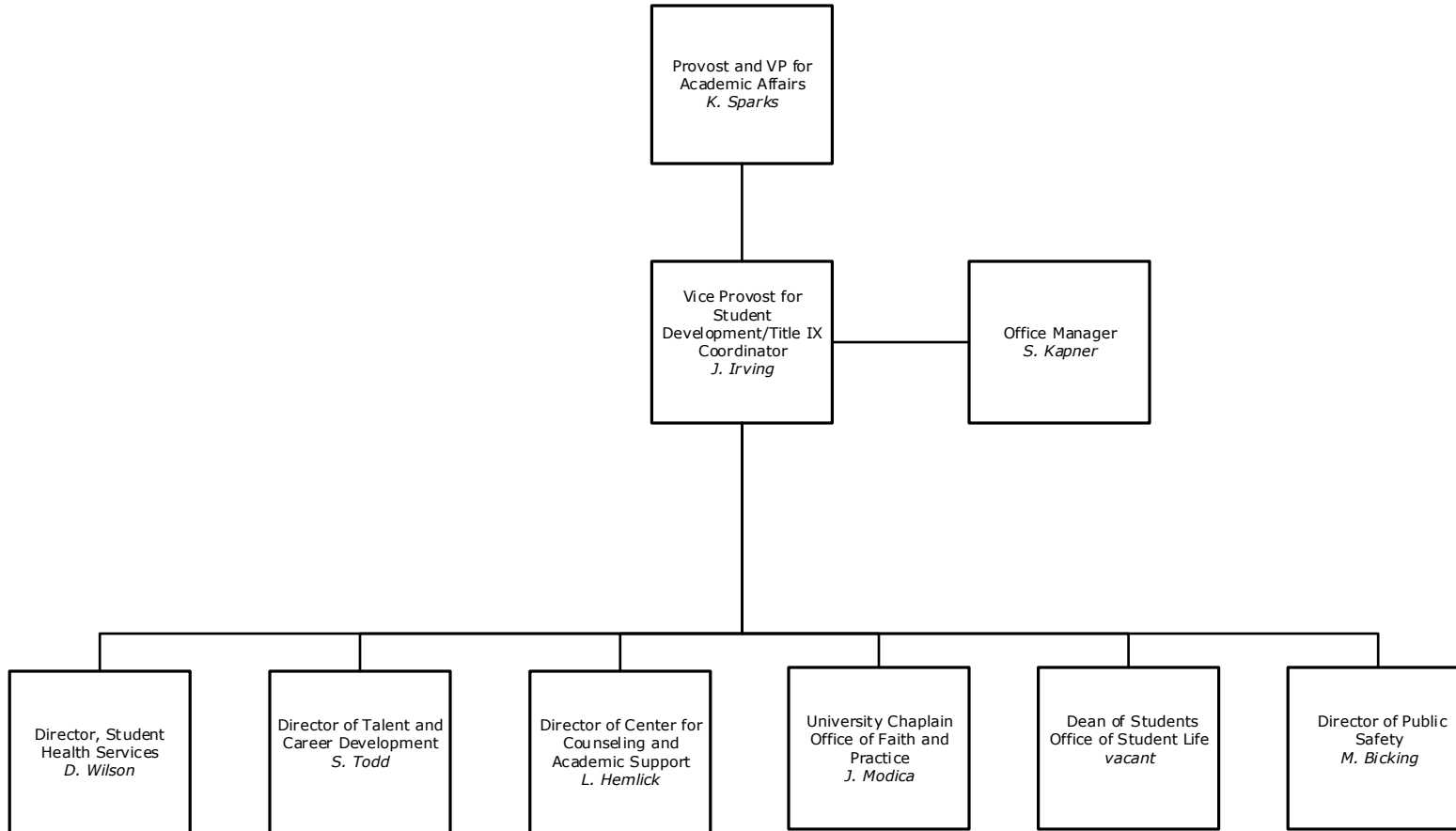
— Indicates a Direct Report
- - - Indicates a Dual Report
... Indicates a Functional Report
* Position Reports Elsewhere

Assistant Coaches

- | | | |
|---------------|----------------|-------------|
| K. Baisden | R. Kendrick | C. Sitowski |
| N. Bellinotti | L. Kidd | J. Sly |
| S. Bergman | M. Kirby | K. Stramara |
| H. Bitzberger | S. Landes | T. Verna |
| J. Burnside | J. Lipton | D. Wagner |
| A. Carroll | G. Mauro | D. Waldman |
| B. Casey | B. Millard | N. Ware |
| J. Cipollone | B. Mizell | R. Weyandt |
| J. D' Angelo | A. Noel | |
| S. Deimler | L. Nolan | |
| D. Flor | K. Norris | |
| K. Friebolin | J. Pang | |
| S. Gannon | M. Paulsen | |
| J. Gantz | C. Piper | |
| D. Grafius | F. Ramirez | |
| M. Griffin | J. Sacchetti | |
| A. Haman | J. Scannapieco | |

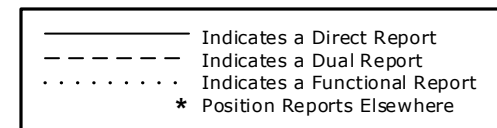
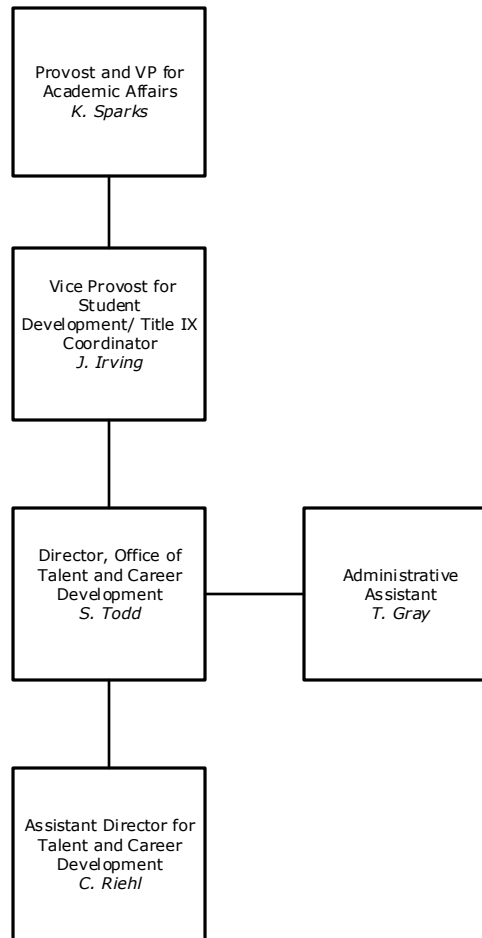


Division of Academic Affairs
Vice Provost for Student Development



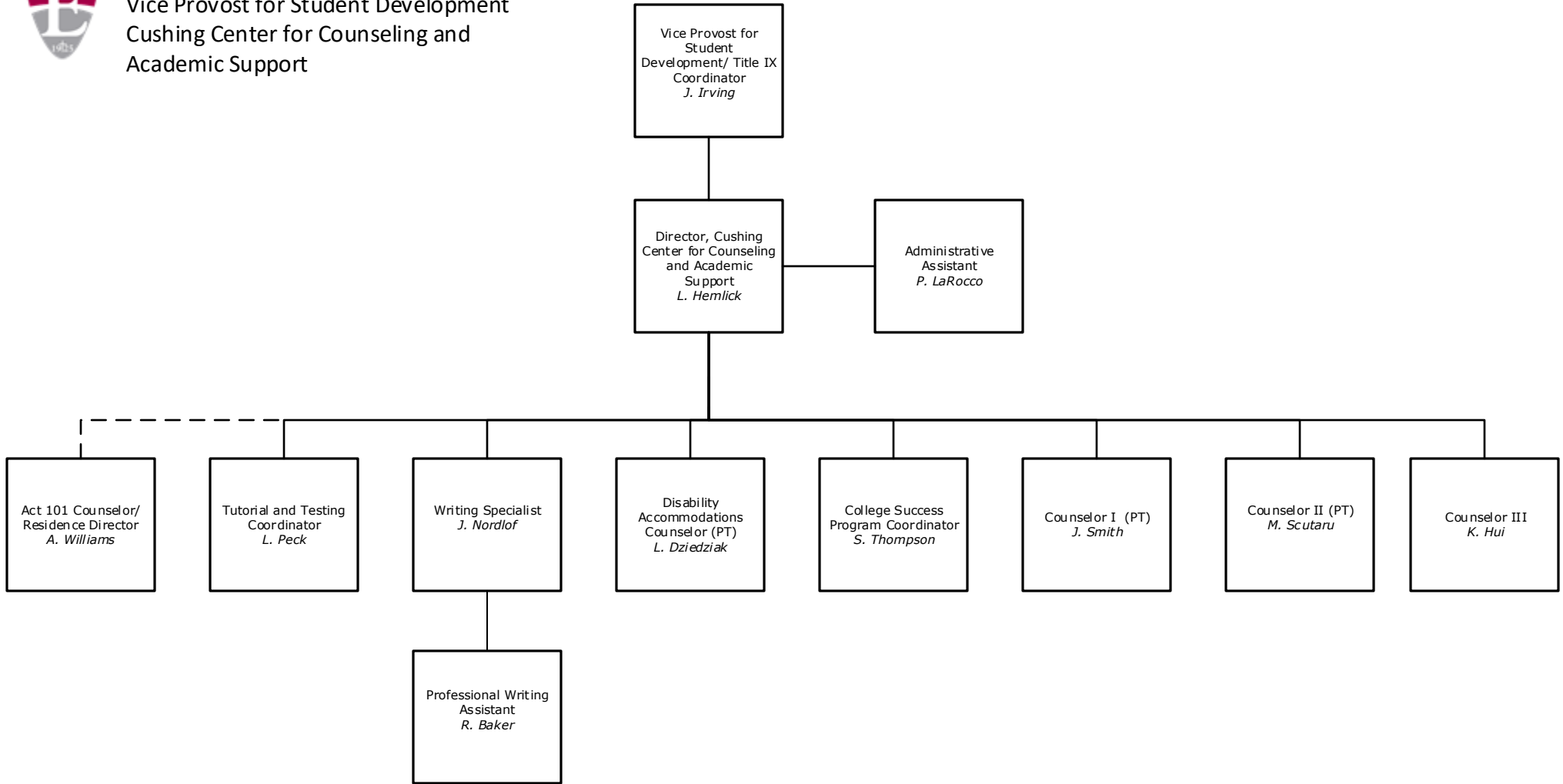


Division of Academic Affairs
Office of Talent and Career Development





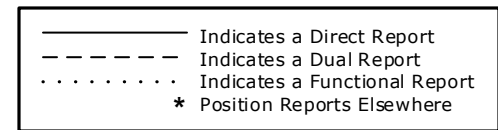
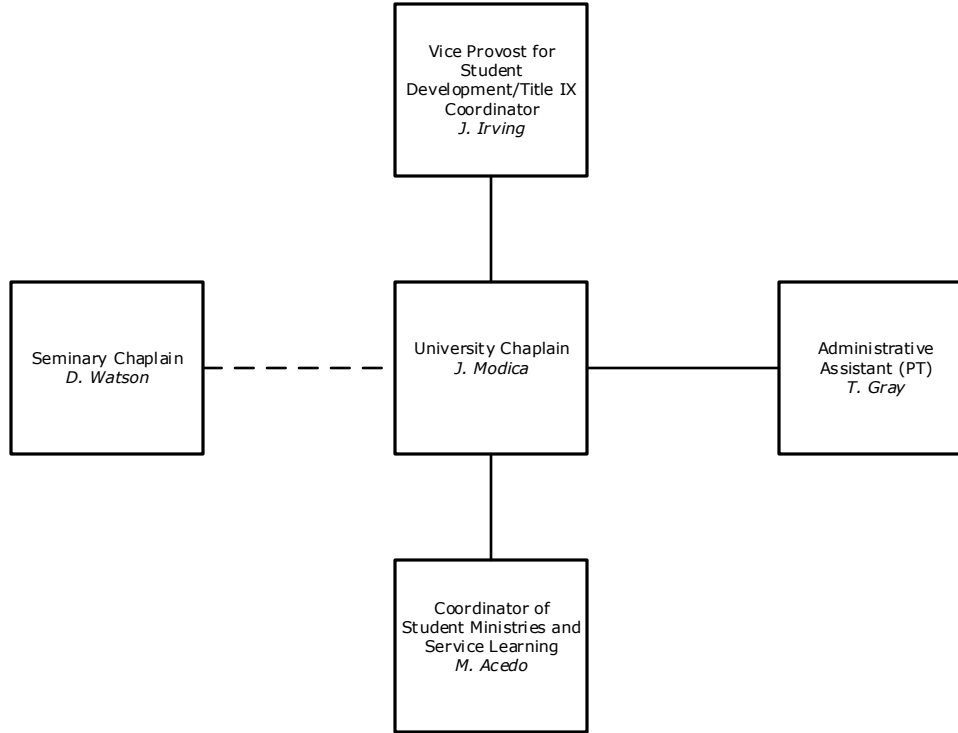
Division of Academic Affairs
Vice Provost for Student Development
Cushing Center for Counseling and
Academic Support



— Indicates a Direct Report
- - - Indicates a Dual Report
..... Indicates a Functional Report
* Position Reports Elsewhere

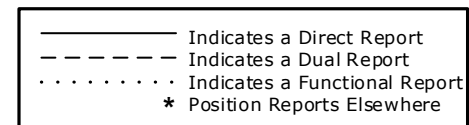
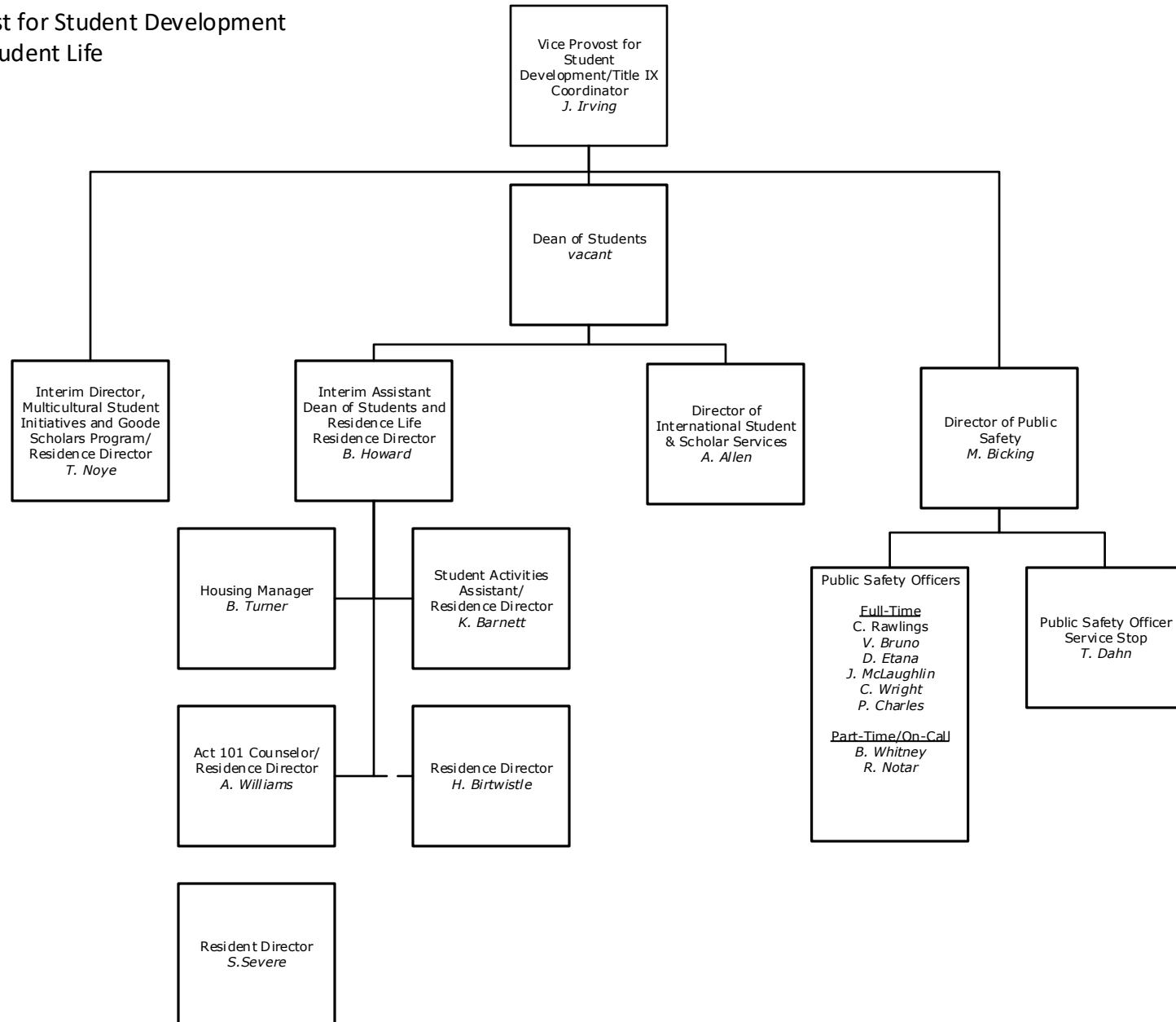


Division of Academic Affairs
Office of the Vice Provost for Student
Development
Office of Faith and Practice



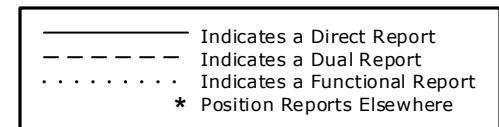
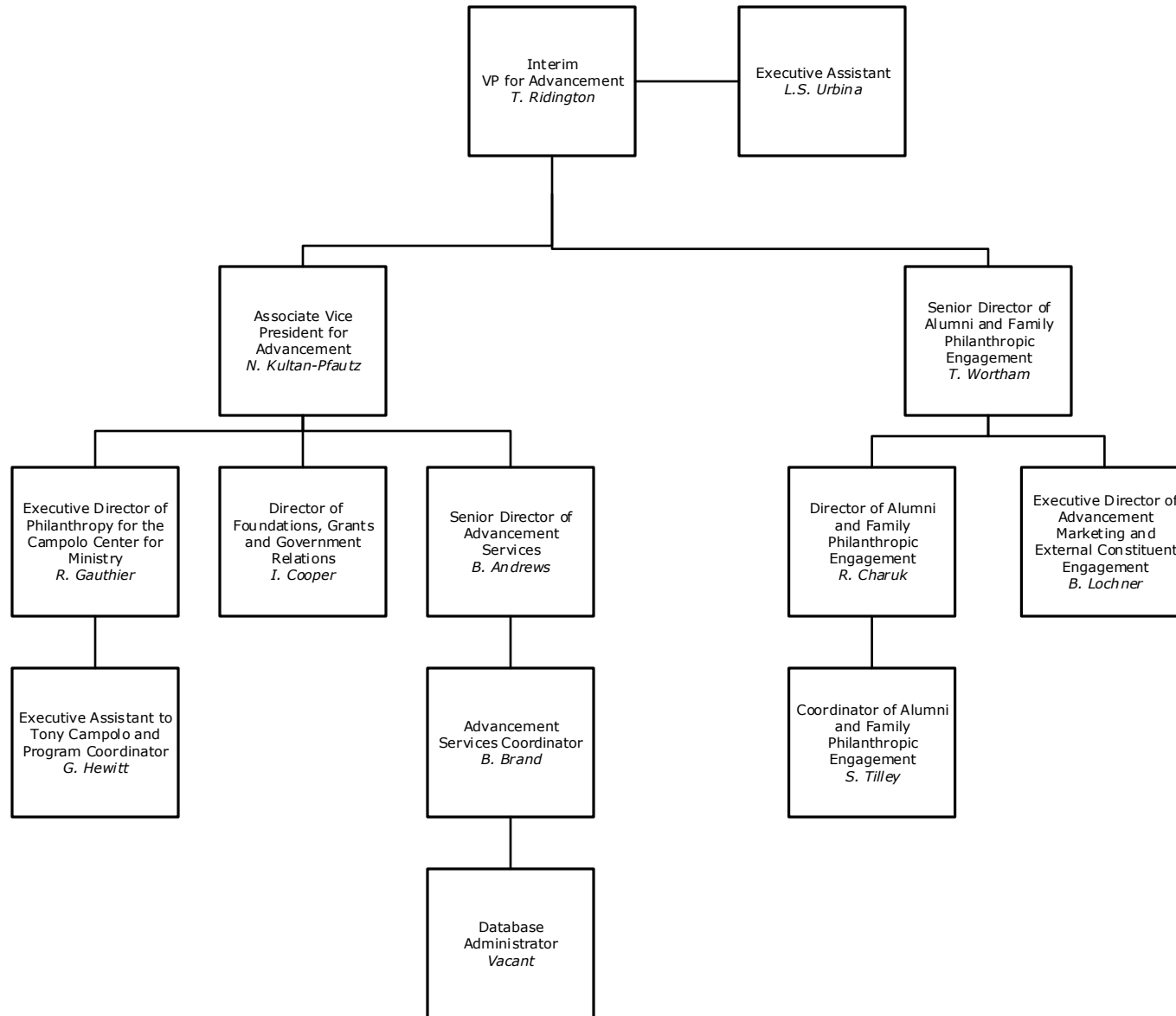


Division of Academic Affairs
Vice Provost for Student Development
Office of Student Life



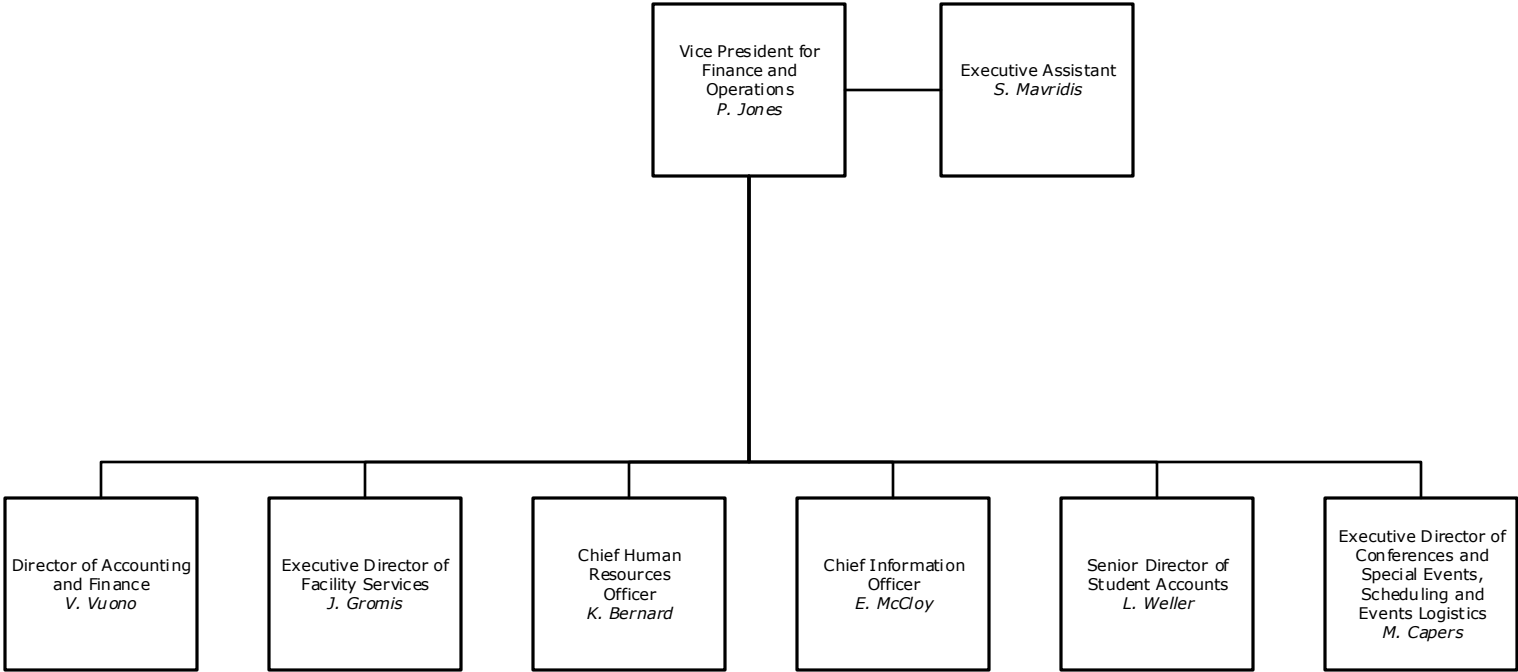


Division of Advancement
Office of the Vice President for Advancement





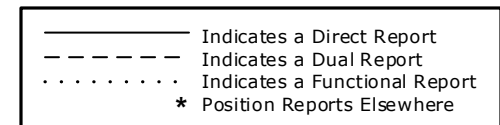
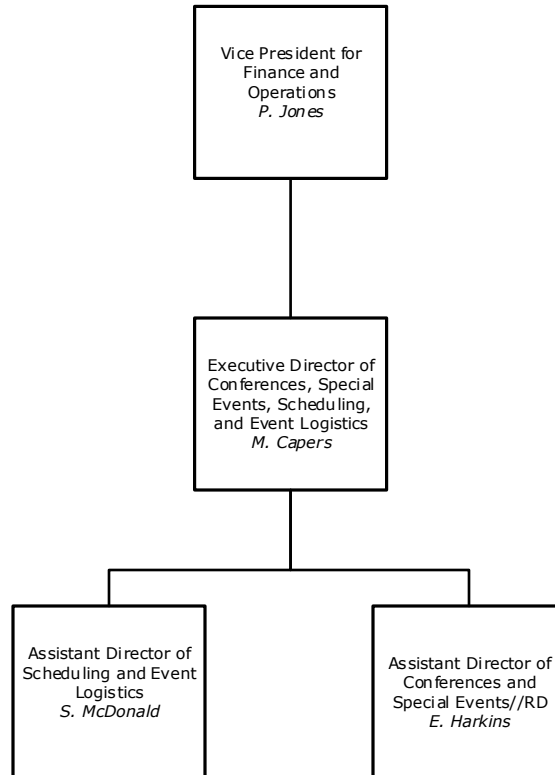
Division of Finance and Operations
Office of the Vice President for Finance and
Operations



— Indicates a Direct Report
- - - Indicates a Dual Report
..... Indicates a Functional Report
* Position Reports Elsewhere

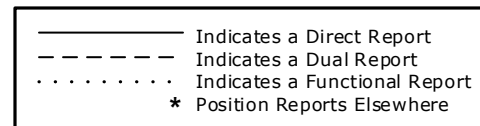
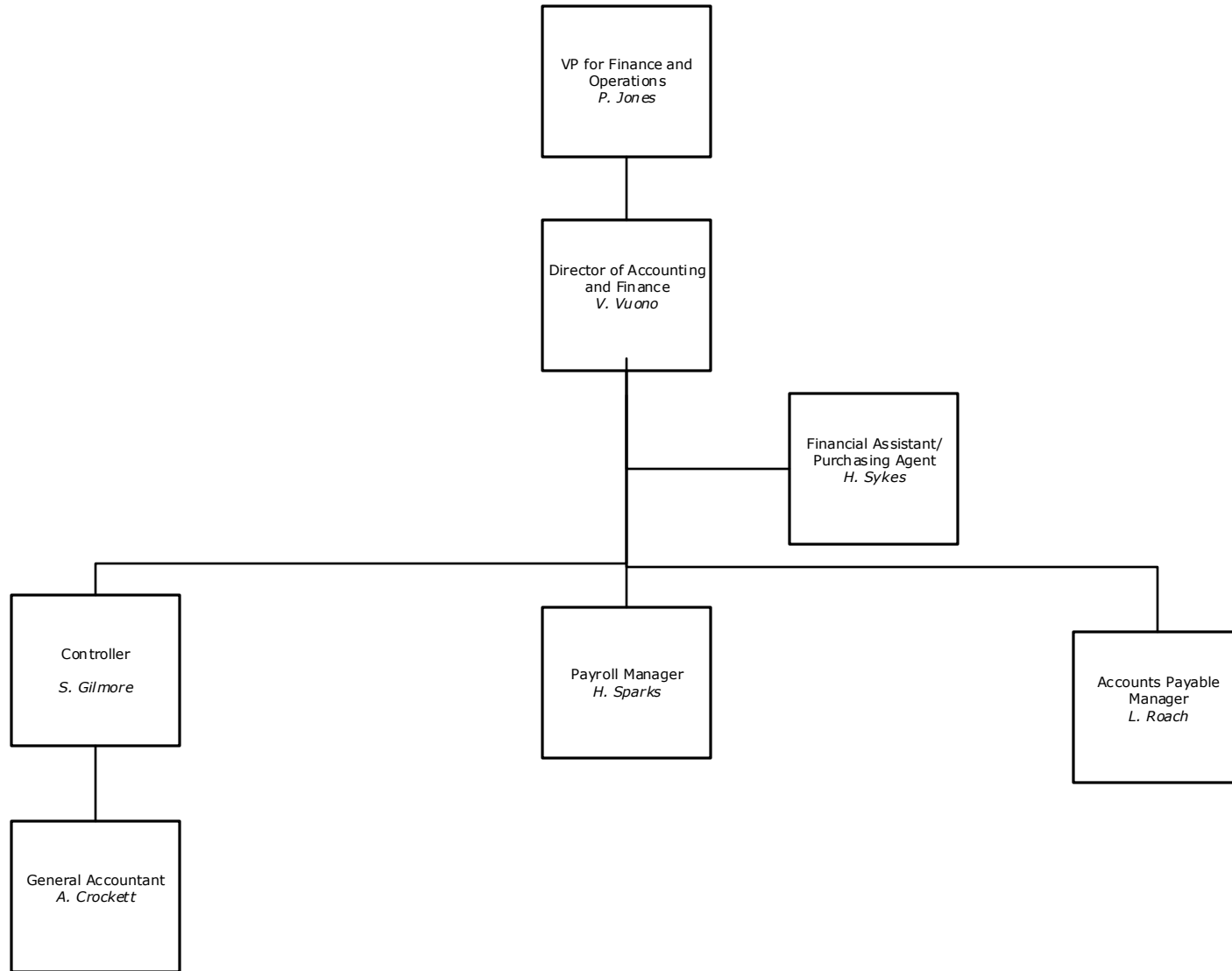


Division of Finance and Operations
Office of Conferences and Special Events



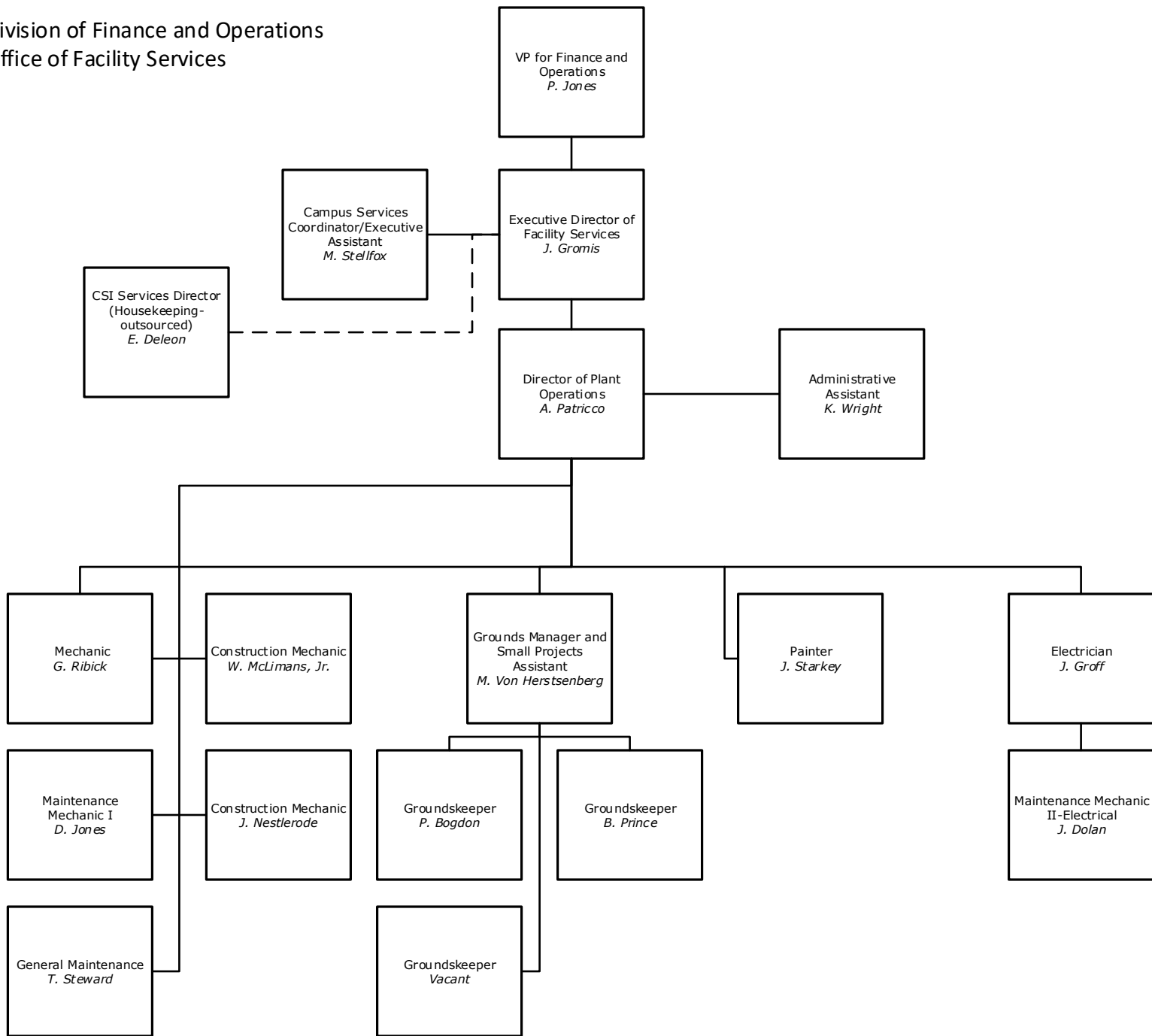


Division of Finance and Operations
Office of Finance and Operations



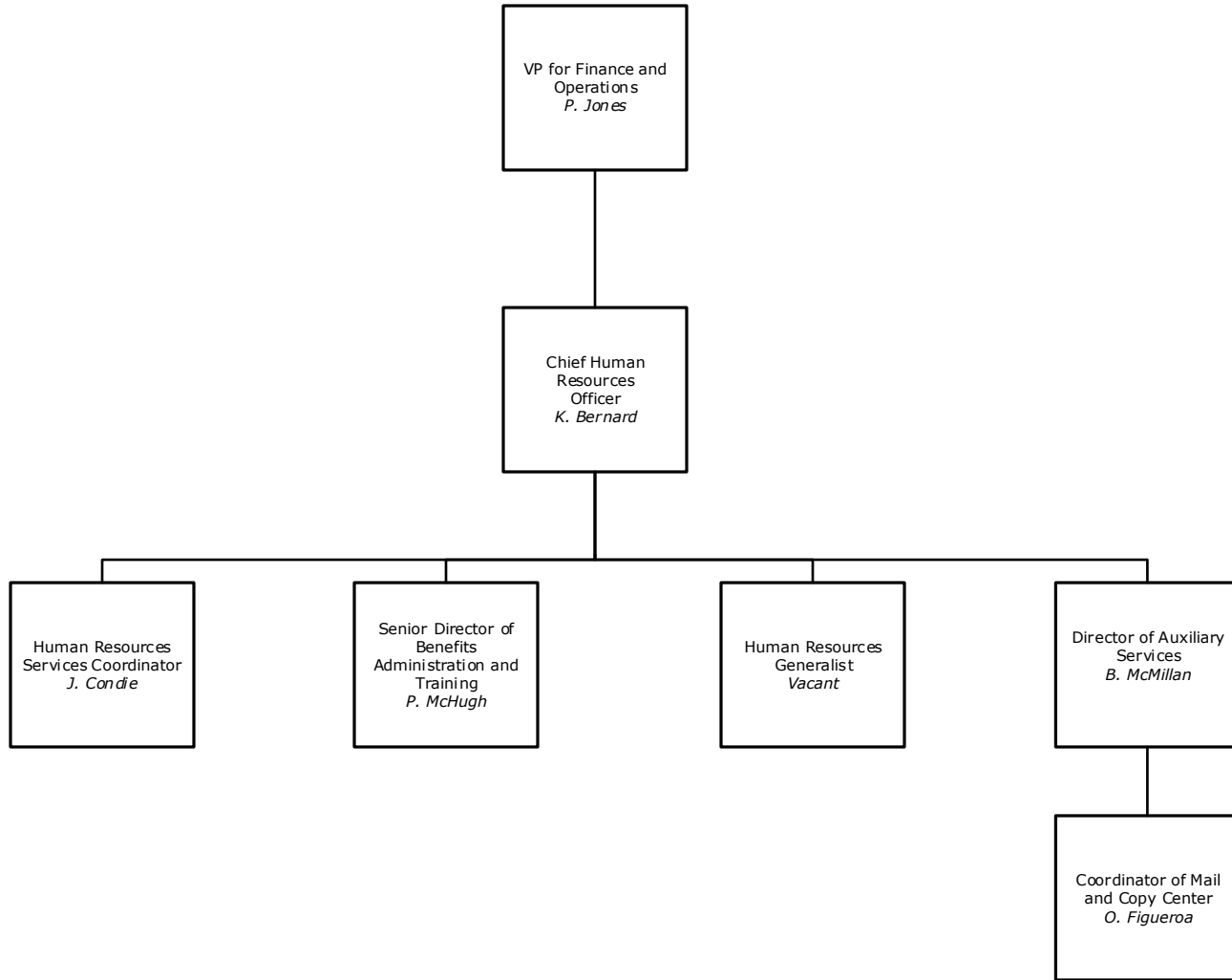


Division of Finance and Operations
Office of Facility Services

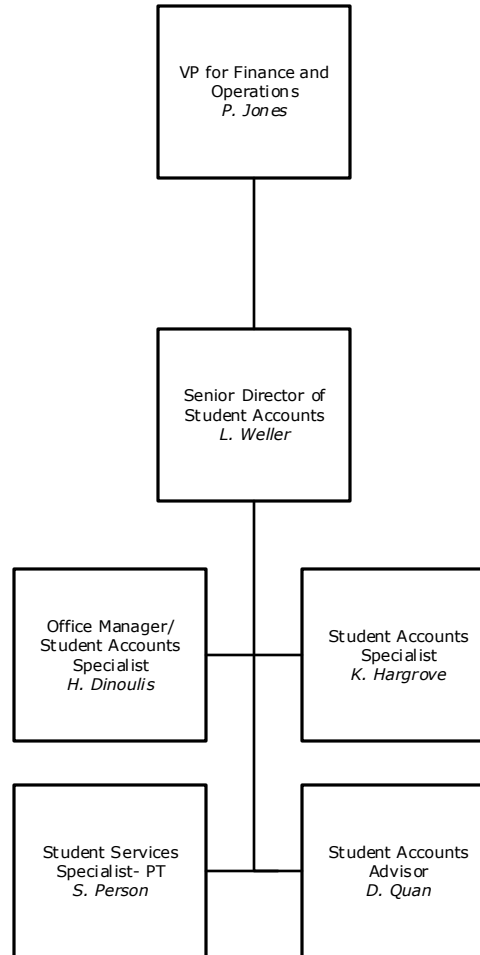




Division of Finance and Operations
Office of Human Resources



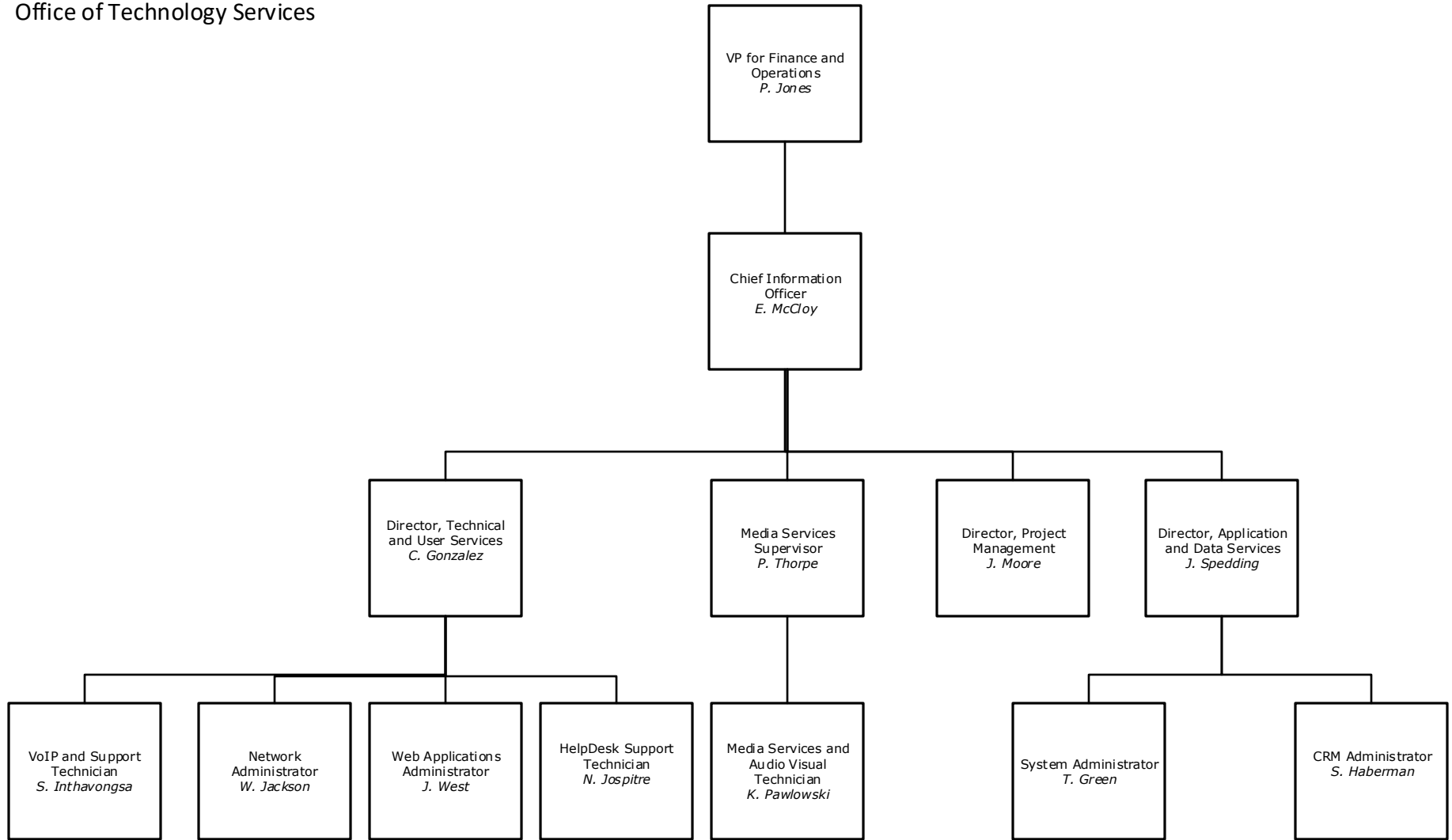
————— Indicates a Direct Report
- - - - - Indicates a Dual Report
· · · · · Indicates a Functional Report
* Position Reports Elsewhere



— Indicates a Direct Report
- - - Indicates a Dual Report
..... Indicates a Functional Report
* Position Reports Elsewhere



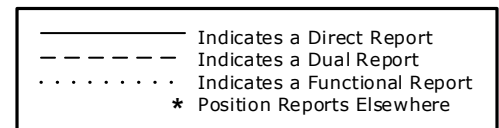
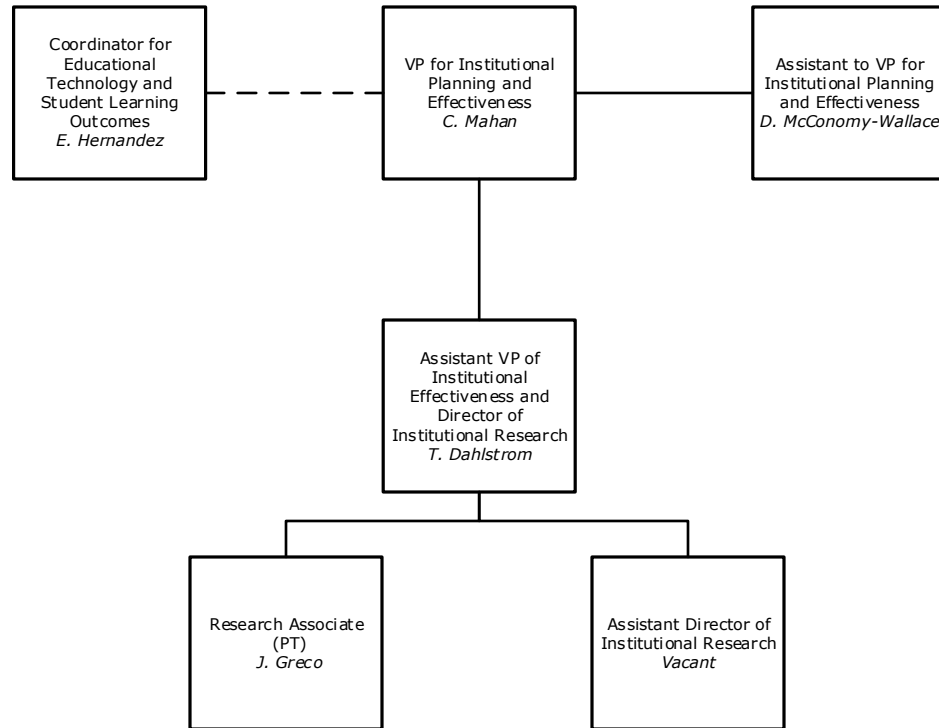
Division of Finance and Operations
Office of Technology Services



— Indicates a Direct Report
- - - - - Indicates a Dual Report
· · · · · Indicates a Functional Report
* Position Reports Elsewhere



Division of Institutional Planning and Effectiveness
Office of the Vice President for Institutional Planning and Effectiveness





Any changes should be reported to the Office of Human Resources
kbernard@eastern.edu

Revised: October 15, 2020