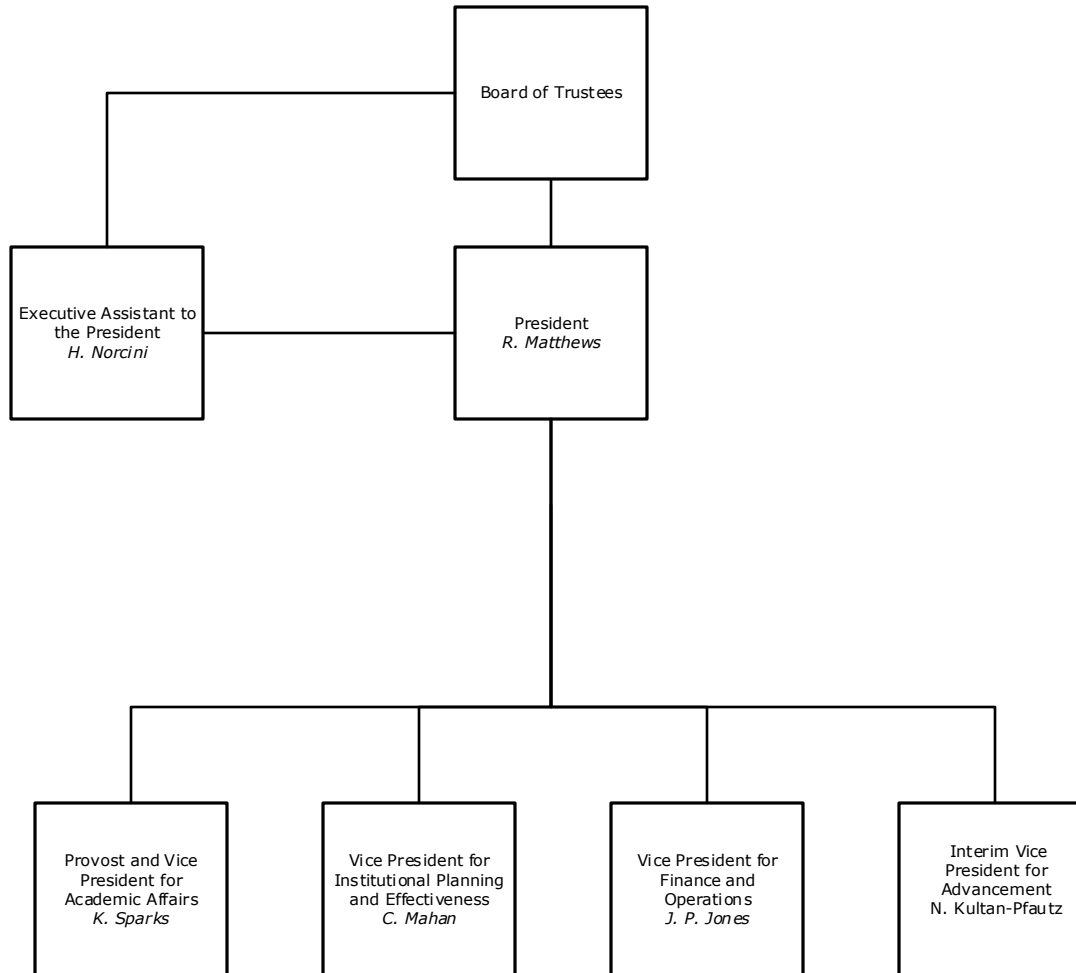


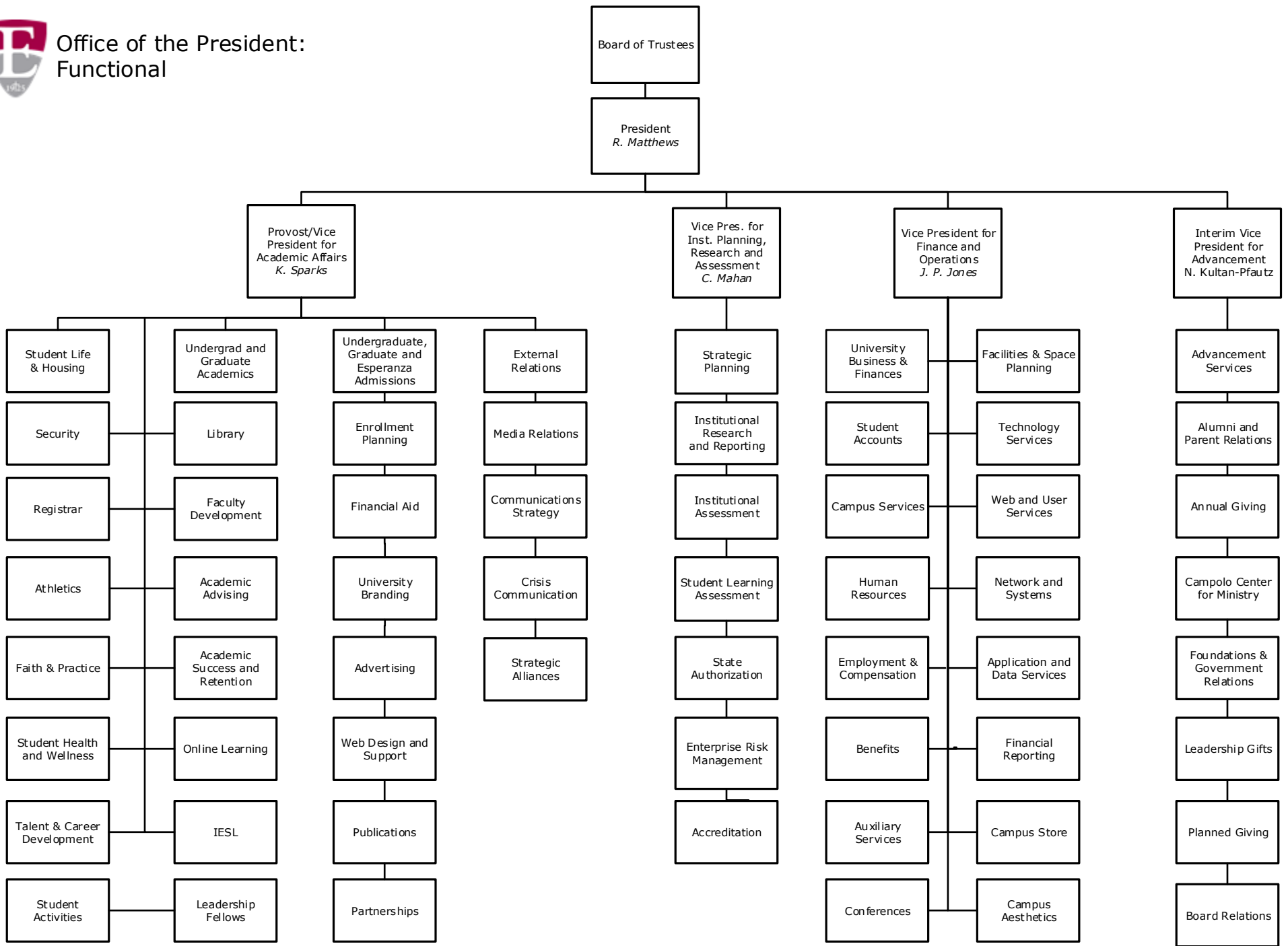


Eastern University
Office of the President



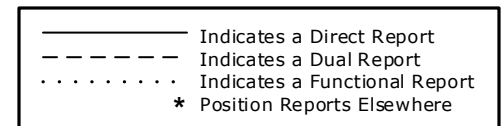
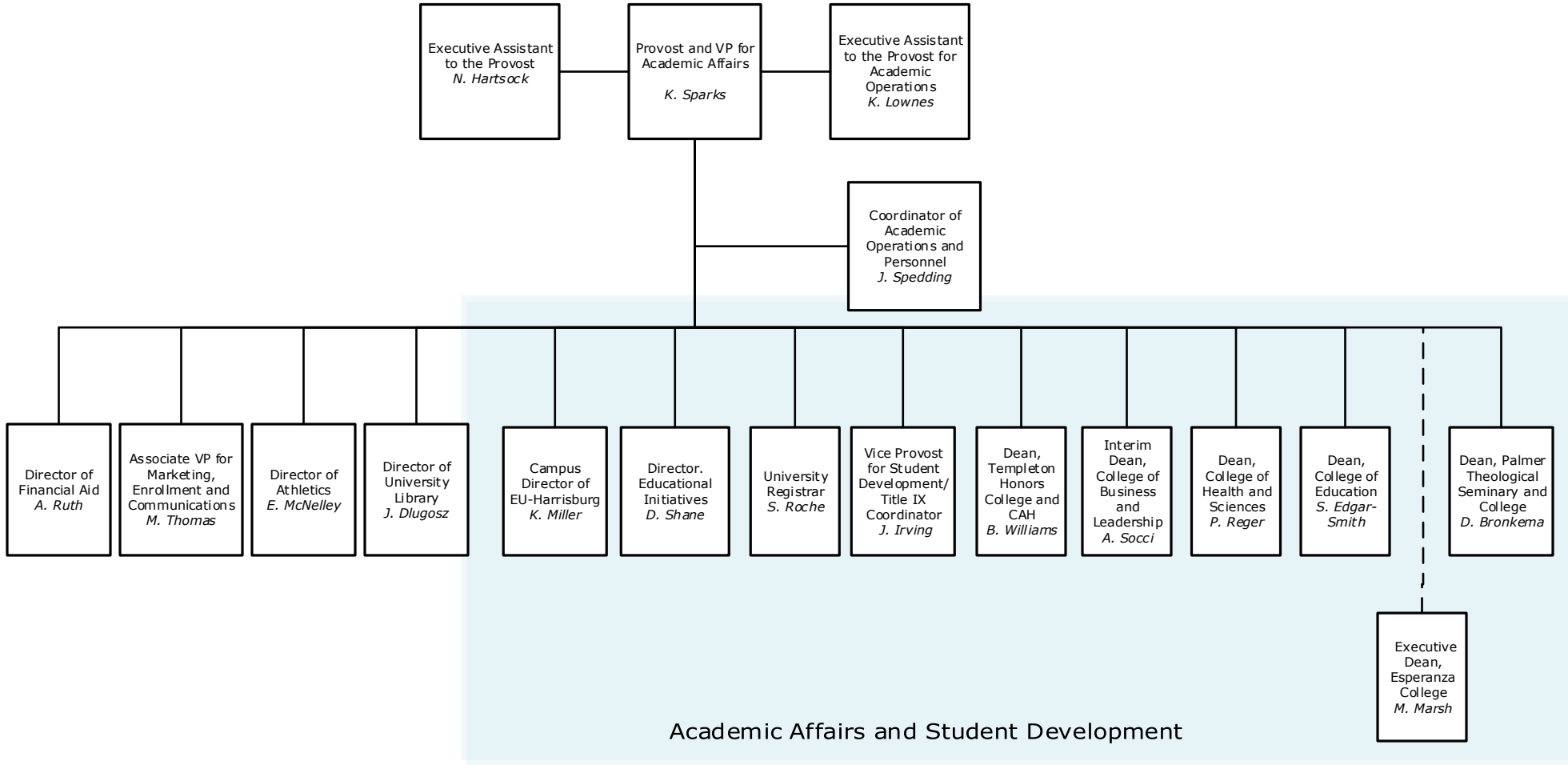


Office of the President:
Functional



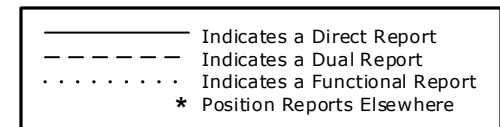
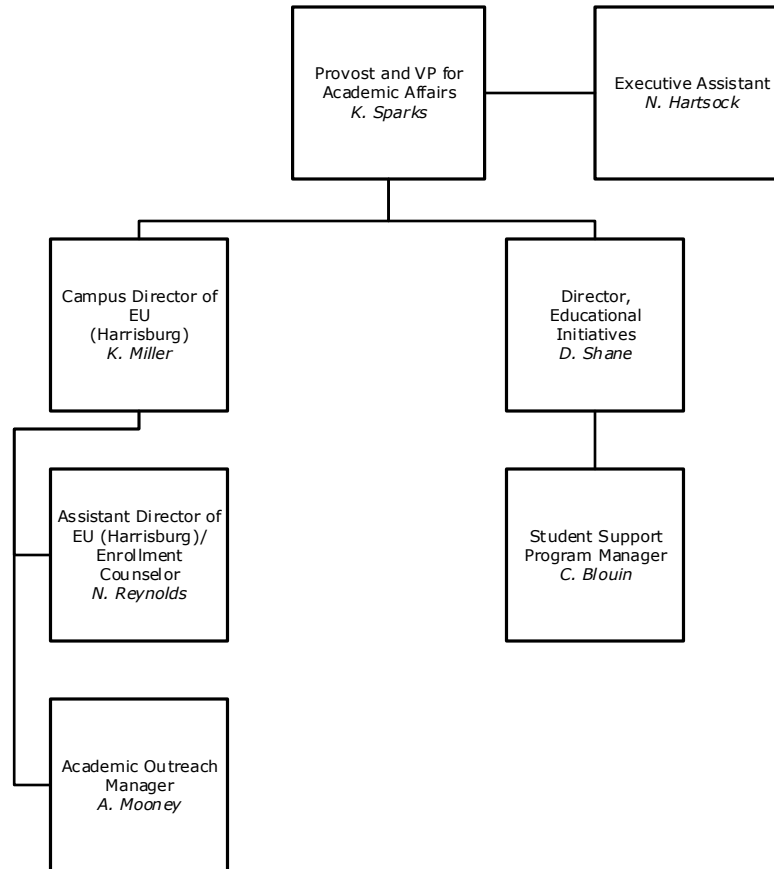


Office of the Provost and VP for Academic Affairs



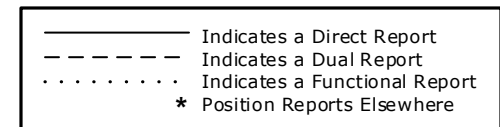
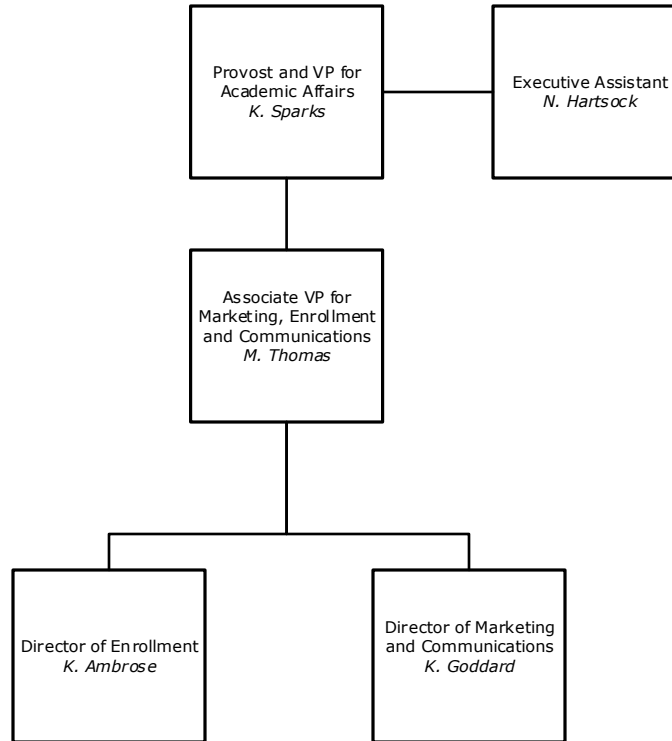


Office of the Provost and Vice President
for Academic Affairs
EU Harrisburg and Philadelphia



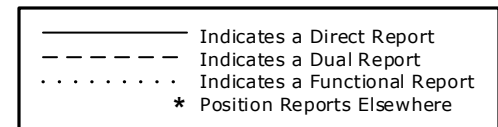
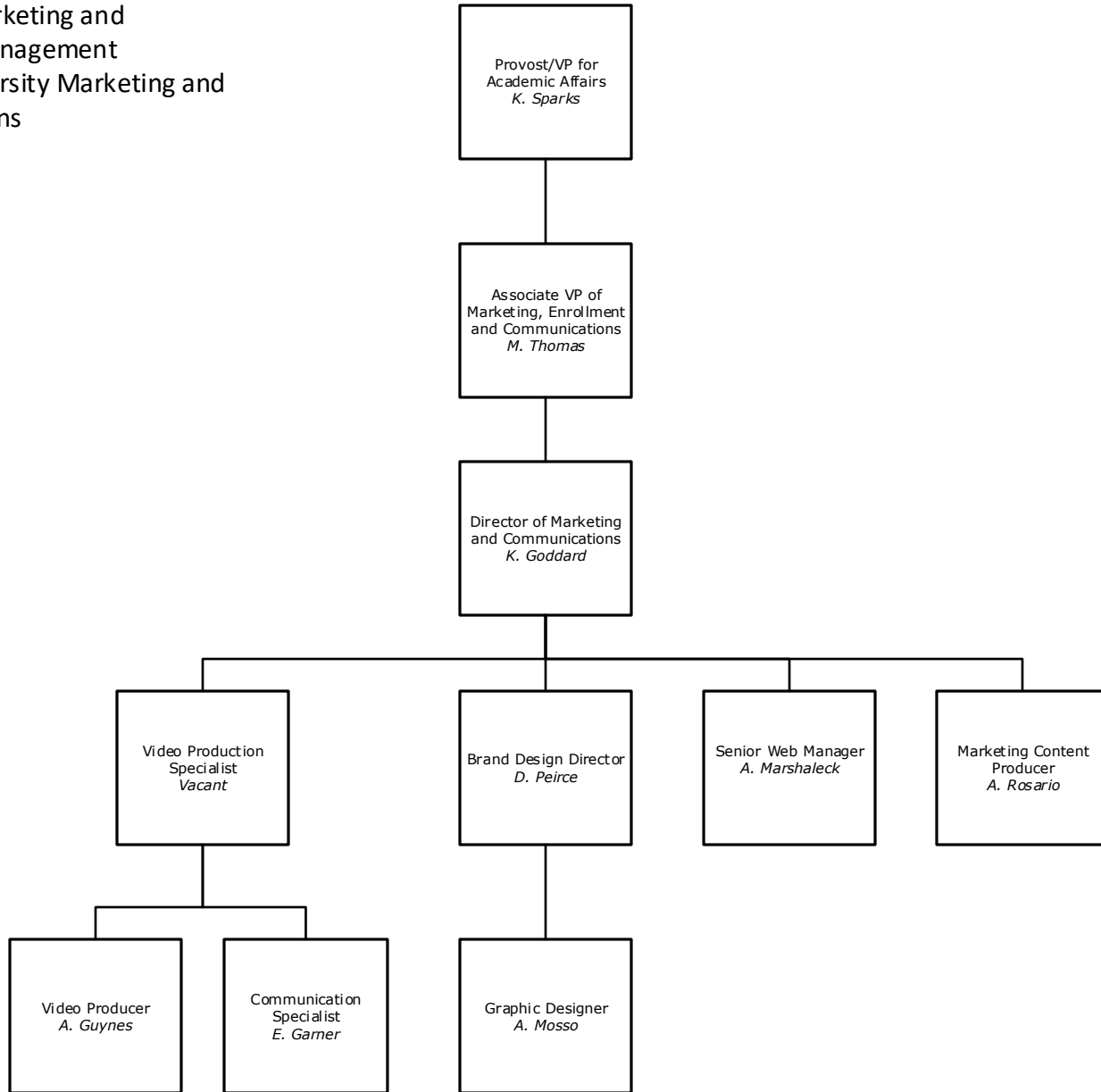


Office of the Provost and Vice President
for Academic Affairs
Division of Marketing and Enrollment
Management



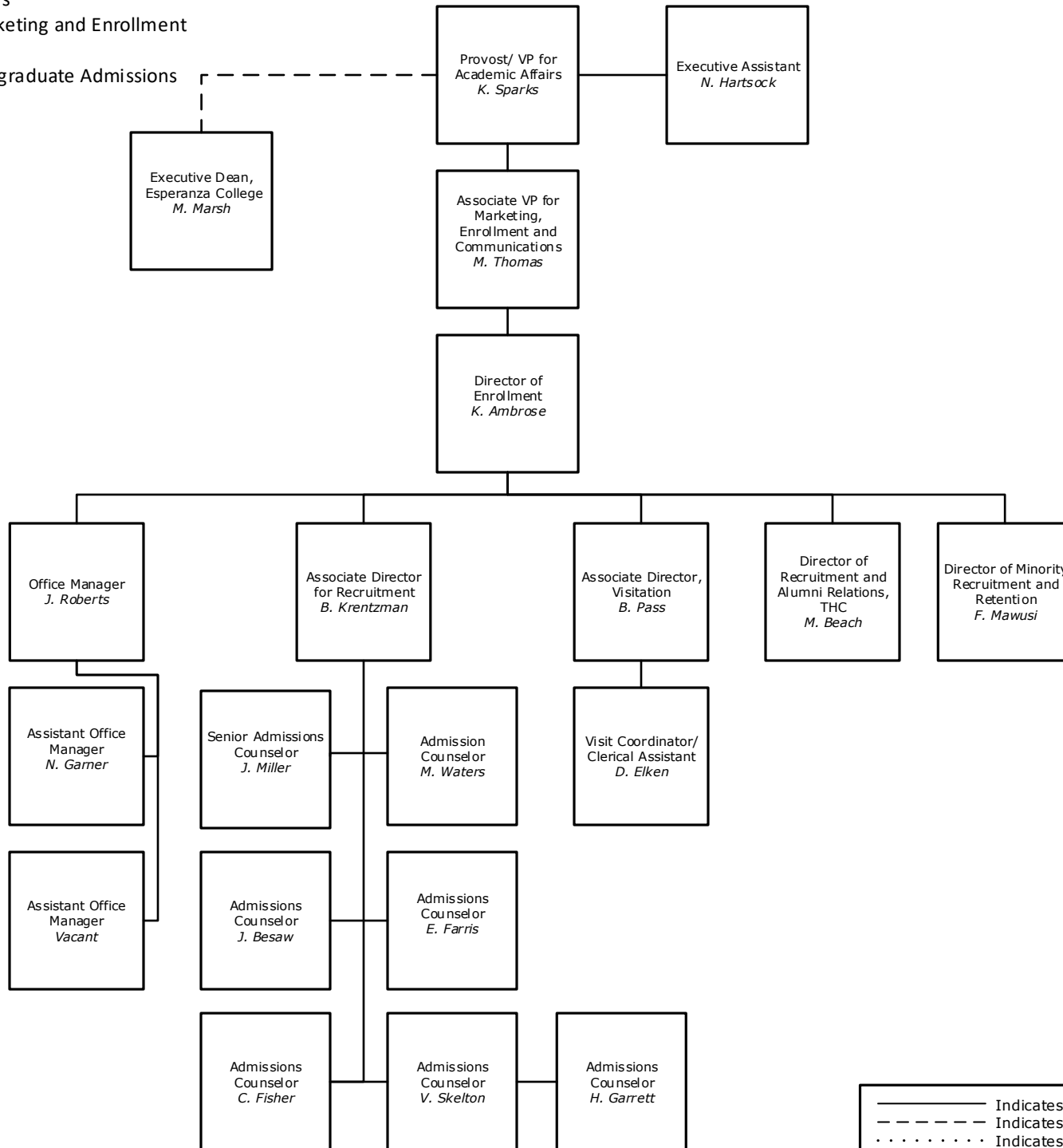


Office of the Provost and Vice President for
Academic Affairs
Division of Marketing and
Enrollment Management
Office of University Marketing and
Communications





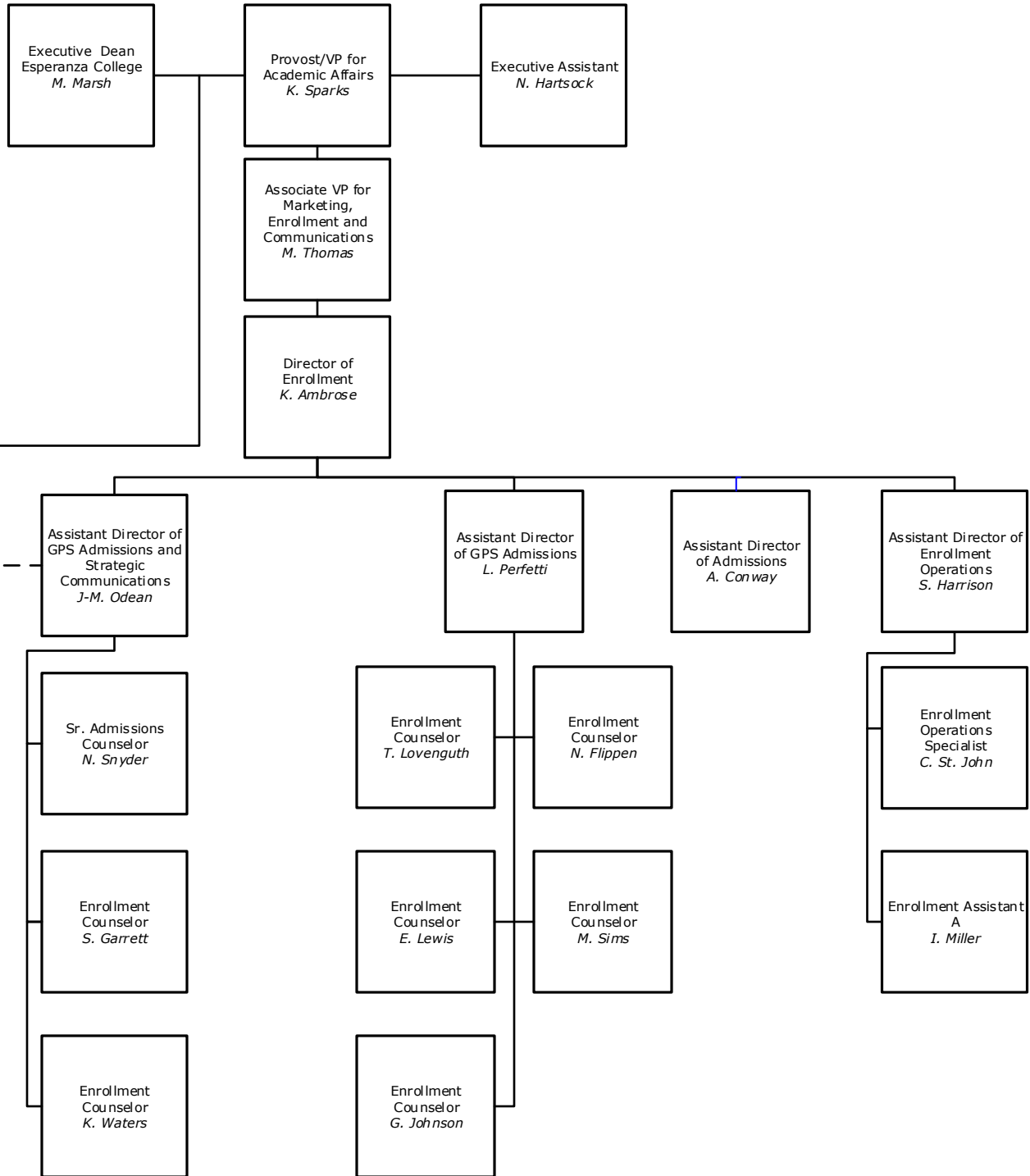
Office of the Provost and Vice President for
Academic Affairs
Division of Marketing and Enrollment
Management
Office of Undergraduate Admissions



————— Indicates a Direct Report
- - - - - Indicates a Dual Report
..... Indicates a Functional Report
* Position Reports Elsewhere



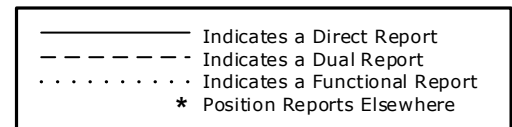
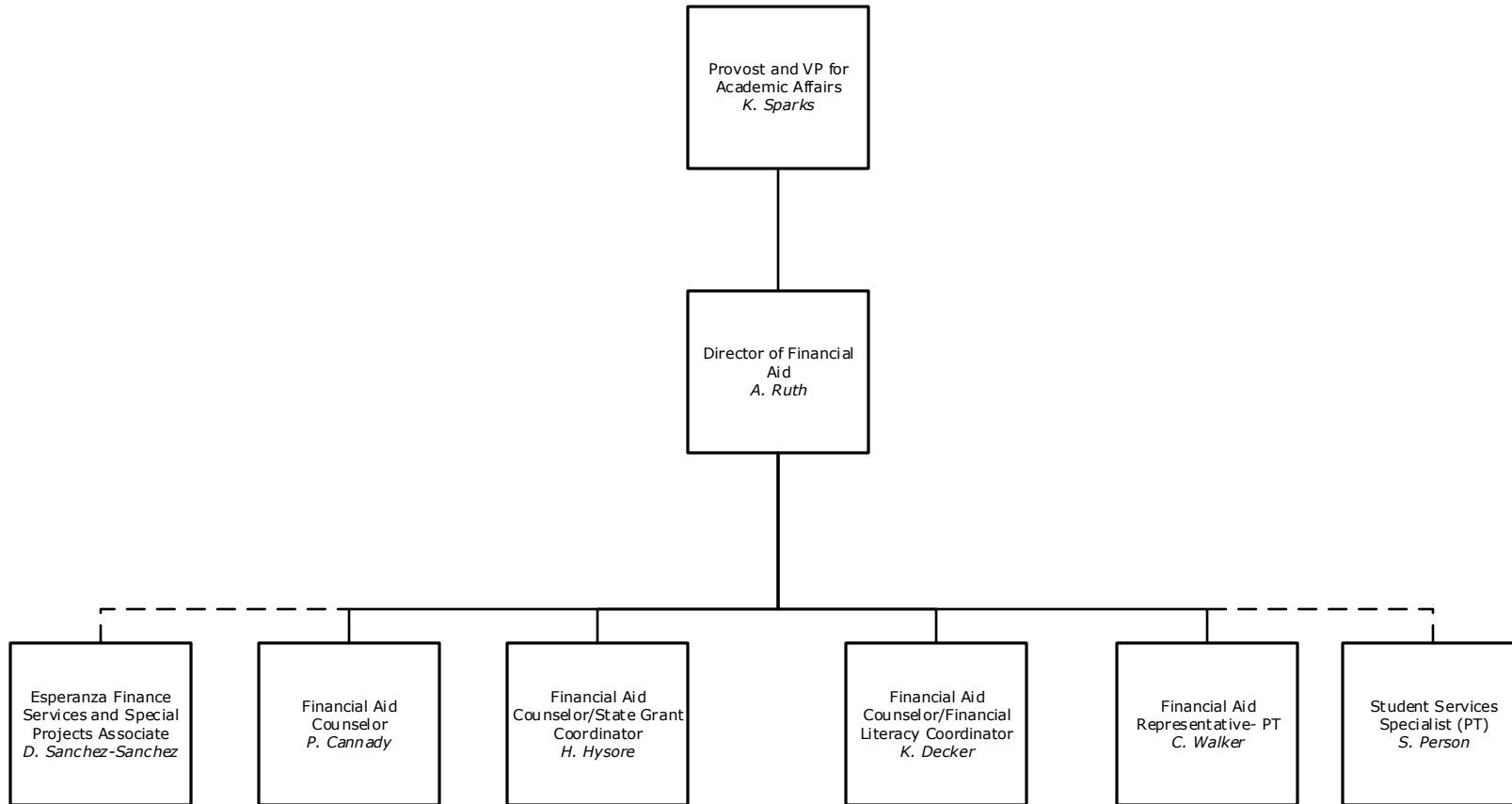
Office of the Provost and Vice President
for Academic Affairs
Division of Marketing and Enrollment
Management
Office of GPS Admissions



— Indicates a Direct Report
- - - Indicates a Dual Report
· · · · · Indicates a Functional Report
* Position Reports Elsewhere

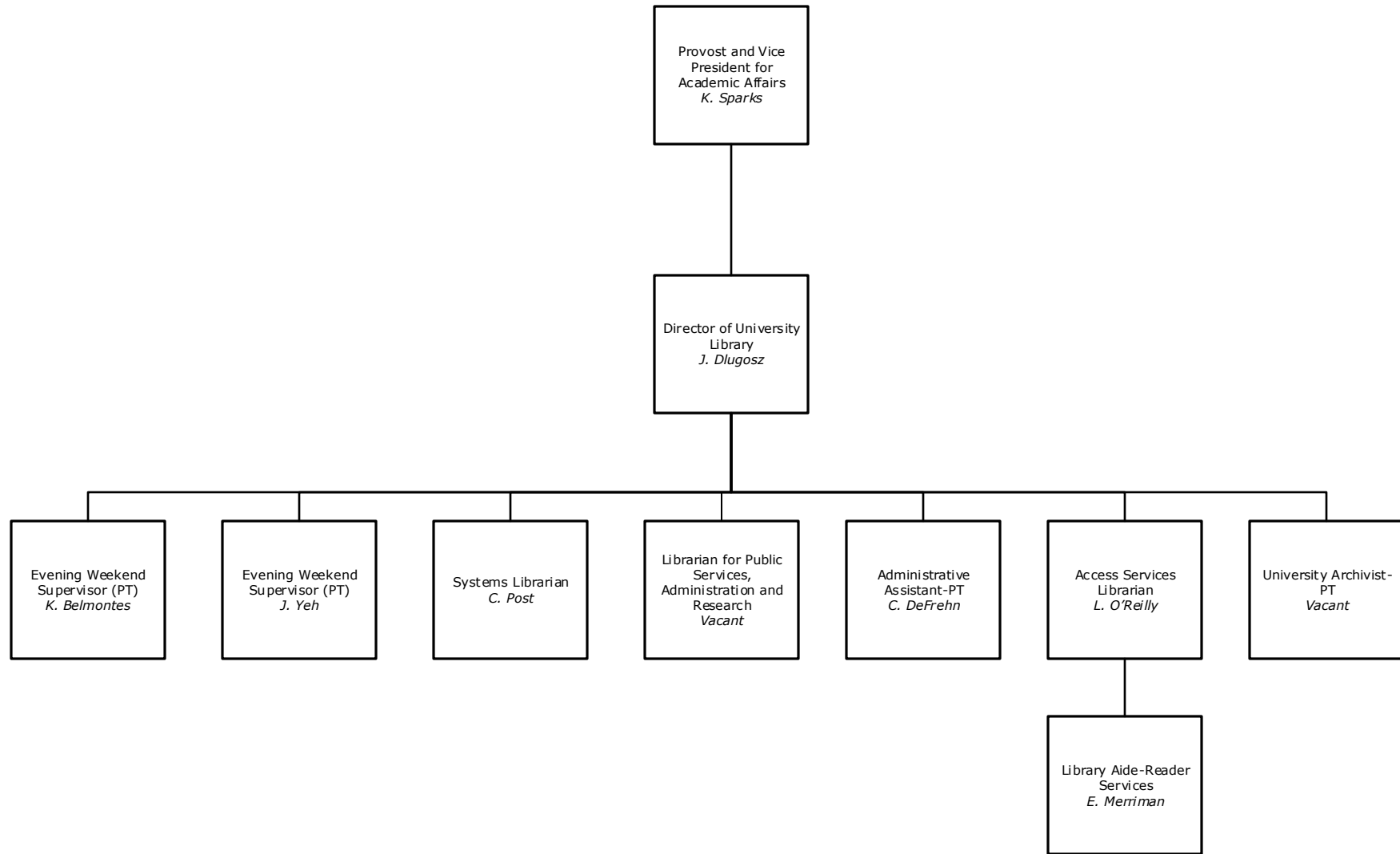


Office of the Provost and Vice President for
Academic Affairs
Office of Financial Aid





Division of Academic Affairs
Office of the Director of University Library



————— Indicates a Direct Report
- - - - - Indicates a Dual Report
..... Indicates a Functional Report
* Position Reports Elsewhere



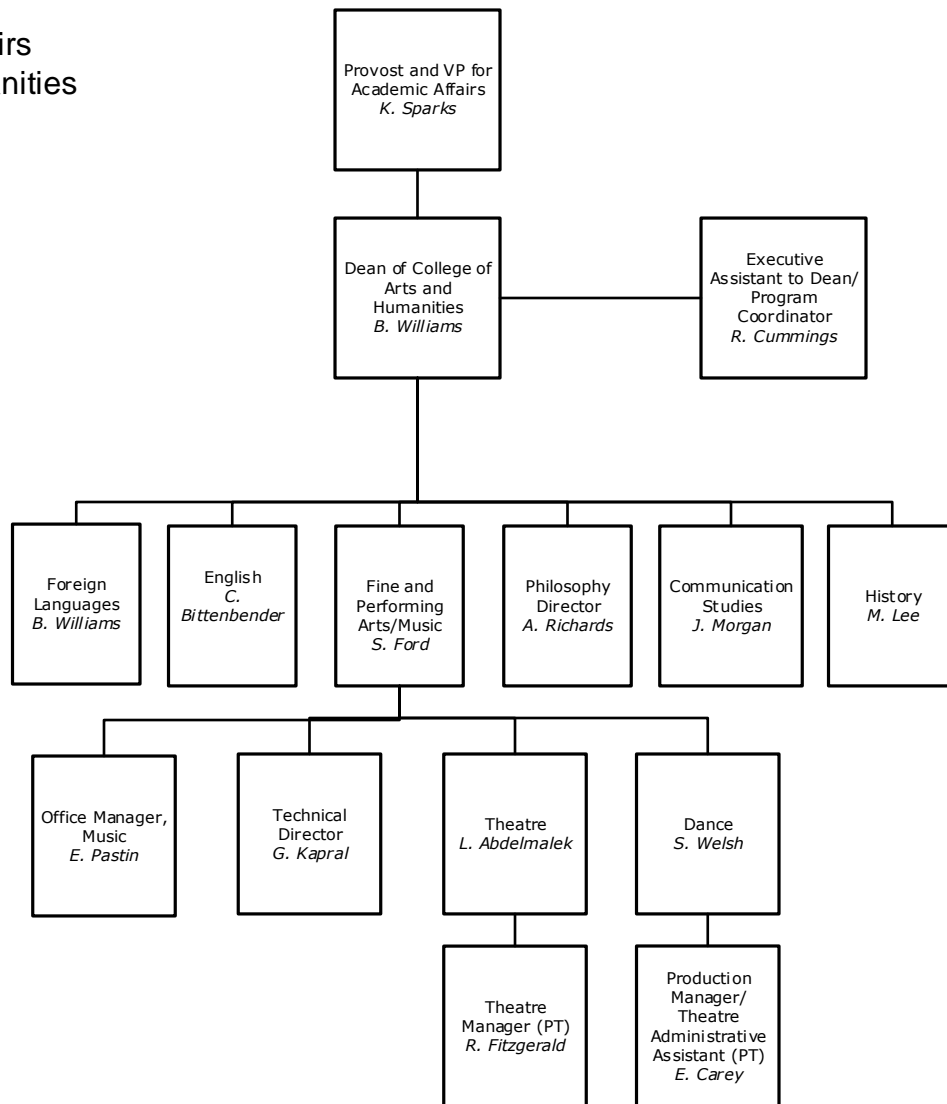
Faculty, Templeton Honors College

K. Cox
J. Dill
F. Putnam
K. Smith
B. Williams

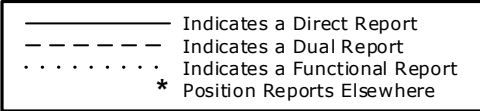
— Indicates a Direct Report
 - - - Indicates a Dual Report
 Indicates a Functional Report
 * Position Reports Elsewhere

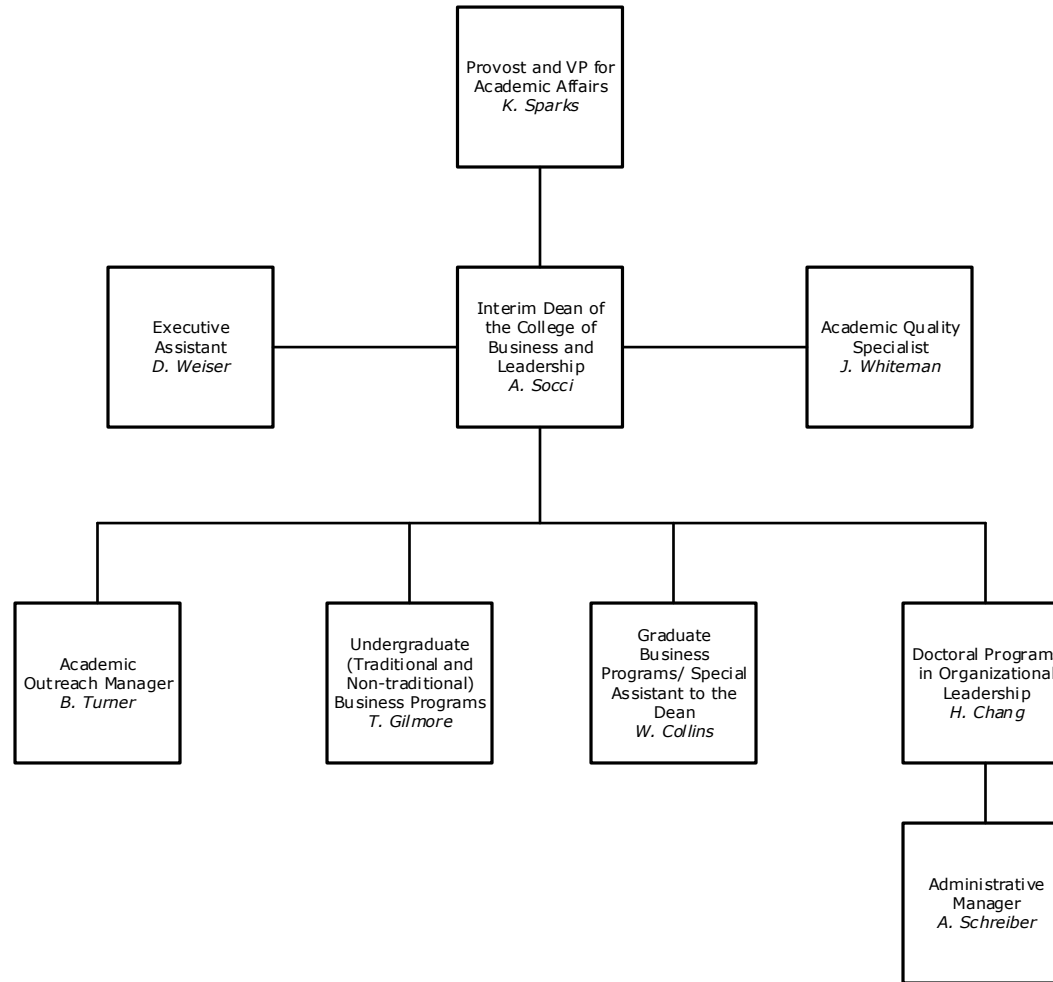


Division of Academic Affairs
College of Arts and Humanities



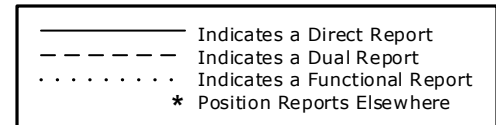
Faculty, College of Arts and Humanities		
L. Abdelmalek	S. Ford	S. McMonagle
C. Bittenbender	J. Hatch	J. Morgan
F. Brinkmann	K. Hayes	T. Moyer
C. Butynskyi	E. Jakuboski	A. Richards
P. Cary	H. Jung	W. Storm
	M. Lee	S. Welsh





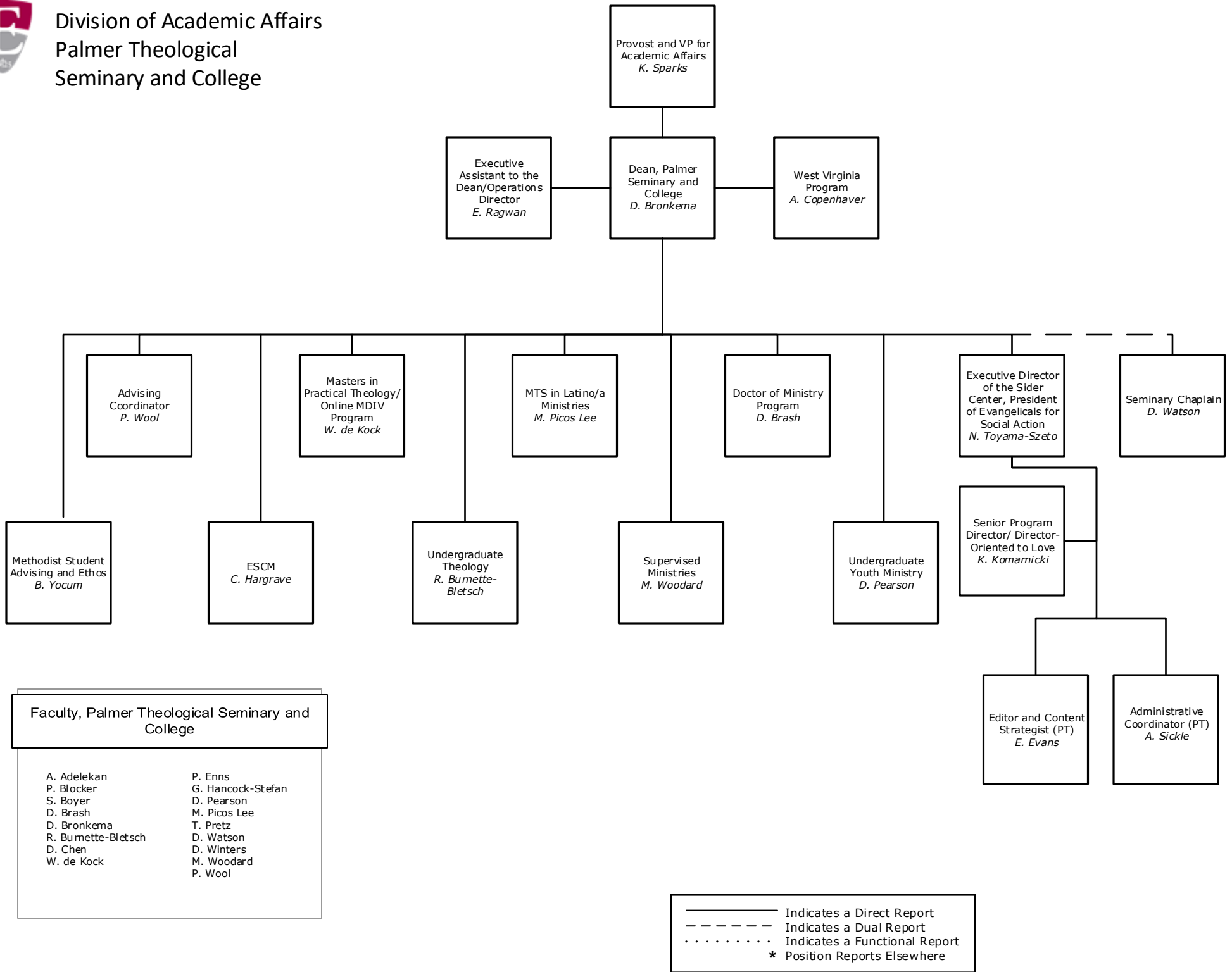
Faculty, College of Business and Leadership

L. Backues	K. Kispert
H. Chang	C. Lee-Chuvala
W. Collins	F. Oikelome
L. Elken	A. Socci
T. Gilmore	L. Thomas
D. Greenhalgh	V. Weigel
K. Hernandez	
M.J. Jones	



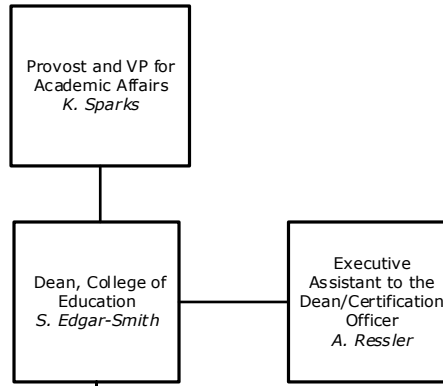


Division of Academic Affairs
Palmer Theological
Seminary and College



Faculty, Palmer Theological Seminary and College	
A. Adelekan	P. Enns
P. Blocker	G. Hancock-Stefan
S. Boyer	D. Pearson
D. Brash	M. Picos Lee
D. Bronkema	T. Pretz
R. Burnette-Bletsch	D. Watson
D. Chen	D. Winters
W. de Kock	M. Woodard
	P. Wool

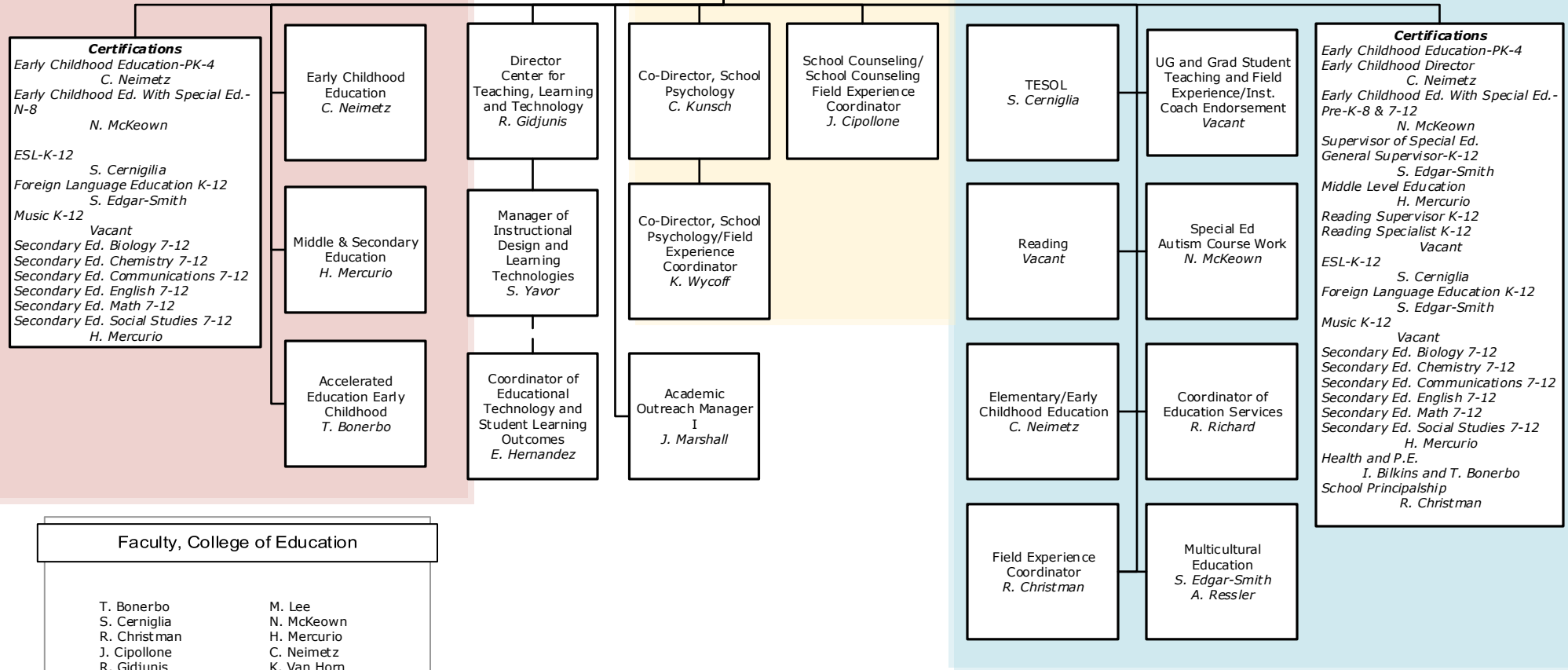
————— Indicates a Direct Report
 - - - - - Indicates a Dual Report
 Indicates a Functional Report
 * Position Reports Elsewhere



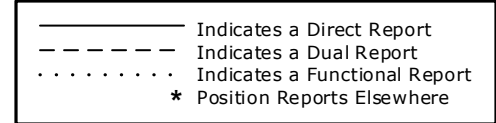
Undergraduate Programs in Education-Loeb School
Chair: Vacant

School Counseling and School Psychology
Chair: C. Kunsch

Graduate Programs in Education
Chair: C. Neimetz

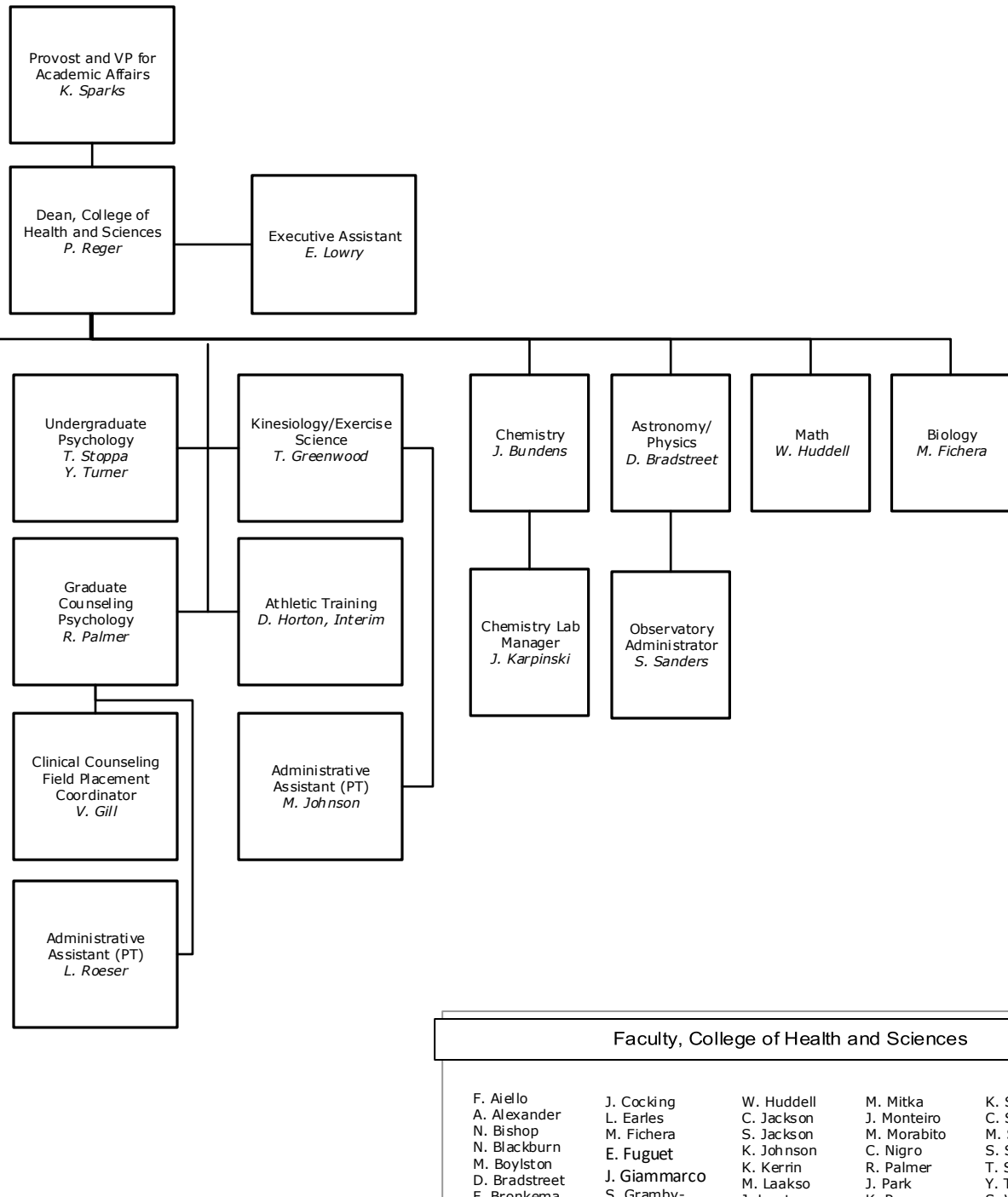


Faculty, College of Education	
T. Bonerbo	M. Lee
S. Cerniglia	N. McKeown
R. Christman	H. Mercurio
J. Cipollone	C. Neimetz
R. Gidjunis	K. Van Horn
C. Kunsch	K. Wycoff





Division of Academic Affairs
College of Health and Sciences

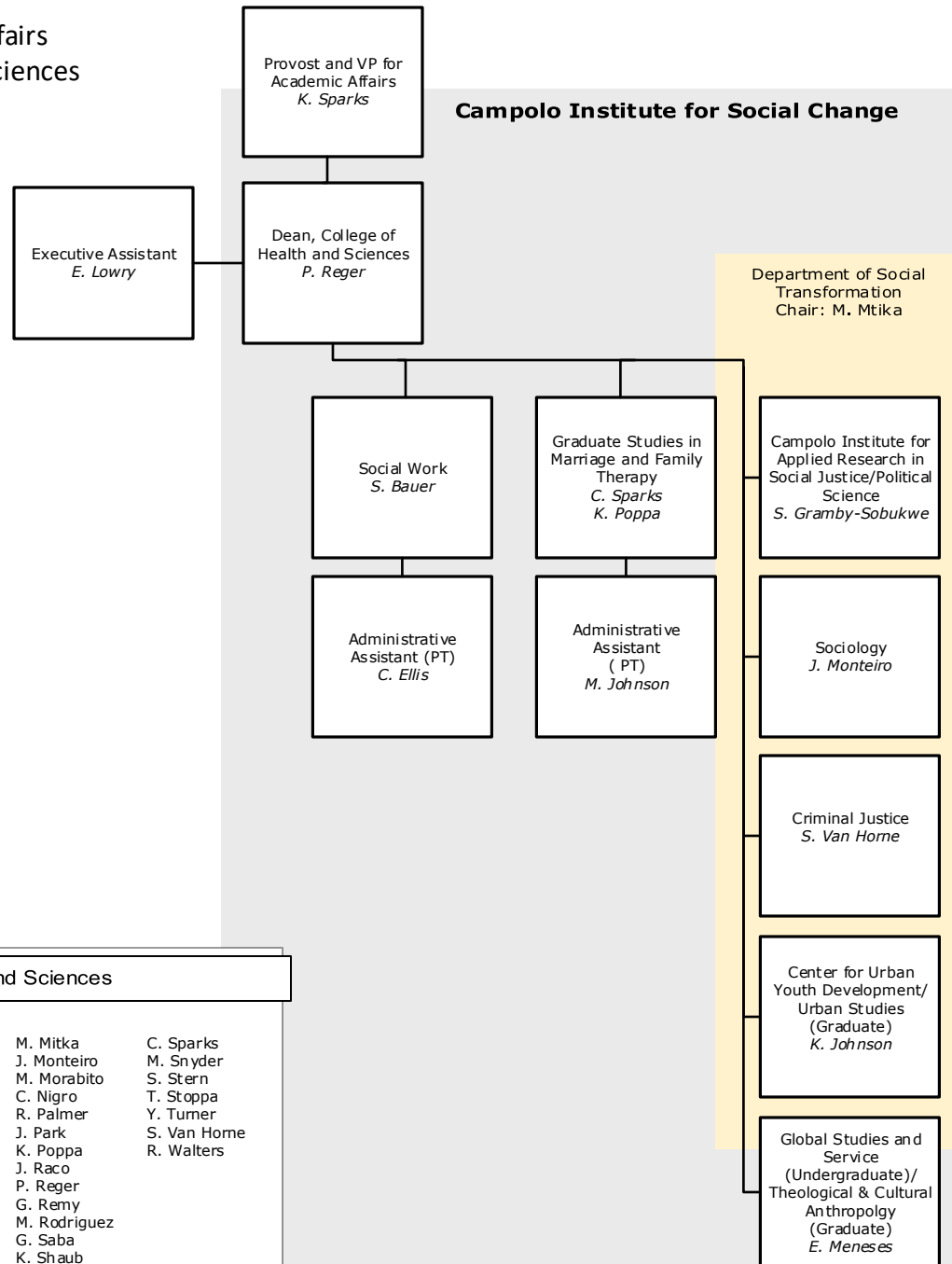


————— Indicates a Direct Report
 - - - - - Indicates a Dual Report
 Indicates a Functional Report
 * Position Reports Elsewhere

Faculty, College of Health and Sciences				
F. Aiello	J. Cocking	W. Huddell	M. Mitka	K. Shaub
A. Alexander	L. Earles	C. Jackson	J. Monteiro	C. Sparks
N. Bishop	M. Fichera	S. Jackson	M. Morabito	M. Snyder
N. Blackburn	E. Fuguet	K. Johnson	C. Nigro	S. Stern
M. Boylston	J. Giammarco	K. Kerin	R. Palmer	T. Stoppa
D. Bradstreet	M. Laakso	M. Laakso	J. Park	Y. Turner
F. Bronkema	S. Gramby-Sobukwe	J. Lawton	K. Poppa	S. Van Horne
J. Bundens	T. Greenwood	G. Longo	J. Raco	R. Walters
C. Campbell	L. Gregory	W. Lutz	R. Reape	
M. Cawley	K. Guevin	N. McLallen	P. Reger	
W. Chung	R. Hays	E. Meneses	G. Remy	
	D. Horton	W. Mercier	M. Rodriguez	
		H. Miamiadian	G. Saba	

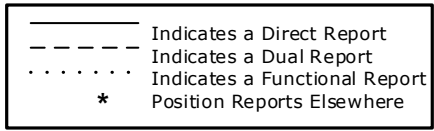


Campolo Institute for Social Change



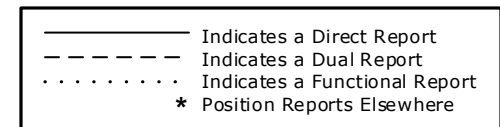
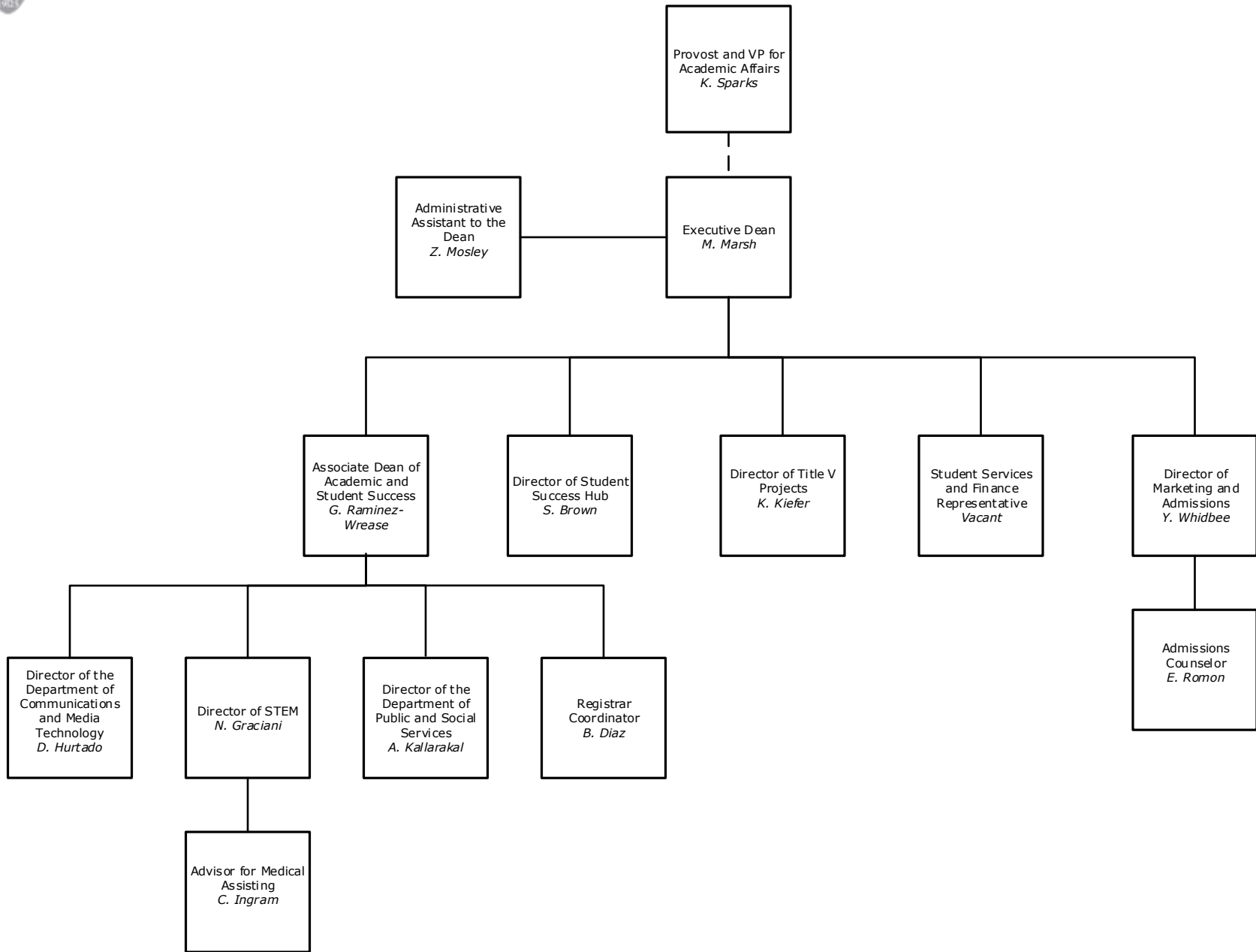
Faculty, College of Health and Sciences

- | | | | | |
|---------------|-------------------|--------------|--------------|--------------|
| F. Aiello | J. Cocking | W. Huddell | M. Mitka | C. Sparks |
| A. Alexander | L. Earles | C. Jackson | J. Monteiro | M. Snyder |
| N. Bishop | M. Fichera | S. Jackson | M. Morabito | S. Stern |
| N. Blackburn | E. Fuguet | K. Johnson | C. Nigro | T. Stoppa |
| M. Boylston | J. Giammarco | K. Kerrin | R. Palmer | Y. Turner |
| D. Bradstreet | S. Gramby-Sobukwe | M. Laakso | J. Park | S. Van Horne |
| F. Bronkema | T. Greenwood | J. Lawton | K. Poppa | R. Walters |
| J. Bundens | L. Gregory | G. Longo | J. Raco | |
| C. Campbell | L. Gregory | W. Lutz | P. Reger | |
| M. Cawley | K. Guevin | N. McLallen | G. Remy | |
| W. Chung | R. Hays | E. Meneses | M. Rodriguez | |
| | D. Horton | W. Mercier | G. Saba | |
| | | H. Miamidian | K. Shaub | |



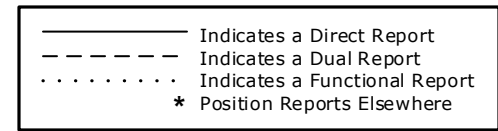
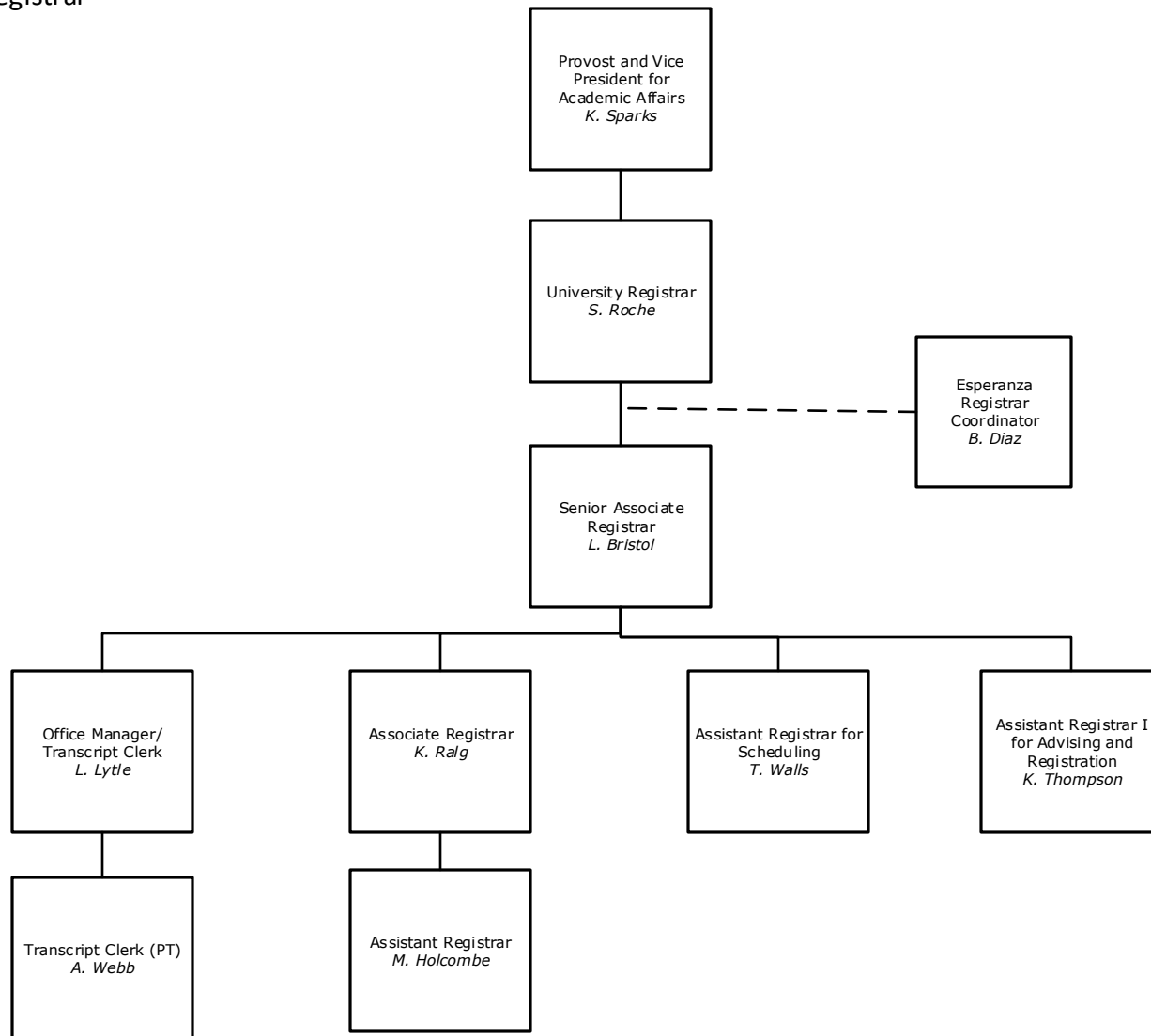


Division of Academic Affairs
Esperanza College



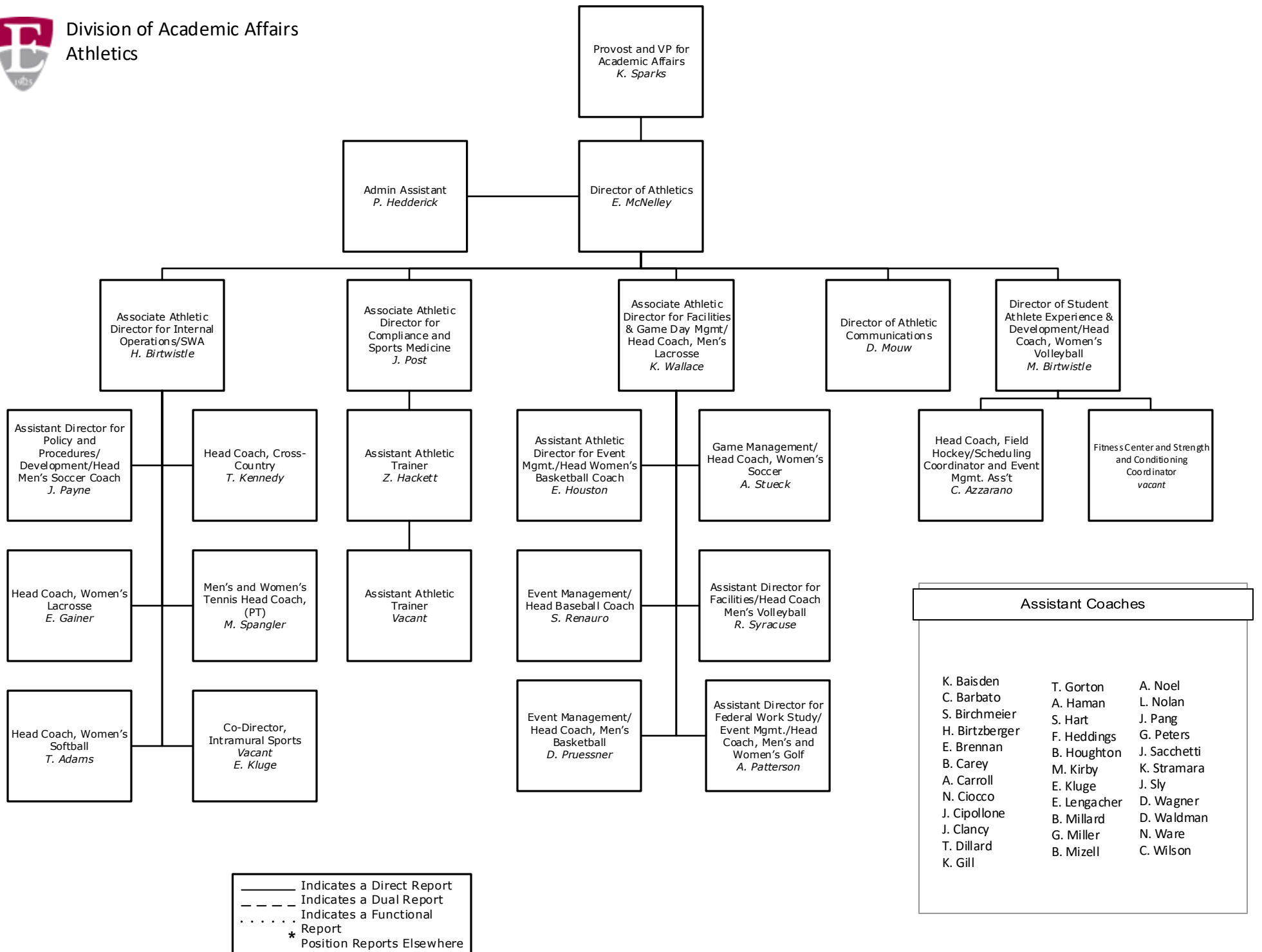


Division of Academic Affairs
Office of the Registrar





Division of Academic Affairs
Athletics

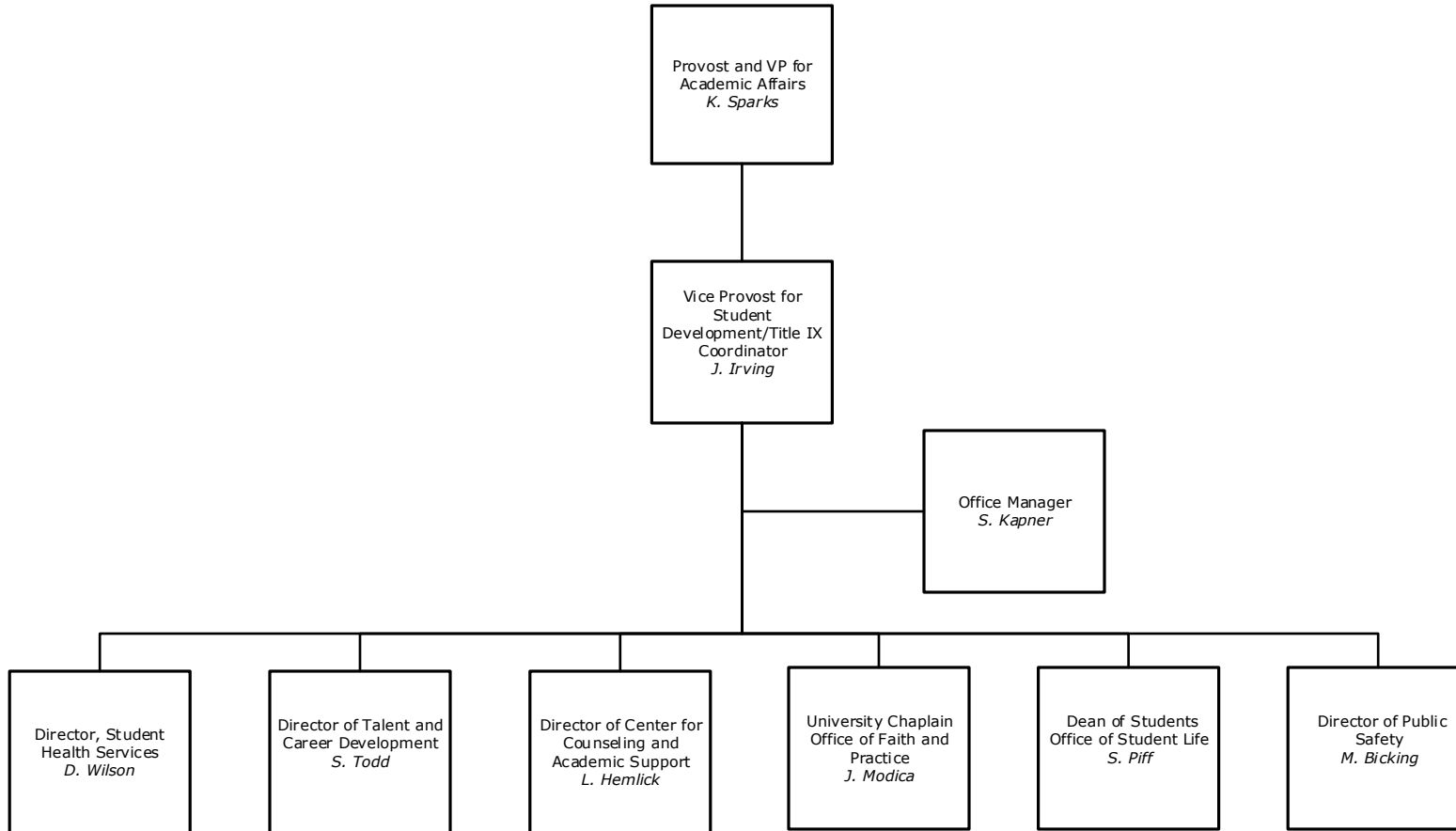


————— Indicates a Direct Report
 - - - - - Indicates a Dual Report
 Indicates a Functional Report
 * Position Reports Elsewhere

- | Assistant Coaches | | |
|-------------------|--------------|--------------|
| K. Baisden | T. Gorton | A. Noel |
| C. Barbato | A. Haman | L. Nolan |
| S. Birchmeier | S. Hart | J. Pang |
| H. Birtzberger | F. Heddings | G. Peters |
| E. Brennan | B. Houghton | J. Sacchetti |
| B. Carey | M. Kirby | K. Stramara |
| A. Carroll | E. Kluge | J. Sly |
| N. Ciocco | E. Lengacher | D. Wagner |
| J. Cipollone | B. Millard | D. Waldman |
| J. Clancy | G. Miller | N. Ware |
| T. Dillard | B. Mizell | C. Wilson |
| K. Gill | | |



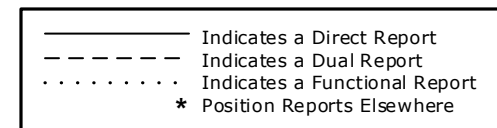
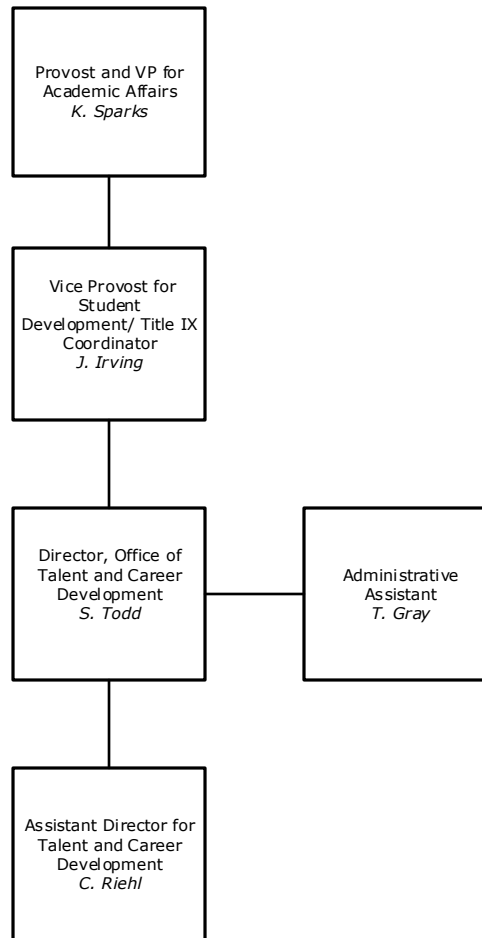
Division of Academic Affairs
Vice Provost for Student Development



————— Indicates a Direct Report
- - - - - Indicates a Dual Report
..... Indicates a Functional Report
* Position Reports Elsewhere

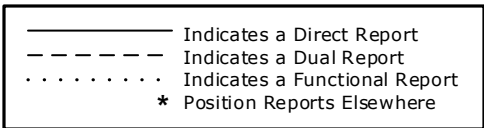
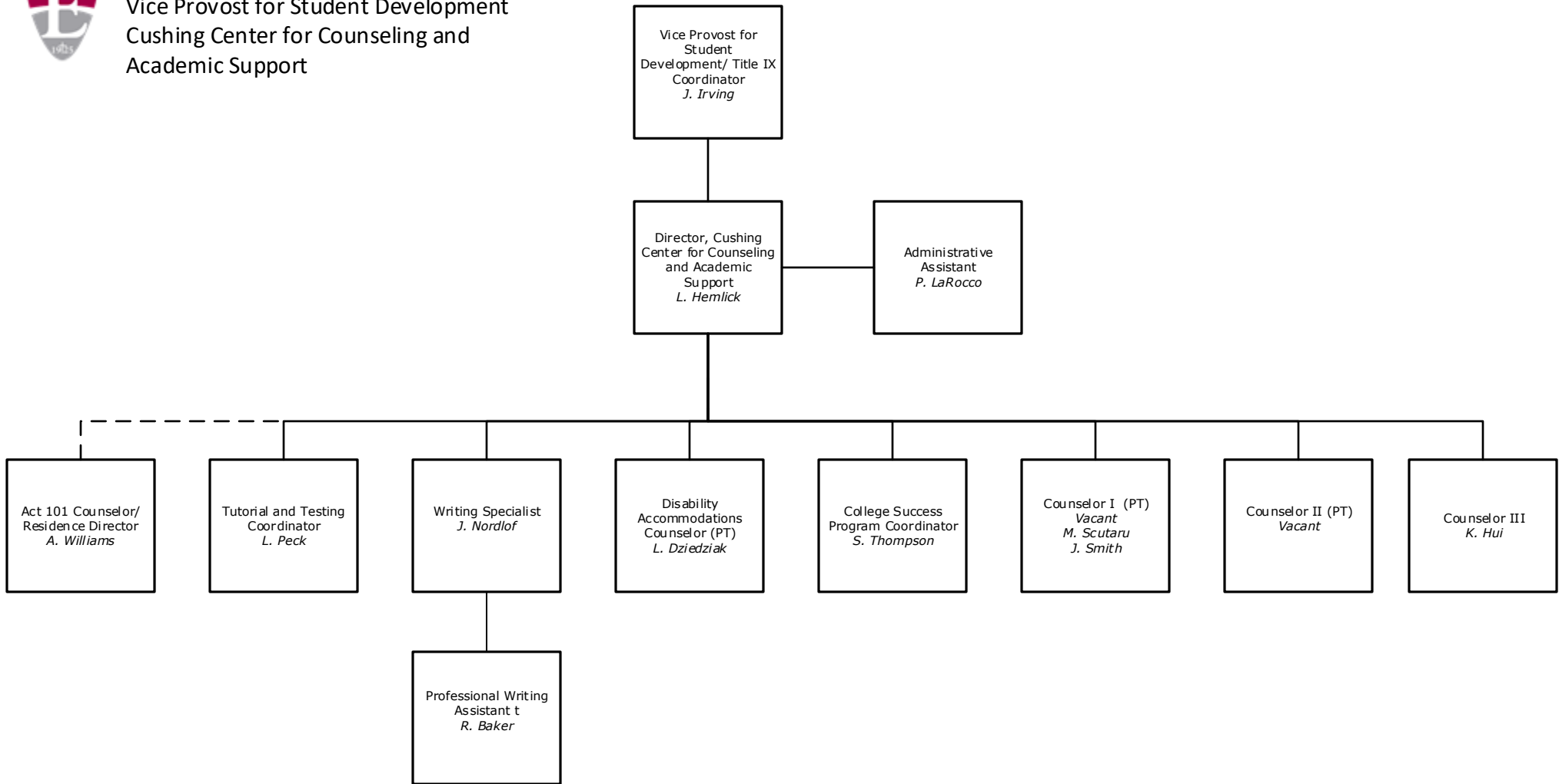


Division of Academic Affairs
Office of Talent and Career Development



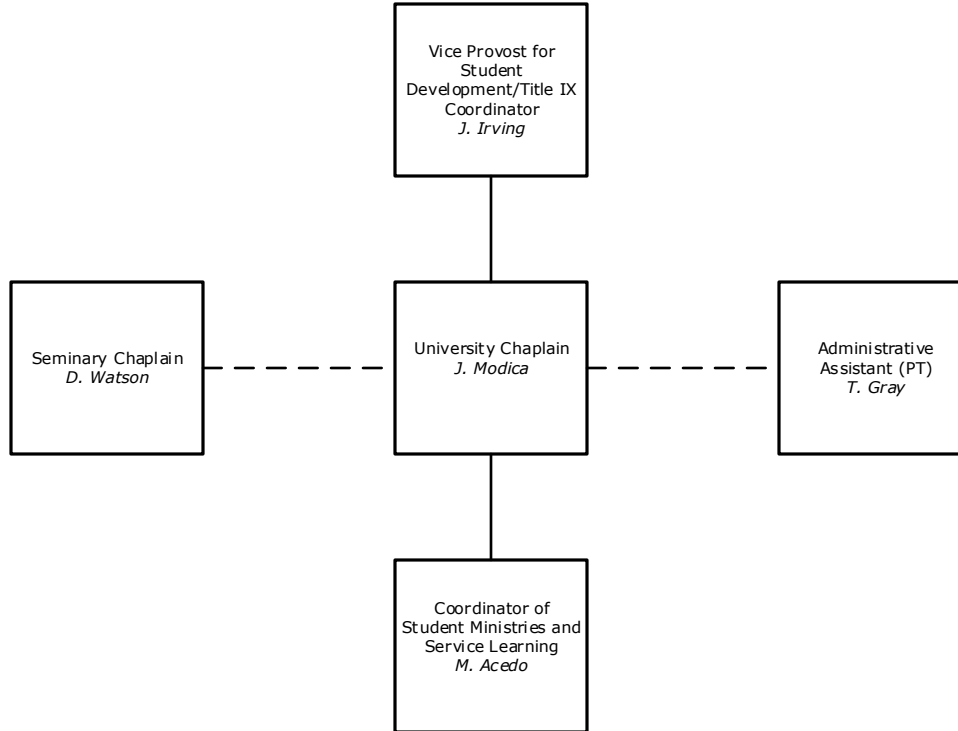


Division of Academic Affairs
Vice Provost for Student Development
Cushing Center for Counseling and
Academic Support





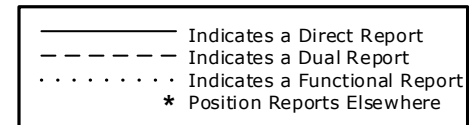
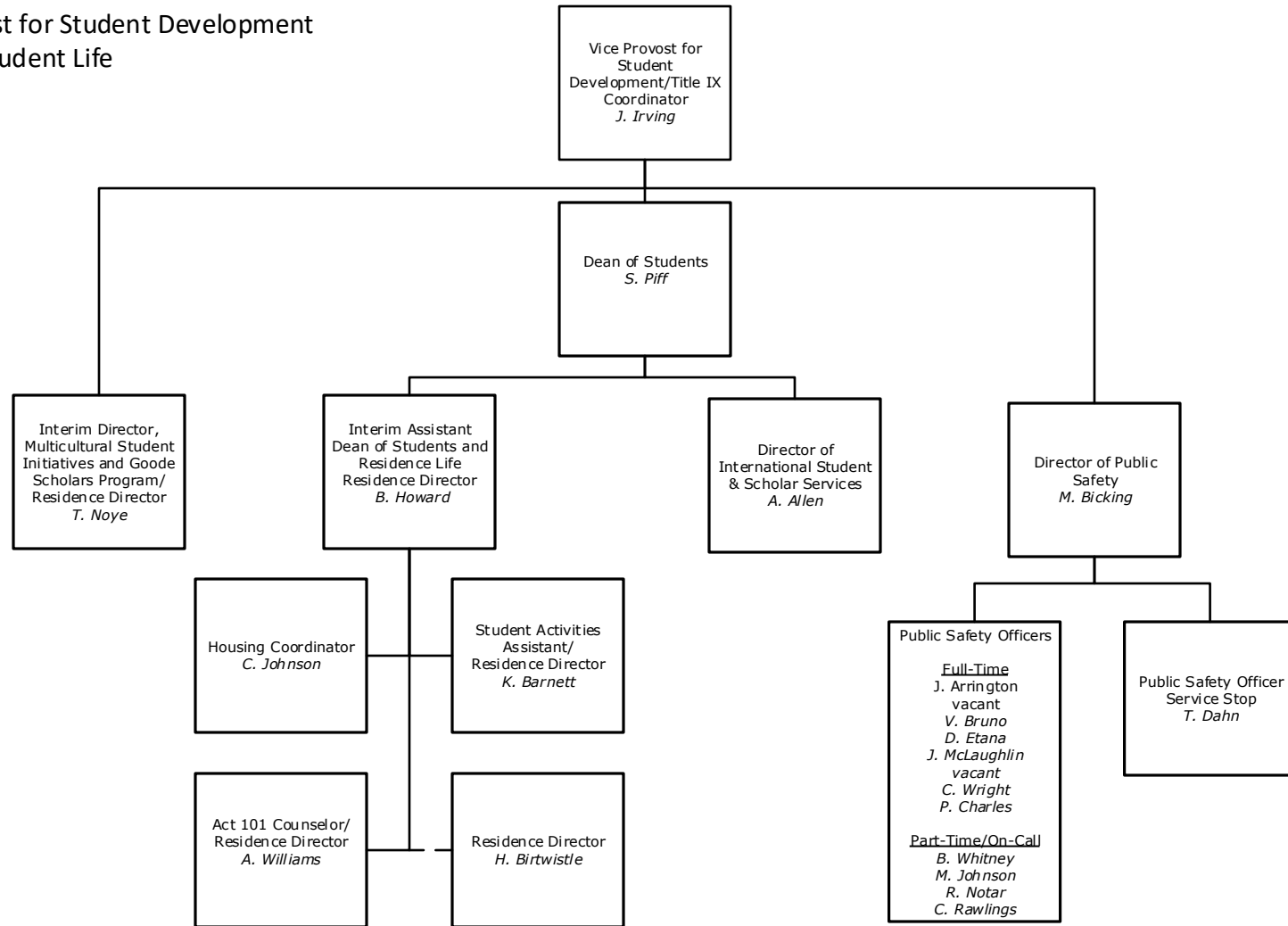
Division of Academic Affairs
Office of the Vice Provost for Student
Development
Office of Faith and Practice



— Indicates a Direct Report
- - - Indicates a Dual Report
..... Indicates a Functional Report
* Position Reports Elsewhere

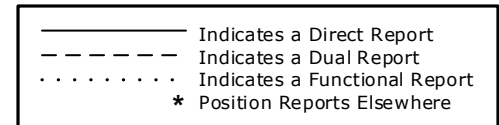
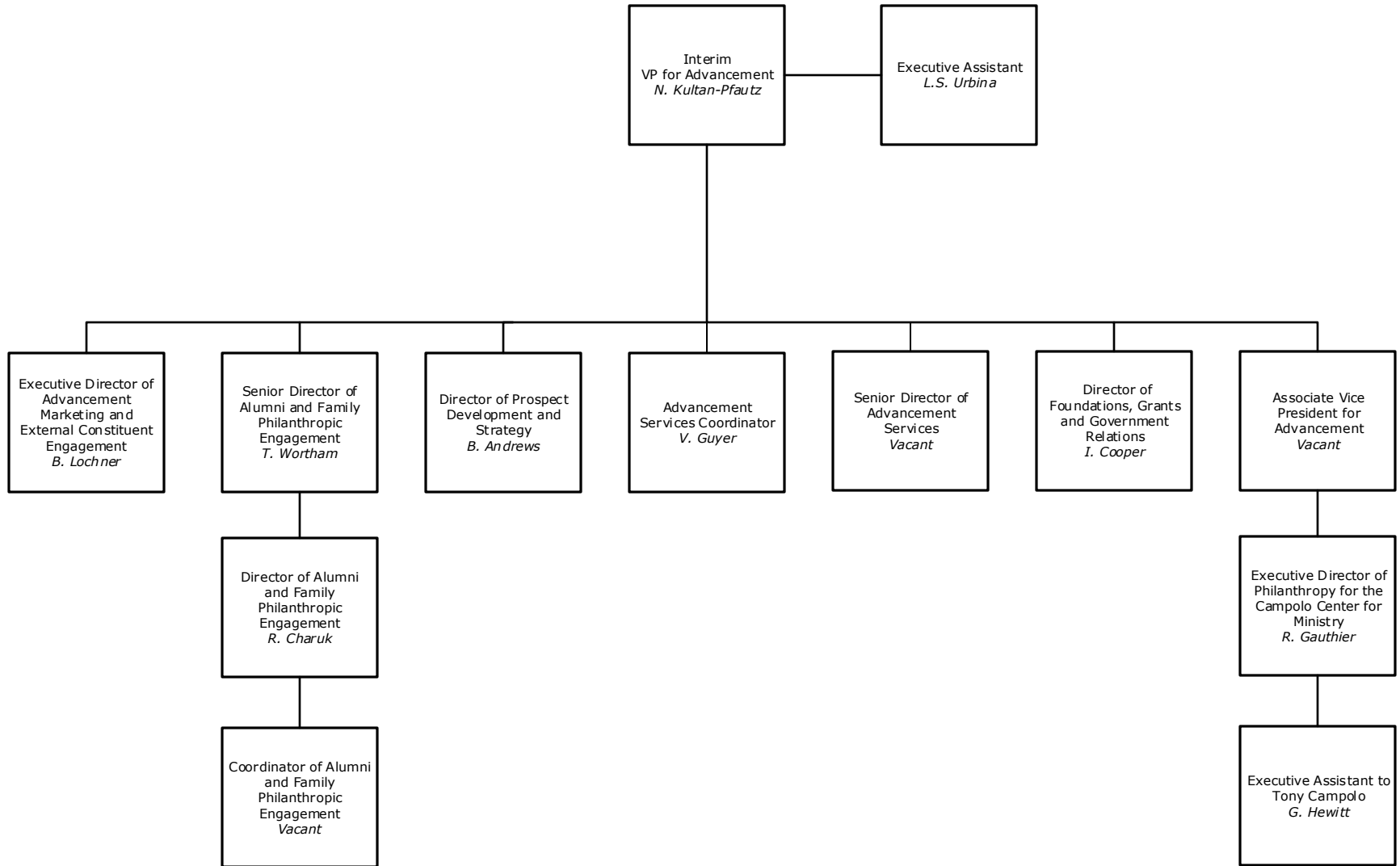


Division of Academic Affairs
Vice Provost for Student Development
Office of Student Life



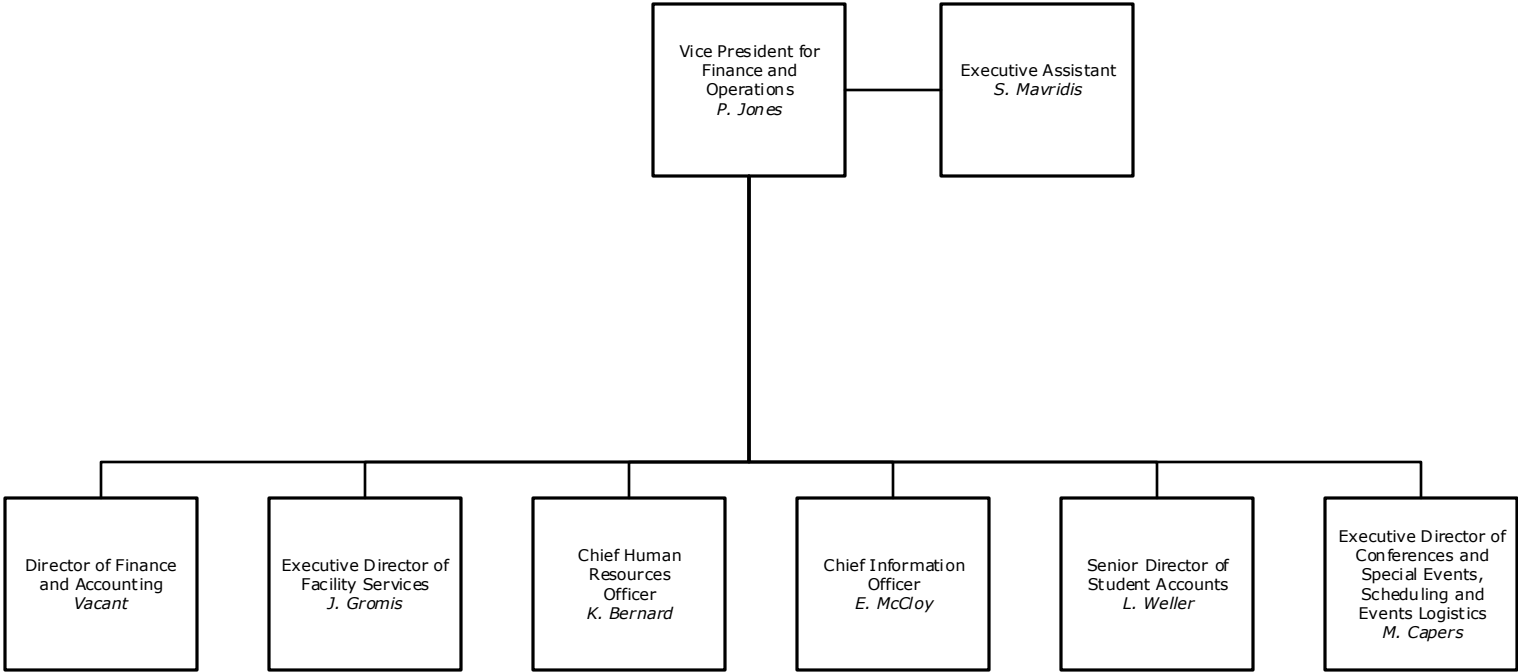


Division of Advancement
Office of the Vice President for Advancement





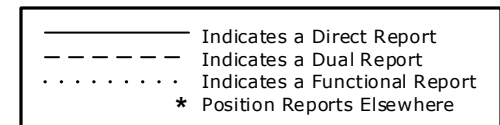
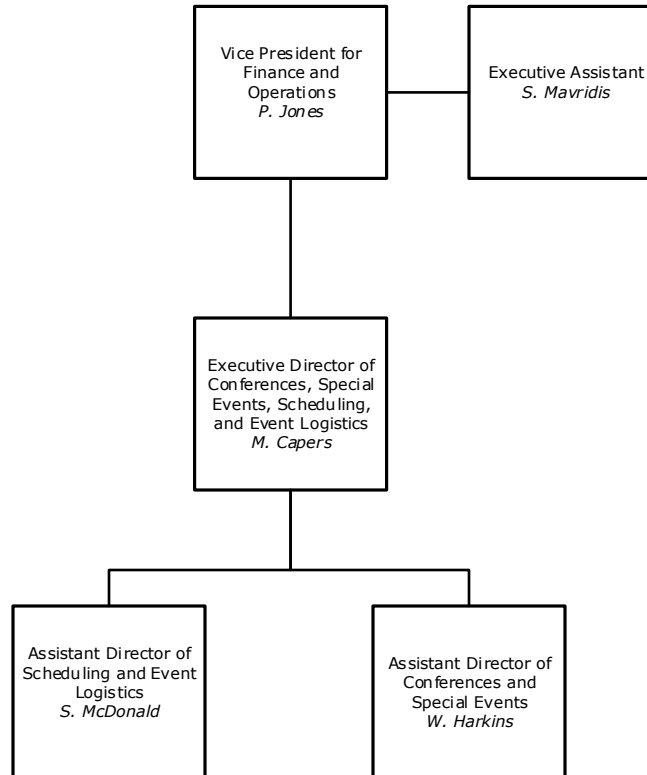
Division of Finance and Operations
Office of the Vice President for Finance and
Operations



— Indicates a Direct Report
- - - Indicates a Dual Report
..... Indicates a Functional Report
* Position Reports Elsewhere

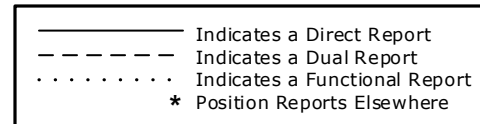
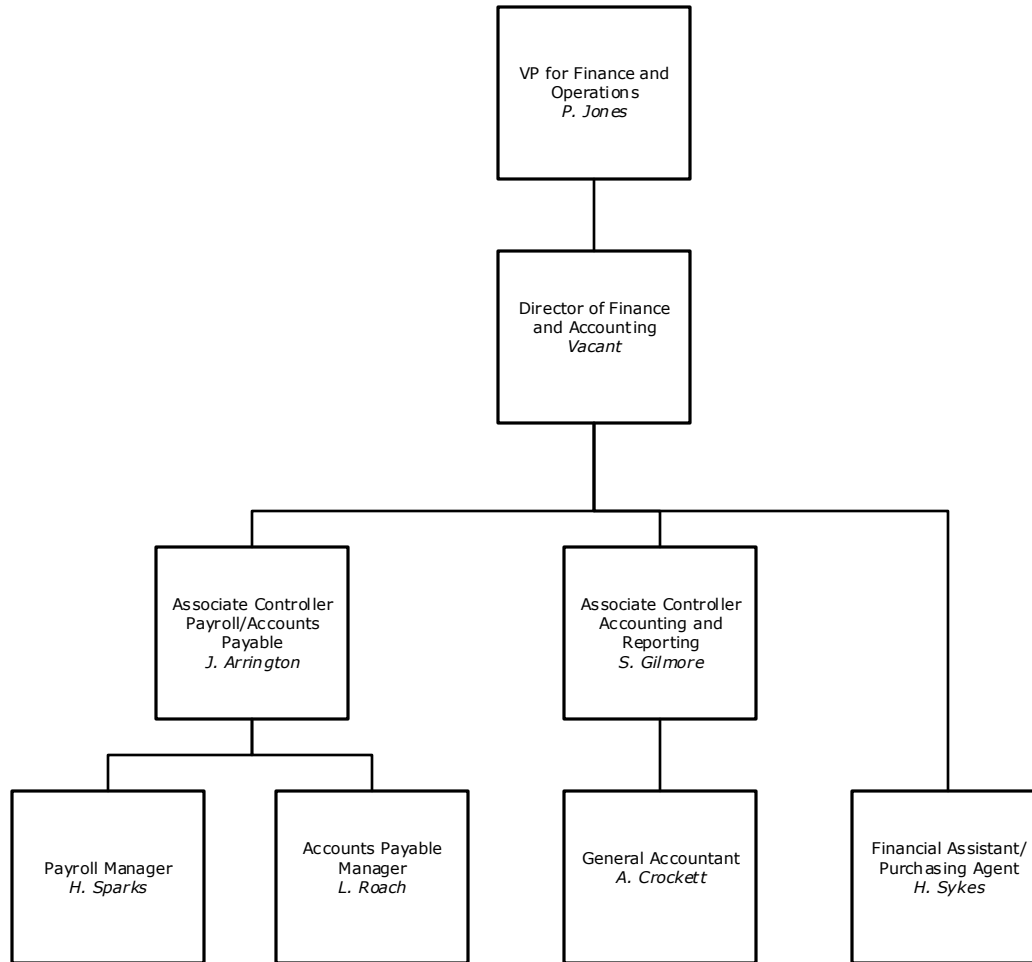


Division of Finance and Operations
Office of Conferences and Special Events



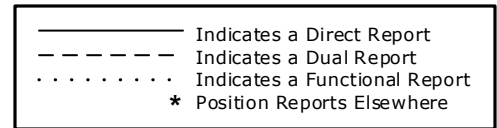
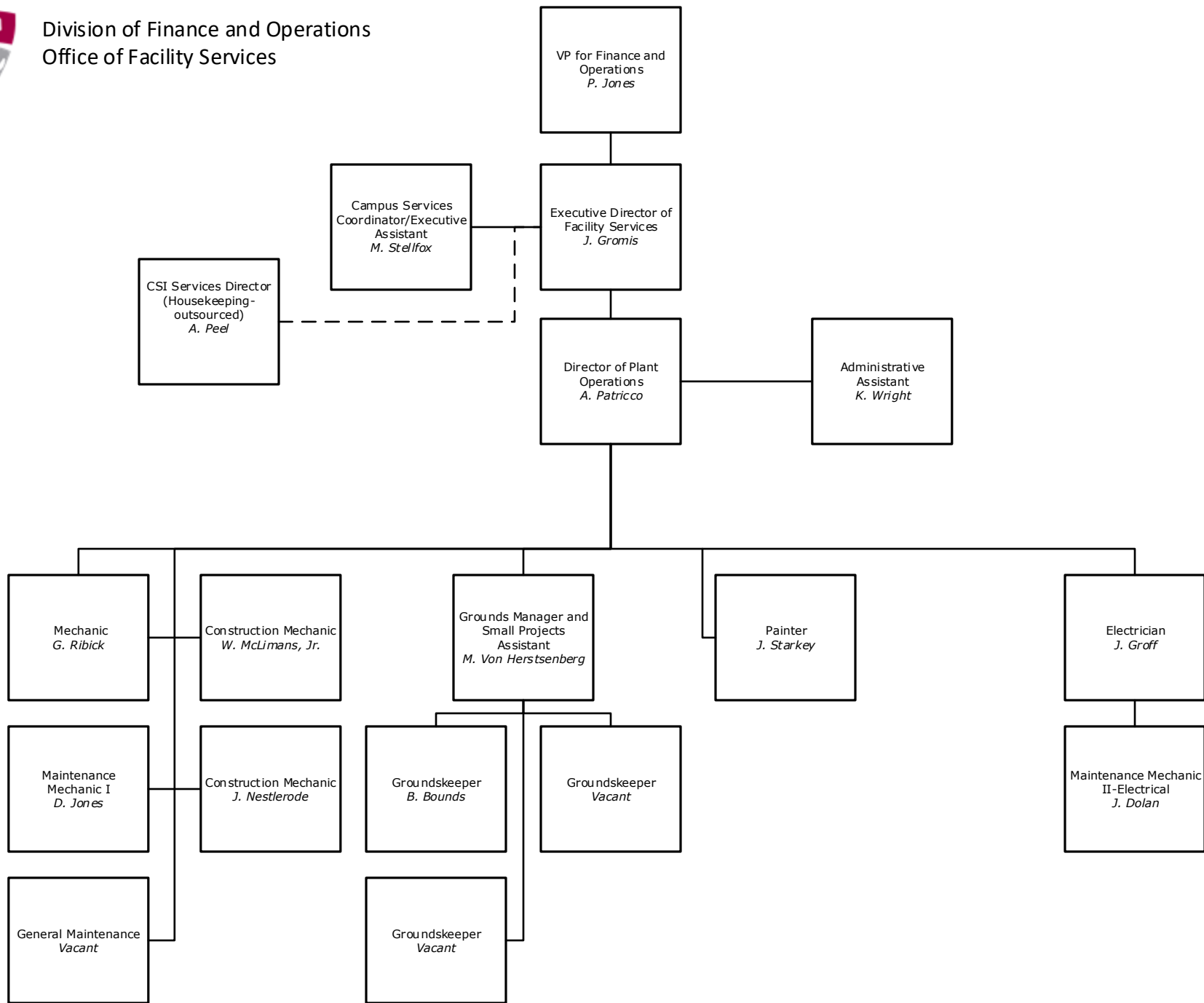


Division of Finance and Operations
Office of Finance and Operations



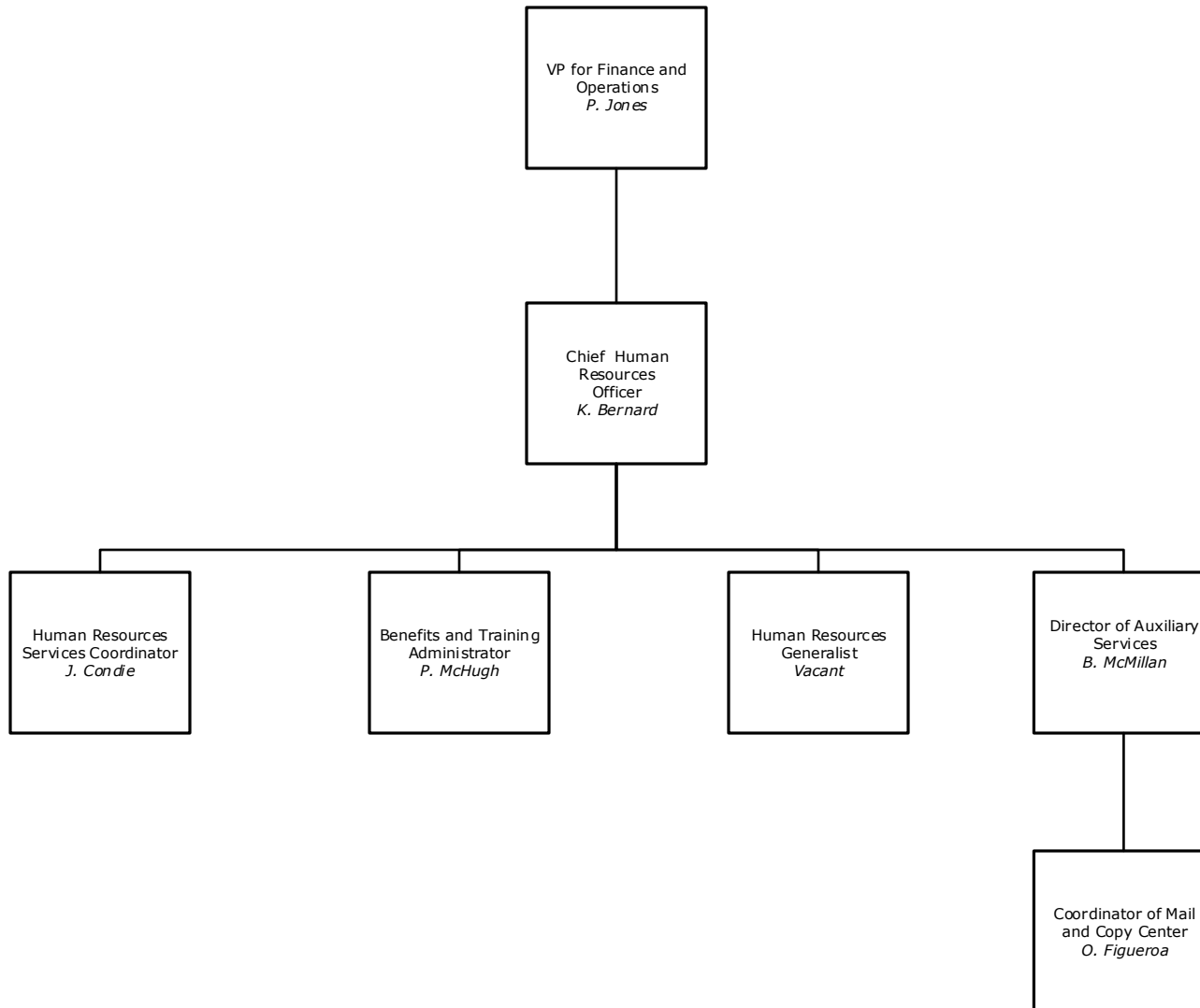


Division of Finance and Operations
Office of Facility Services

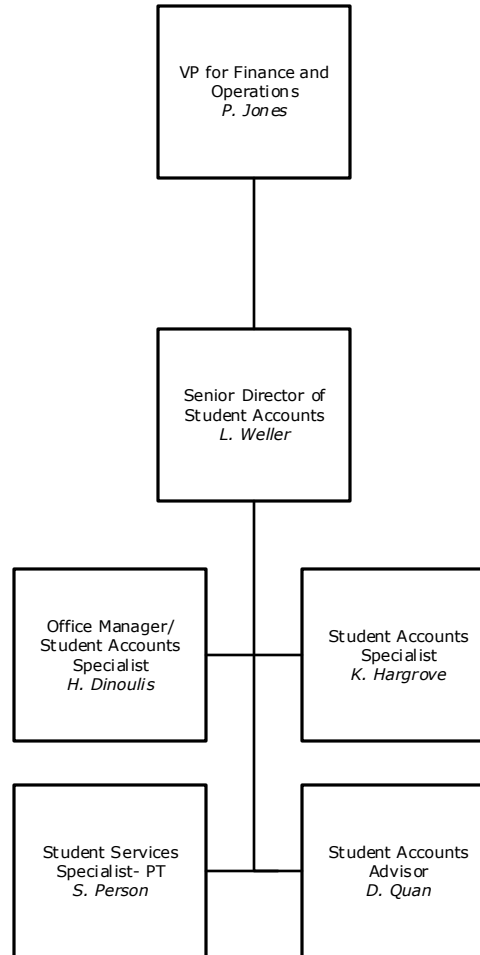




Division of Finance and Operations
Office of Human Resources



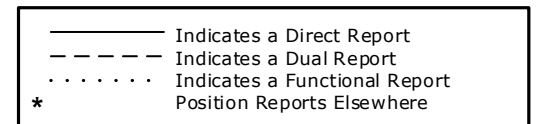
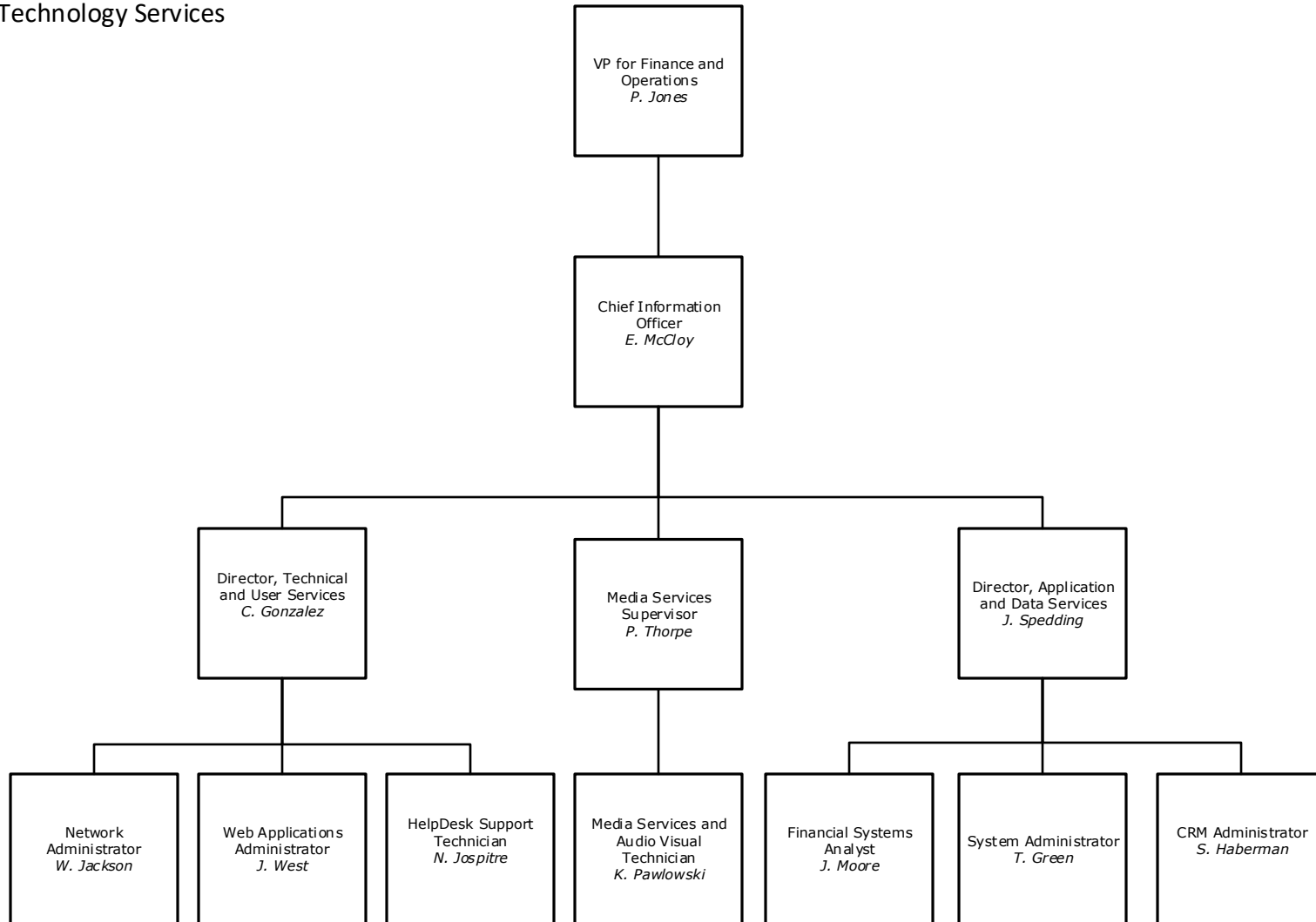
————— Indicates a Direct Report
- - - - - Indicates a Dual Report
· · · · · Indicates a Functional Report
* Position Reports Elsewhere



— Indicates a Direct Report
- - - Indicates a Dual Report
..... Indicates a Functional Report
* Position Reports Elsewhere

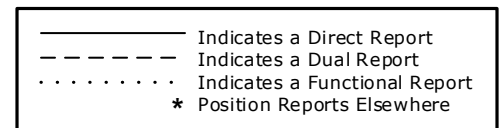
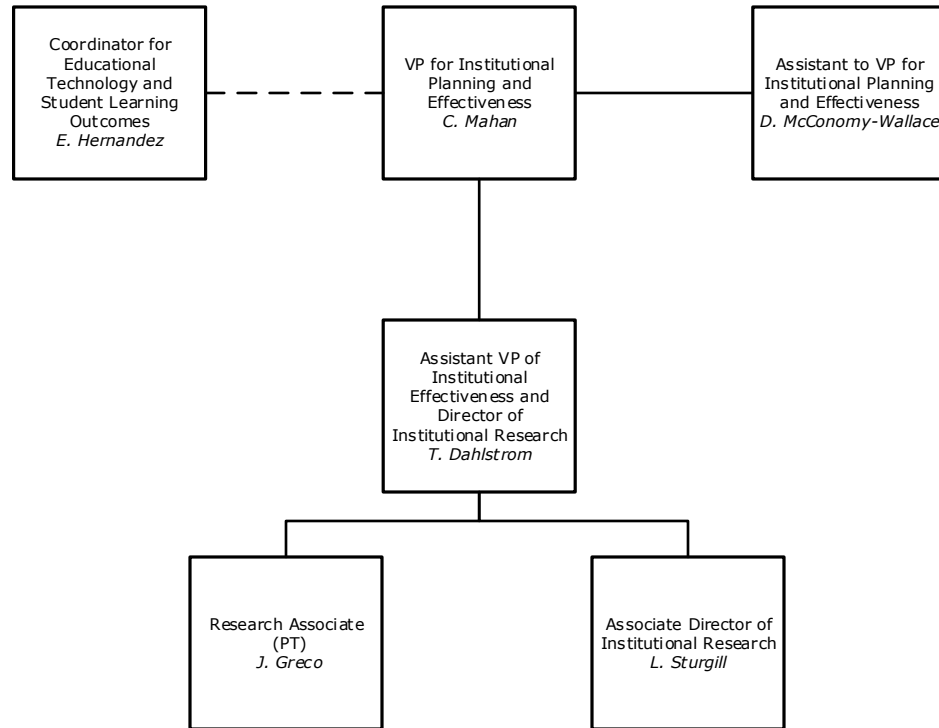


Division of Finance and Operations
Office of Technology Services





Division of Institutional Planning and Effectiveness
Office of the Vice President for Institutional Planning and Effectiveness





Any changes should be reported to the Office of Human Resources
kbernard@eastern.edu

Revised: January 31, 2020